

PARTS CATALOGUE CATALOGO DE REPUESTOS

AG200 (3GXG) PERU

1A3GX-200E1

YAMAHA
GENUINE
Parts & Accessories

2008/1/31

NEWS NO.	DATE	COMMENT
PE0-MC-070059	Nov.,21,2007	COR:FIG.15 SHIFT CAM & FORK ILLUSTRATION CORRECTIONS

AG200
PARTS CATALOGUE
©2002 by Yamaha Motor Co., Ltd.
1st Edition, Jan. 2002
All rights reserved.
Any reprinting or unauthorized use
without the written permission of
Yamaha Motor Co., Ltd.
is expressly prohibited.
Printed in Japan

AG200
CATALOGO DE REPUESTOS
©2002, Yamaha Motor Co., Ltd.
1ª edición, En. 2002
Reservados todos los derechos.
Se prohíbe expresamente toda reimpresión
o utilización no autorizada de este manual
sin el consentimiento por escrito de
Yamaha Motor Co., Ltd.
Impreso en Japón

FOREWORD

This Parts Catalogue is related to the parts for the model(s) in the below frame. When you are ordering replacement parts, please refer to this Parts Catalogue and quote both part numbers and part names correctly.

AG200(3GXG)

1. Modifications or additions which have been made after issue of the Parts Catalogue will be announced in the Yamaha Parts News.
It is advisable that you make necessary corrections to the Parts Catalogue according to the Yamaha Parts News.

2. Abbreviations
The Following abbreviations are used in this Parts Catalogue.

“UR” Use specified parts number.

“UN” Use as many as needed.

“AP” Alternate Parts

“LM” Local Made (Parts need to be ordered locally)

“F#” Frame No. (Applicable machine No.)

3. Parts, which are to be supplied in an assembly, are listed with a dot(.) in front of the part name as shown below.

EXAMPLE

CARBURETOR ASSY

.JET, PILOT

.NOZZLE, MAIN

4. Number of component for assembly
The numeral appearing to the right of each component part indicates the quantity of parts for each assembly unit.

EXAMPLE

PART NO.	DESCRIPTION	Q'TY	REMARKS
2F5-83310-60	FRONT FLASHER LIGHT ASSY	2	
115-83311-60	.BULB (6V-18W)	1	
1M1-83309-60	.REFLECTOR	1	

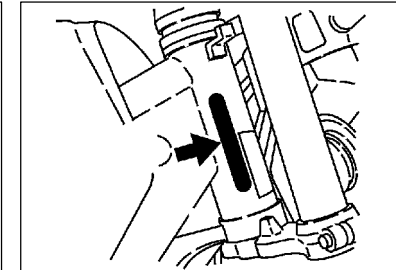
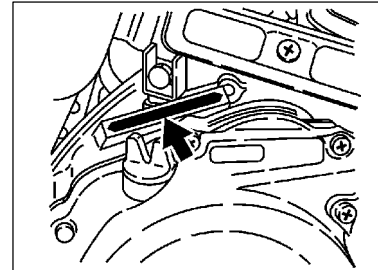
5. Applicable colors of graphics are represented in the “REMARKS” as shown below.

PART NO.	DESCRIPTION	Q'TY	REMARKS
2N4-24110-00-X5	FUEL TANK COMP.	1	MXR
3J1-24240-10	.GRAPHIC, FUEL TANK	1	FOR MXR

6. Applicable Serial No.

Engine Serial No.

Frame Serial No.



7. Note that the illustrations for reference in finding parts numbers, not to be used for assembling. When assembling, please use the applicable service manual.

8. The asterisk (*) before a reference number indicates modification items after the first edition.

PROLOGO

Este Catálogo de Repuestos corresponde a las piezas para el(los) modelo(s) del recuadro siguiente. Al formular el pedido de repuestos, se ruega citar este Catálogo de Repuestos y especificar correctamente los números de parte y los nombres de parte.

AG200(3GXG)

1. Las modificaciones y agregados que se hayan realizado después de la edición de este Catálogo de Repuestos, serán anunciados en las Informaciones de Recambios Yamaha.
2. Abreviaciones
En este Catálogo de Repuestos se emplean las siguientes abreviaciones.
 "UR" Usar el número de partes especificado
 "UN" Usar la cantidad necesaria
 "AP" Piezas sustitutivas
 "LM" Fabricación local (Partes necesarias que se pedirán localmente)
 "F#" No. de bastidor aplicable
3. Las piezas suministradas como conjunto se describen con un punto (.) que precede al nombre de la pieza como se indica a continuación.

EJEMPLO

CONJUNTO CARBURADOR

.INYECTOR, piloto

.BOQUILLA, principal

4. Cantidad de componentes de un conjunto
La numeración que aparece a la derecha de cada descripción, indica la cantidad de piezas por cada unidad de conjunto.

EJEMPLO

PIEZAS NO.	DESCRIPCION	CANT.	OBSERVACION
2F5-83310-60	ENSAMBLAJE DE LA LUZ	2	
115-83311-60	.BOMBILLA (6V-1 8W)	1	
1M1-83309-60	.REFLECTOR	1	

5. Los colores de los componentes se indican como sigue en la columna de "OBSERVACIONES".

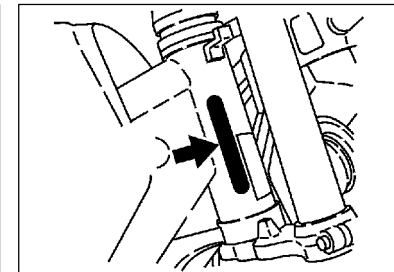
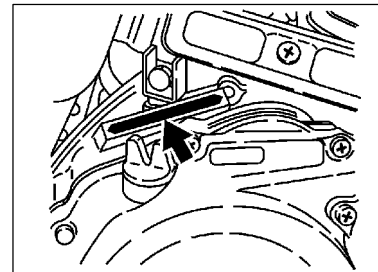
EJEMPLO

PIEZAS NO.	DESCRIPCION	CANT.	OBSERVACION
2N4-24110-00-X5	COMP. DEL TANQUE	1	MXR
3J1-24240-10	.GRAFICO, DEL TANQUE	1	PARA MXR

6. Números de Serie

No. de Serie del motor.

No. de Serie del bastidor

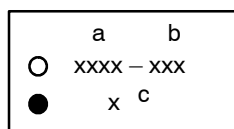


7. Debe tenerse en cuenta que las ilustraciones sirven como guía para la búsqueda de las referencias y no deben usarse para el montaje. Durante el montaje, se recomienda usar el manual de Taller correspondiente.
8. EL asterisco (*) antes del número de referencia indica los elementos modificados después de la primera edición.

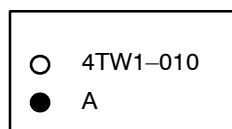
MODEL LABEL

(1) A label called "Model Label" is affixed in the location as indicated in (3) below.
 When using this parts catalogue, please be sure to cross-refer the "model code – production code No." in the catalogue to the "model code – production code No." "indicated on the Model Label affixed onto the product concerned.

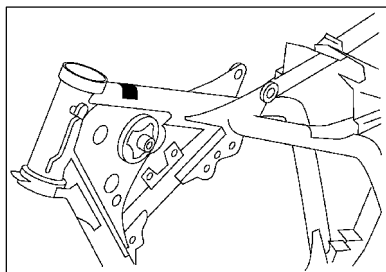
(2) "Model Label" Indication



a: Model Type Code
 b: Production Code No.
 c: Colouring Type



(3) Model Label Affixing Location



(4) Model Code – Production Code Number of Model Listed in This Parts Catalog

Model Code	Production Code No.	Country (destination)	Model Code	Production Code No.	Country (destination)
3GXG	010	PERU			

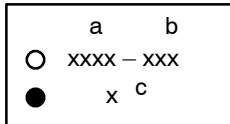
(5) Colouring Information

Model Code	Colouring type code	Colour code	Colour Name	Abbreviation
3GXG	A	0402	YELLOWISH GRAY SOLID 3	YNS3
	B	00J5	SPACE BLUE	SBE

ROTULO DE MODELO

(1) El rótulo llamada “Rótulo de Modelo” está en la ubicación indicada abajo en el (3). Cuando se utilice este catálogo de partes, se ruega cotejar entre el “código de modelo–número de código de producción” del catálogo y el “código de modelo–número de código de producción” indicado en el Rótulo de Modelo fijado en el producto correspondiente.

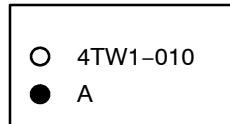
(2) Indicación del “Rótulo de Modelo”



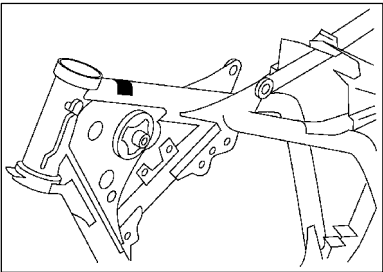
a: Código de tipo de Modelo

b: Número de código de Producción

c: Tipo de color



(3) Ubicación de fijación del Rótulo de Modelo



(4) Código de Modelo–Número de código de Producción del Modelo Listado en este Catálogo de Partes

Código de Modelo	Número de Código de Producción	Pais(destine)	Código de Modelo	Número de Código de Producción	Pais(destine)
3GXG	010	PERU			

(5) Información de Color

Código de Modelo	Código de tipo de color	Código de color	Nombre de color	Abreviatura
3GXG	A	0402	YELLOWISH GRAY SOLID 3	YNS3
	B	00J5	SPACE BLUE	SBE

CONTENTS

ENGINE

CYLINDER HEAD	1
CYLINDER	2
CRANKSHAFT. PISTON	3
VALVE	5
CAMSHAFT. CHAIN	6
OIL PUMP	7
INTAKE	8
CARBURETOR	9
EXHAUST	11
CRANKCASE	12
CRANKCASE COVER 1	13
STARTER	14
CLUTCH	16
TRANSMISSION	18
SHIFT CAM. FORK	19
SHIFT SHAFT	20

CHASSIS

FRAME	21
FENDER	22
SIDE COVER	23
REAR ARM	24
REAR SUSPENSION	26
STEERING	27
FRONT FORK	28
FUEL TANK	30
SEAT	31
FRONT WHEEL	32
REAR WHEEL	34
STEERING HANDLE. CABLE	36

STAND. FOOTREST	37
GENERATOR	38
FLASHER LIGHT	39
METER	40
HEADLIGHT	41
TAILLIGHT	42
HANDLE SWITCH. LEVER	43
ELECTRICAL 1	44

INDEX

NUMERICAL INDEX	46
-----------------------	----

CONTENIDO

MOTOR

CULATA DE CILINDRO	1
CILINDRO	2
CIGUENAL. PISTON	3
VALVULA	5
ARBOL DE LEV. CADENA	6
BOMBA DE ACEITE	7
ADMISION	8
CARBURADOR	9
DESCARGA	11
CARTER	12
CUBIERTA DE CARTER 1	13
ARRANQUE	14
EMBRAGUE	16
TRANSMISION	18
LEVA DE CAMBIO. HORQ	19
EJE DE CAMBIO. PEDAL	20

SHASIS

CUADRO	21
GUARDABARRO	22
CUBIERTA LATERAL	23
BRAZO TRASERO	24
SUSPENSION TRASERO	26
DIRECCION	27
HORQUILLA DELANTERA	28
DEPOSITO DE COMBUSTIBLE	30
ASIEN TO	31
RUEDA DELANTERA	32
RUEDA TRASERA	34
MANUBRIO. CABLE	36

SOPORTE. APOYAPIE	37
GENERADOR	38
LUZ DE DESTELLADOR	39
MEDIDOR	40
FARO DELANTERO	41
LUZ DE COLA	42
INTERRUPTOR DE MANIJA. PALANCA	43
EQUIPO ELECTRICO 1	44

INDICE

INDICE NUMERICO	46
-----------------------	----

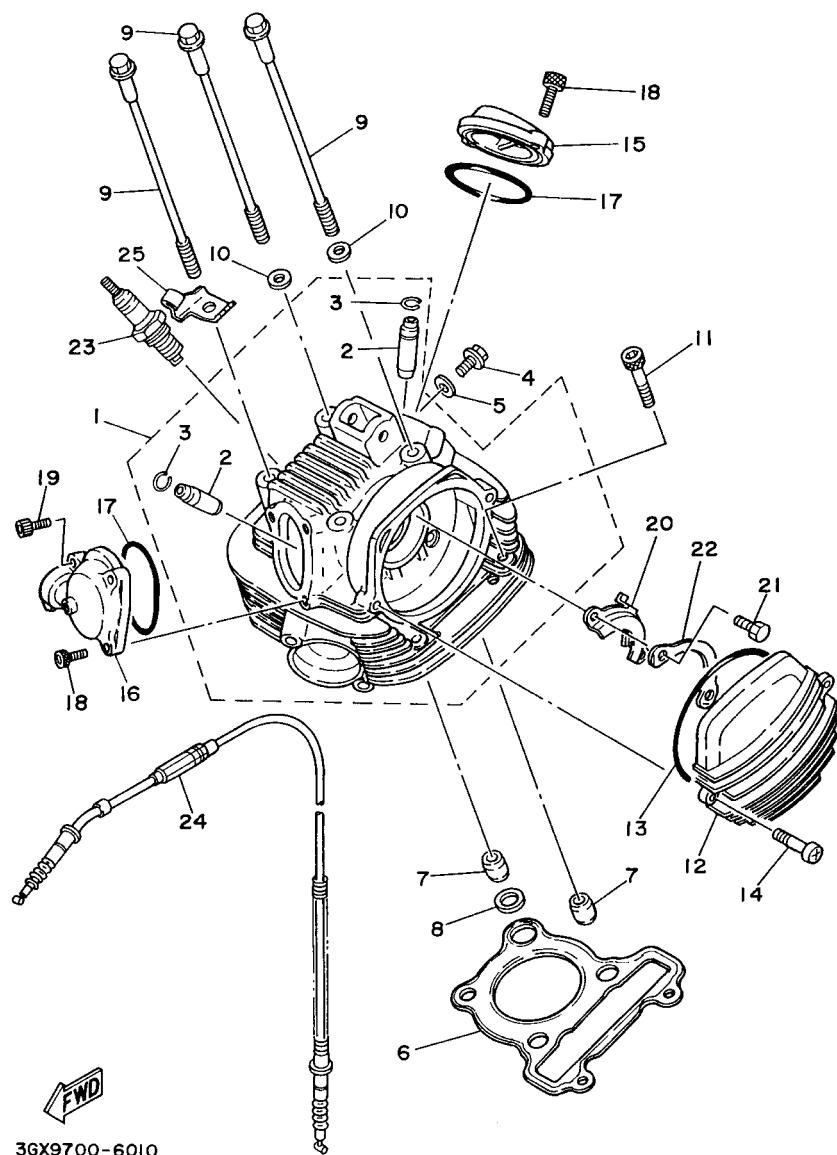


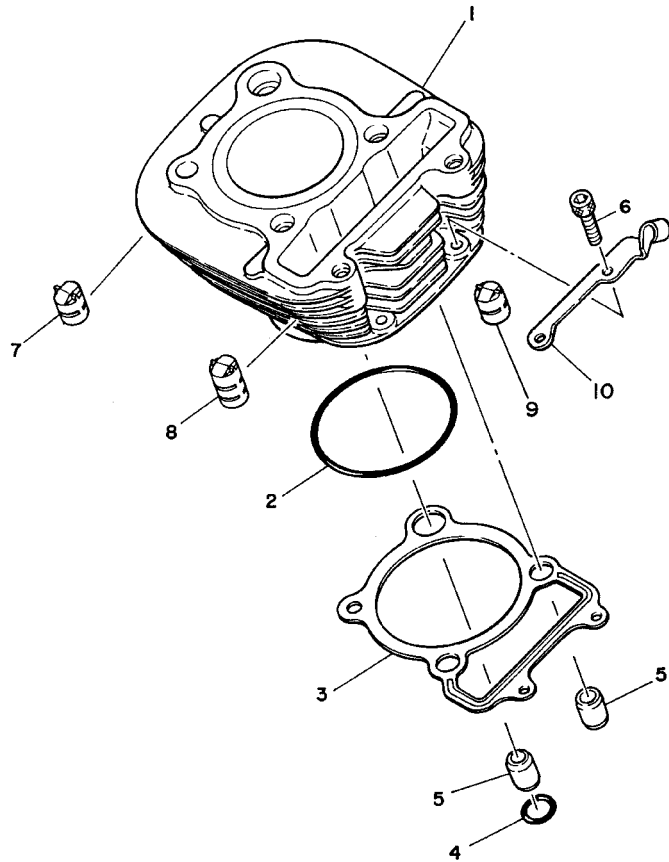
FIG. 1 CYLINDER HEAD

CULATA DE CILINDRO

REF. NO.	PART NO. CODIGO NO.	DESCRIPTION DESCRIPTION	3GXG				REMARKS OBSERVACION
1	36X-11102-03	CYLINDER HEAD ASSY CULATA DE CILINDRO COMPLETA	1				
2	5H0-11133-11	.GUIDE, INTAKE VALVE .GUIA VALV.DE ADM.	2				
3	93440-10085	.CIRCLIP .BOLA	2				
4	90153-06029	SCREW, HEXAGON TORNILLO HEXAGONAL	1				
5	90430-06014	GASKET JUNTA	1				
6	1NU-11181-00	GASKET, CYLINDER HEAD 1 JUNTA, DE CULATA 1	1				
7	99530-14016	PIN, DOWEL PASADOR, DE ESPIGA	3				
8	90430-14131	GASKET JUNTA	1				
9	90105-08195	BOLT, FLANGE TORNILLO	4				
10	90201-08609	WASHER, PLATE ARANDELA PLANA	3				
11	91317-08045	BOLT PERNO	2				
12	3RW-11185-00	COVER, CYLINDER HEAD SIDE 1 CUBIERTA CULATA CIL.LAT.1	1				
13	93211-05471	O-RING ANILLO O	1				
14	98507-06020	SCREW, PAN HEAD TORNILLO DE CABEZA CON PLANA	2				
15	5H0-11186-00	COVER, CYLINDER HEAD SIDE 2 CUBIERTA CULATA CIL.LAT.2	1				
16	36X-11187-00	COVER, CYLINDER HEAD SIDE 3 CUBIERTA CULATA CIL.LAT.3	1				
17	93210-57634	O-RING ANILLO O	2				
18	91317-06018	BOLT PERNO	4				
19	90110-06064	BOLT, HEXAGON SOCKET HEAD TORNILLO ALLEN	1				
20	5H0-1111F-00	PLATE PLACA	1				
21	97007-06012	BOLT PERNO	2				
22	90215-06184	WASHER, LOCK ARANDELA DE CIERRE	1				
23	94701-00157	PLUG, SPARK (NGK D8EA) BUJIA	1				UR
	94701-00181	PLUG, SPARK (ND X24ES-U) BUJIA	1				UR
24	36X-12292-00	CABLE, DECOMPRESSION CABLE DE DESCOMPRESION	1				
25	36X-12283-00	BRACKET, DECOMPRESSION SOPORTE DE DESCOMPRESION	1				

FIG. 2 CYLINDER

CILINDRO



REF. NO.	PART NO. CODIGO NO.	DESCRIPTION DESCRIPTION	3GXG				REMARKS OBSERVACION
1	36X-11310-00	CYLINDER CILINDRO	1				
2	93210-72529	O-RING ANILLO O	1				
3	5LB-11351-00	GASKET, CYLINDER JUNTA, DE CILINDRO	1				
4	93210-13361	O-RING ANILLO O	1				
5	99530-14016	PIN, DOWEL PASADOR, DE ESPIGA	2				
6	91317-06030	BOLT PERNO	2				
7	15A-11162-00	ABSORBER 2 AMORTIGUADOR 2	2				
8	5H0-11162-00	ABSORBER 2 AMORTIGUADOR 2	2				
9	15A-11161-01	ABSORBER 1 AMORTIGUADOR 1	1				
10	36X-15441-00	HOLDER, CLUTCH CABLE SOSTEN, DE CABLE DE EMBRAGUE	1				



36X700-3020

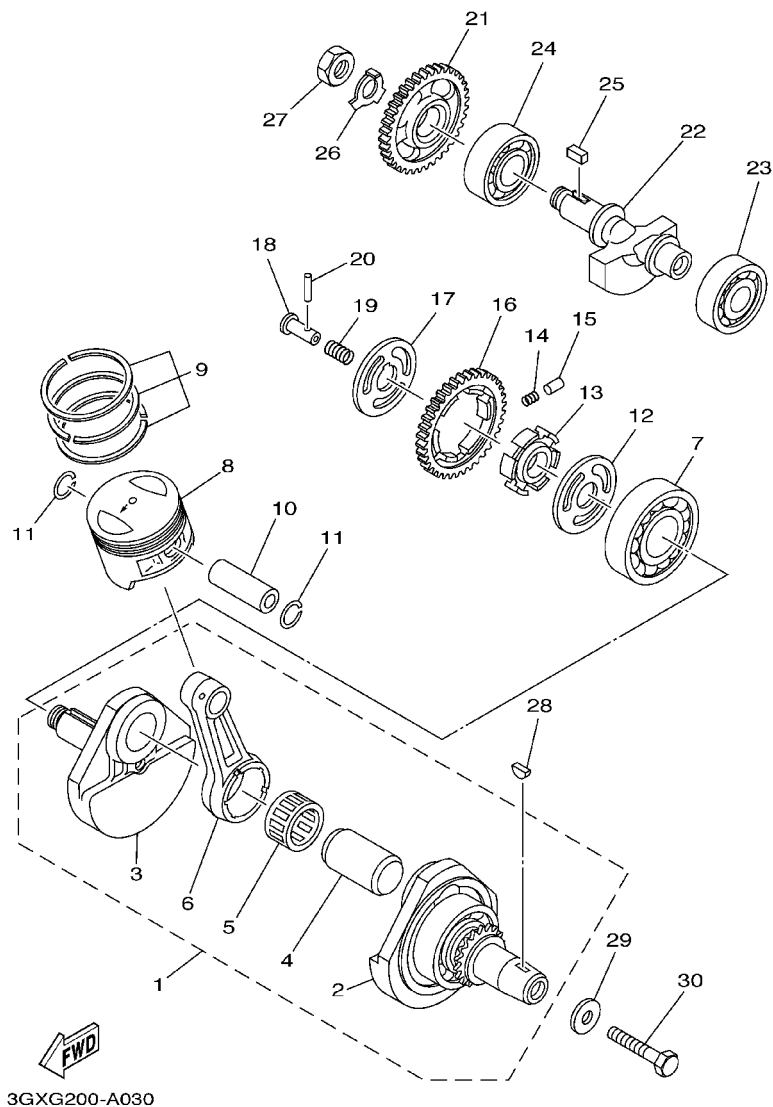
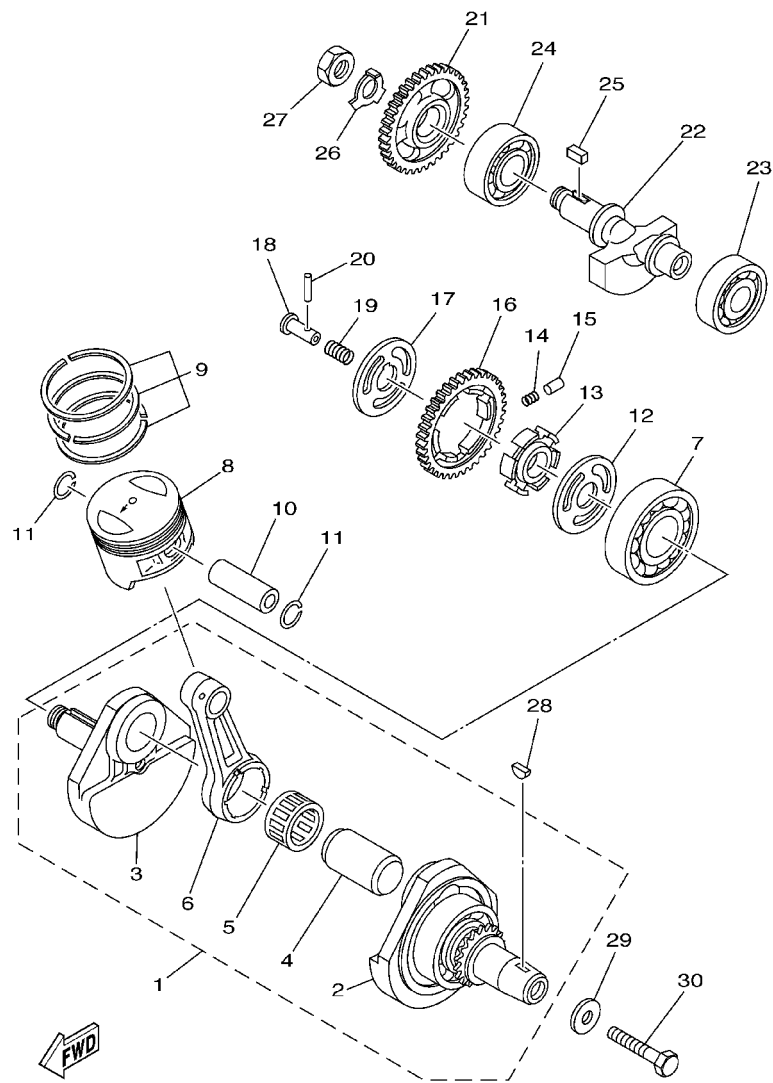


FIG. 3 CRANKSHAFT. PISTON CIGUENAL. PISTON

REF. NO.	PART NO. CODIGO NO.	DESCRIPTION DESCRIPTION	3GXG				REMARKS OBSERVACION
1	15A-11400-00	CRANKSHAFT ASSY CIGUENAL COMPLETO	1				
2	15A-11412-09	.CRANK 1 .MANIVELA 1	1				
3	5H0-11422-00	.CRANK 2 .MANIVELA 2	1				
4	5H0-11681-00	.PIN, CRANK 1 .PASADOR MANIVELA 1	1				
5	93310-530J3	.BEARING .COJINETE	1				
6	15A-11651-00	.ROD, CONNECTING .BIELA	1				
7	93306-30611	BEARING COJINETE	1				
8	36X-11631-00-A0	PISTON (STD) PISTON (STD)	1				
	36X-11636-00	PISTON (0.50MM O/S) PISTON (0.50MM O/S)	1				AP
	36X-11638-00	PISTON (1.00MM O/S) PISTON (1.00MM O/S)	1				AP
9	15A-11603-00	PISTON RING SET (STD) JUEGO DE ANILLOS (STD)	1				
	15A-11605-00	PISTON RING SET (0.50MM O/S) JUEGO DE ANILLOS (0.50MM O/S)	1				AP
	15A-11607-00	PISTON RING SET (1.00MM O/S) JUEGO DE ANILLOS (1.00MM O/S)	1				AP
10	15A-11633-00	PIN, PISTON PASADOR, PISTON	1				
11	93450-17044	CIRCLIP BOLA	2				
12	90201-201E4	WASHER, PLATE ARANDELA PLANA	1				
13	5H0-11496-00	BOSS, BUFFER COPA TOPE	1				
14	90501-21133	SPRING, COMPRESSION RESORTE DE COMPRESION	6				
15	93605-10090	PIN, DOWEL PASADOR DE CLAVIJA	3				
16	5H0-11536-00	GEAR, DRIVE (38T) ENGRANAJE TRACCION (38T)	1				
17	90214-20023	WASHER, CLAW ARANDELA DE POSICION	1				
18	90240-07083	PIN, CLEVIS PASADOR CON HOYO	1				
19	90501-07629	SPRING, COMPRESSION RESORTE DE COMPRESION	1				
20	93602-13177	PIN, DOWEL PASADOR DE CLAVIJA	1				
21	5H0-11531-00	GEAR, BALANCE WEIGHT (38T) ENGRANAJE CONTRAPESO (38T)	1				
22	15A-11454-00	WEIGHT 1 PESO 1	1				
23	93306-30427	BEARING COJINETE	1				



3GXG200-A030



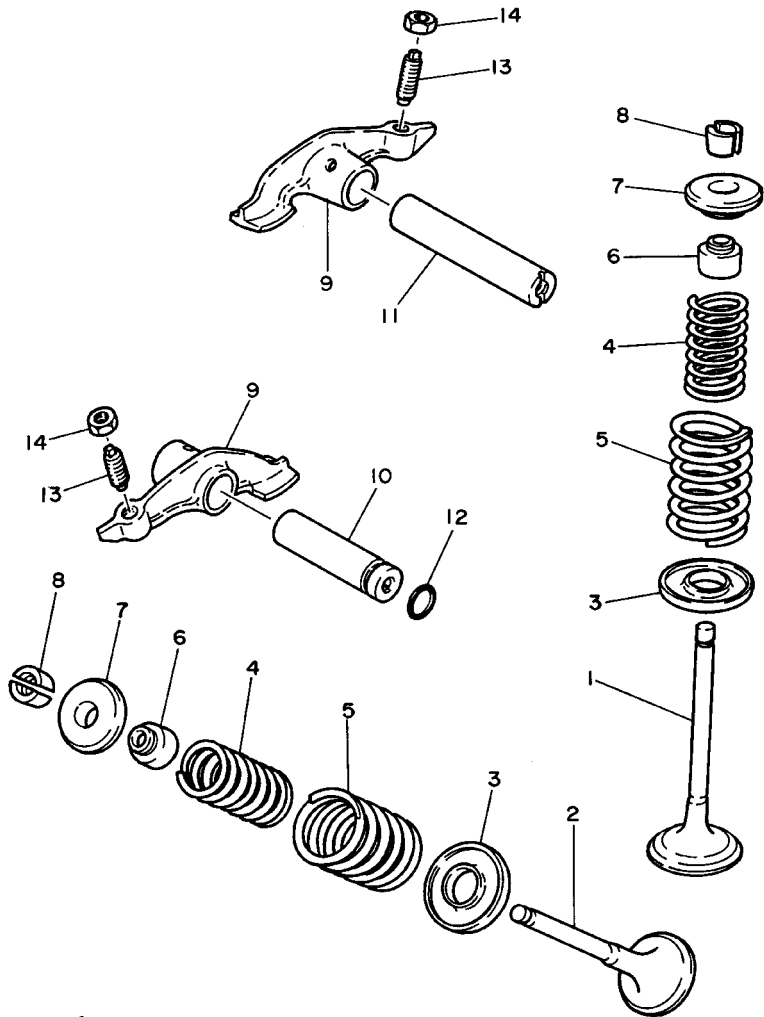
FIG. 3 CRANKSHAFT. PISTON

CIGUENAL. PISTON

REF. NO.	PART NO. CODIGO NO.	DESCRIPTION DESCRIPTION	3GXG				REMARKS OBSERVACION
24	93306-30427	BEARING COJINETE	1				
25	90282-05013	KEY, STRAIGHT CHAVETA, RECTA	1				
26	90215-14205	WASHER, LOCK ARANDELA DE CIERRE	1				
27	90170-14284	NUT TUERCA	1				
28	90280-05013	KEY, WOODRUFF CUNA WOODRUFF	1				
29	90201-10508	WASHER, PLATE ARANDELA PLANA	1				
30	90101-10188	BOLT TORNILLO	1				

FIG. 4 VALVE

VALVULA



REF. NO.	PART NO. CODIGO NO.	DESCRIPTION DESCRIPTION	3GXG				REMARKS OBSERVACION
1	5H0-12111-01	VALVE, INTAKE VALVULA DE ADMISION	1				
2	5H0-12121-01	VALVE, EXHAUST VALVULA DE ESCAPE	1				
3	4G0-12116-01	SEAT, VALVE SPRING ASIENTO RESORTE DE VALVULA	2				
4	4G0-12113-01	SPRING, VALVE INNER RESORTE VALVULA INTERNA	2				YELLOW
5	4G0-12114-01	SPRING, VALVE OUTER RESORTE VALVULA EXTERIOR	2				YELLOW
6	5H0-12119-00	SEAL, VALVE STEM SELLO DE ACEITE VALVULA	2				
7	4G0-12117-00	RETAINER, VALVE SPRING RETEN RESORTE DE VALVULA	2				
8	4G0-12118-00	COTTER, VALVE SEGURO DE VALVULA	4				
9	36X-12151-00	ARM, VALVE ROCKER BRAZO DE BALANCIN DE VALVULA	2				
10	5H0-12156-00	SHAFT, ROCKER 2 EJE DE BALANCIN 2	1				
11	5H0-12146-00	SHAFT, ROCKER ARBOL DE BALANCIN	1				
12	93210-09165	O-RING ANILLO O	1				
13	2NX-12159-00	SCREW, VALVE ADJUSTING TORNILLO DE AJUSTE DE VALVULA	2				
14	90170-06128	NUT TUERCA	2				

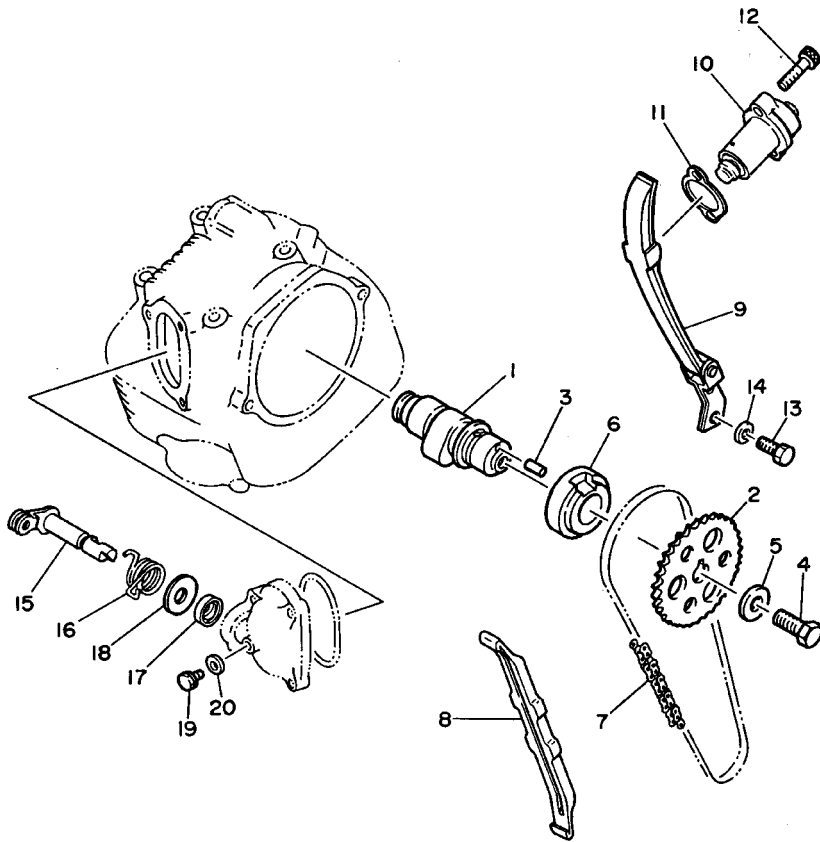


36X700-3040

FIG. 5 CAMSHAFT. CHAIN

ARBOL DE LEV. CADENA

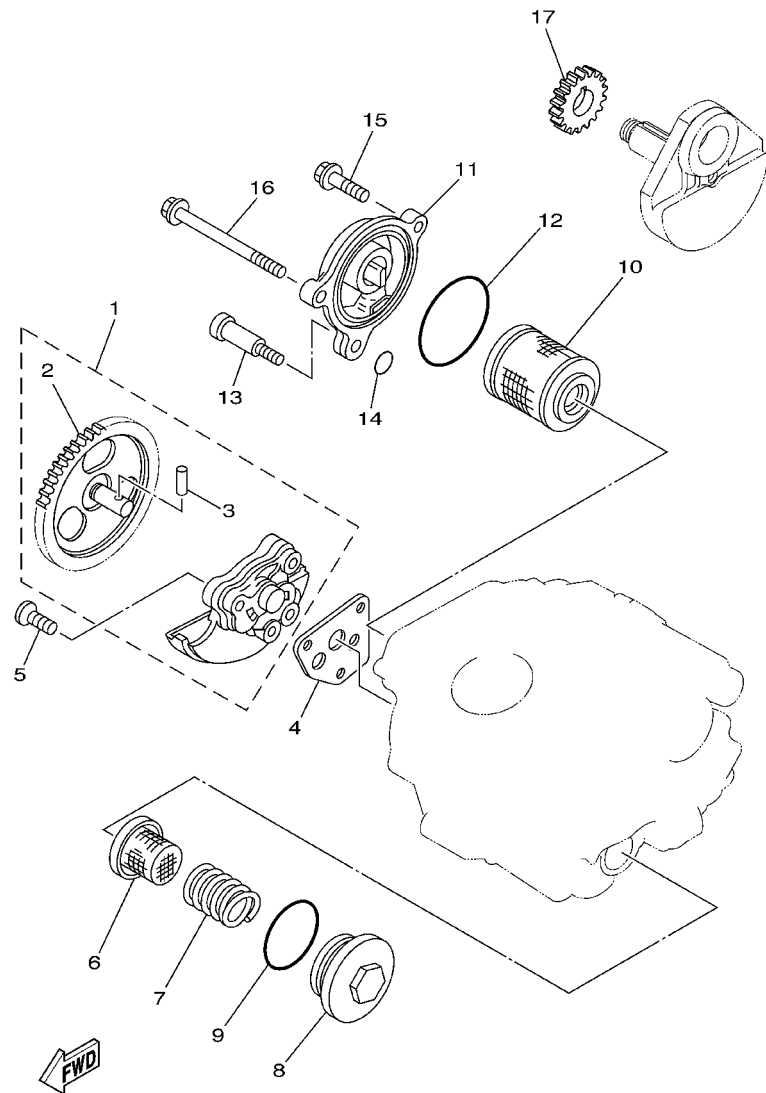
REF. NO.	PART NO. CODIGO NO.	DESCRIPTION DESCRIPTION	3GXG				REMARKS OBSERVACION
1	36X-12171-00	CAMSHAFT 1 ARBOL DE LEVAS 1	1				
2	5H0-12176-00	SPROCKET, CAM CHAIN (40T) CATALINA DE CADENA (40T)	1				
3	93604-10011	PIN, DOWEL PASADOR DE CLAVIJA	1				
4	90101-10303	BOLT TORNILLO	1				
5	90201-10591	WASHER, PLATE ARANDELA PLANA	1				
6	90387-255F3	COLLAR COLLAR	1				
7	94580-41104	CHAIN CADENA	1				
8	5H0-12231-00	GUIDE, STOPPER 1 TOPE DE GUIA 1	1				
9	5N0-12241-00	GUIDE, STOPPER 2 TOPE DE GUIA 2	1				
10	3GC-12210-10	TENSIONER ASSY, CAM CHAIN TENSOR CADENA DE LEVA	1				
11	4FM-12213-00	GASKET, TENSIONER CASE EMPAQUE DE CAJA TENSOR	1				
12	91317-06025	BOLT PERNO	2				
13	97027-06016	BOLT PERNO	2				
14	92907-06600	WASHER, PLATE ARANDELA	2				
15	36X-12288-00	CAM, DECOMPRESSION LEVA DE DESCOMPRESION	1				
16	90508-16428	SPRING, TORSION RESORTE DE TORSION	1				
17	93102-12106	OIL SEAL (SD 12-22-5 HS) SELLO ACEITE (SD 12-22-5 HS)	1				
18	90201-12588	WASHER, PLATE ARANDELA PLANA	1				
19	90109-06418	BOLT PERNO	1				
20	90430-06014	GASKET JUNTA	1				



3GX700-8050

FIG. 6 OIL PUMP

BOMBA DE ACEITE



3GXG200-A060

REF. NO.	PART NO. CODIGO NO.	DESCRIPTION DESCRIPTION	3GXG				REMARKS OBSERVACION
1	5H0-13300-02	OIL PUMP ASSY BOMBA DE ACEITE COMPLETA	1				
2	5H0-13326-01	.GEAR, PUMP DRIVEN 2 (45T) .ENGRANAJE IMPULSOR DE BOMBA (45T)	1				
3	93603-12030	.PIN, DOWEL .PASADOR DE CLAVIJA	1				
4	4BE-13329-01	GASKET, PUMP COVER EMPAQUE TAPA DE BOMBA	1				
5	98707-06030	SCREW, FLAT HEAD TORNILLO DE CABEZA PLANA	3				
6	51Y-13411-00	STRAINER, OIL FILTRO DE ACEITE	1				
7	90501-18576	SPRING, COMPRESSION RESORTE DE COMPRESION	1				
8	5H0-15351-00	PLUG, DRAIN TAPON DE DRENAJE	1				
9	93210-347A1	O-RING ANILLO O	1				
10	5H0-13440-00	ELEMENT ASSY, OIL CLEANER ELEMENTO FILTRO DE ACEITE	1				
11	3GX-13447-00	COVER, OIL ELEMENT TAPA DEL ELEMENTO	1				
12	93210-54175	O-RING ANILLO O	1				
13	90109-06419	BOLT PERNO	1				
14	93210-07135	O-RING ANILLO O	1				
15	95027-06025	BOLT, FLANGE PERNO, DE BRIDA	1				
16	90105-065A1	BOLT, FLANGE TORNILLO	1				
17	36X-13324-00	GEAR, PUMP DRIVE ENGRANAJE TRACC. DE BOMBA	1				

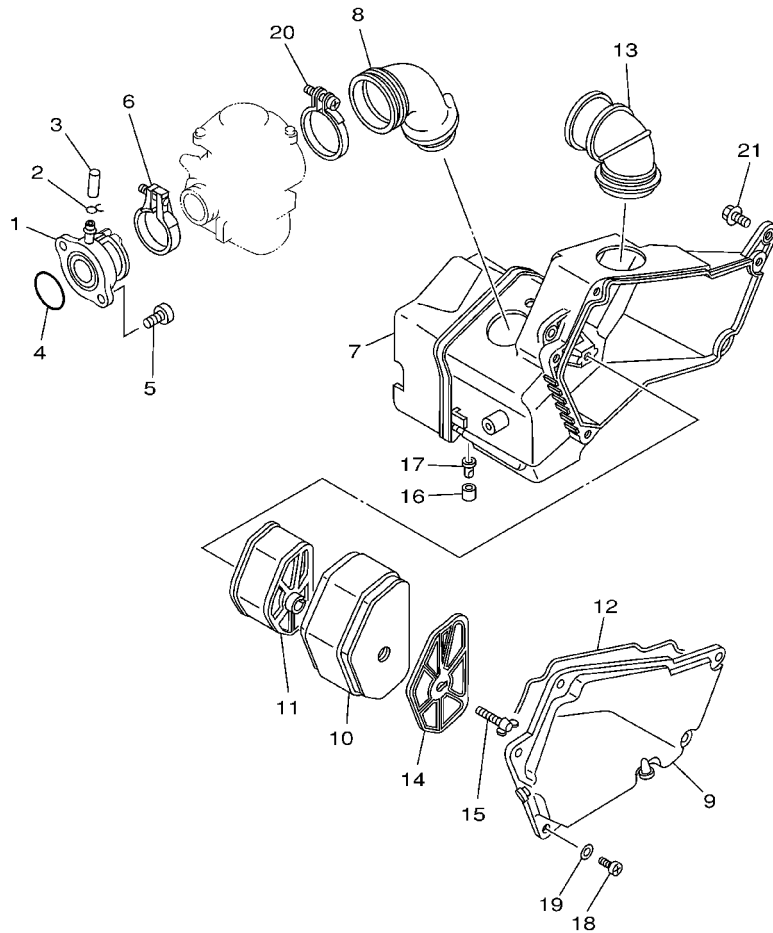


FIG. 7 INTAKE

ADMISION

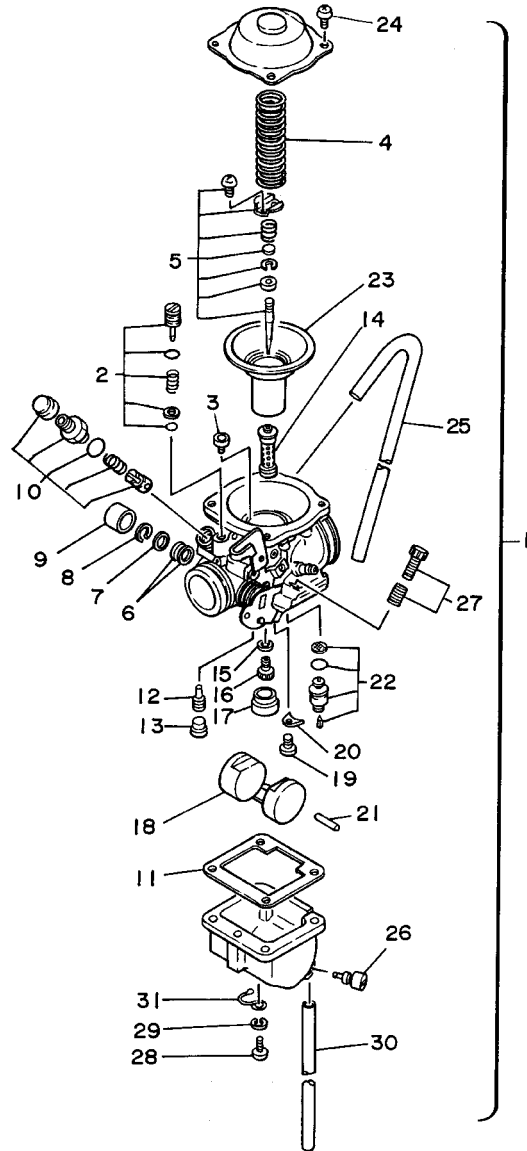
REF. NO.	PART NO. CODIGO NO.	DESCRIPTION DESCRIPTION	3GXB				REMARKS OBSERVACION
1	36X-13586-01	JOINT, CARBURETOR 1 TOBERA DE CARBURADOR 1	1				
2	90467-10035	CLIP PRESILLA	1				
3	16G-13569-00	PLUG, BLIND TAPON CIEGO	1				
4	93210-35537	O-RING ANILLO O	1				
5	91317-06020	BOLT PERNO	2				
6	1HX-13575-00	BAND BANDA	1				
7	36X-14401-00	AIR CLEANER CASE ASSY CAJA DE FILTRO DE AIRE COMPL.	1				
8	36X-14453-01	JOINT, AIR CLEANER 1 UNION DEL FILTRO DEL AIRE 1	1				
9	36X-14412-00	CAP, CLEANER CASE 1 TAPA CAJA DEL FILTRO 1	1				
10	36X-14451-00	ELEMENT, AIR CLEANER ELEMENTO DEL FILTRO DEL AIRE	1				
11	36X-14458-00	GUIDE GUIA	1				
12	36X-14452-00	SEAL SELLO	1				
13	36X-14437-00	DUCT CONDUCTO	1				
14	36X-14468-00	PLATE, ELEMENT FITTING PLACA ACCESORIO DE ELEMENTO	1				
15	90122-06012	BOLT, WING PERNO MARIPOSA	1				
16	90387-051K7	COLLAR COLLAR	1				
17	24W-13512-00	VALVE, ROTARY VALVULA ROTATORIA	1				
18	98507-05016	SCREW, PAN HEAD TORNILLO DE CABEZA CON PLANA	5				
19	92907-05600	WASHER, PLATE ARANDELA	5				
20	90460-56105	CLAMP, HOSE BRIDA, DE UNION	1				
21	95807-06016	BOLT, FLANGE TUERCA DE REBORDE	2				



3GXB200-7070

FIG. 8 CARBURETOR

CARBURADOR



REF. NO.	PART NO. CODIGO NO.	DESCRIPTION DESCRIPTION	3GXG				REMARKS OBSERVACION
1	36X-14901-01	CARBURETOR ASSY 1 CARBURADOR COMPLETO 1	1				
2	36X-14105-00	.PILOT SCREW SET .TORNILLO DE PILOTO	1				
3	3G2-14231-25	.JET, MAIN (#125) .INYECTOR, PRINCIPAL (#125)	1				
4	36X-14933-01	.SPRING, DIAPHRAGM .RESORTE DE DIAFRAGMA	1				
5	36X-1490J-00	.NEEDLE SET .CJTO. AGUJA	1				
6	256-14997-00	.SEAL .SELLO	2				
7	22F-14126-00	.GASKET .EMPAQUE	1				
8	812-14137-00	.CLIP .PRESILLA	1				
9	36X-14169-00	.CAP .FUNDA	1				
10	36X-1410A-00	.STARTER SET .JUEGO DE ARRANQUE	1				
11	46X-14984-00	.GASKET, FLOAT CHAMBER .EMPAQUE CAMARA DE BOIA	1				
12	4G0-14142-35	.JET, PILOT (# 35) .SURTIDOR DE RALENTI (# 35)	1				
13	3F7-14991-00	.SCREW .TORNILLO	1				
14	36X-14941-42	.NOZZLE, MAIN .BOQUILLA PRINCIPAL	1				
15	137-14153-00	.WASHER, MAIN JET .ARANDELA SURTIDOR PPAL.	1				
16	620-14231-74	.JET, MAIN (#117.5) .INYECTOR, PRINCIPAL (#117.5)	1				
17	36X-14153-00	.WASHER, MAIN JET .ARANDELA SURTIDOR PPAL.	1				
18	4G0-14985-00	.FLOAT .BOIA	1				
19	97802-04006	.SCREW, PAN HEAD .TORNILLO DE CABEZA CON PLANA	1				
20	36X-14146-00	.PLATE .PLACA SOPORTE	1				
21	537-14186-00	.PIN, FLOAT .PASADOR DE LA BOYA	1				
22	25G-14107-20	.NEEDLE VALVE SET .VALVULA DE AGUJA	1				
23	36X-14940-00	.DIAPHRAGM ASSY .DIAFRAGMA COMPLETO	1				
24	97802-05008	.SCREW, PAN HEAD .TORNILLO DE CABEZA CON PLANA	4				
25	36X-14197-00	.PIPE .TUBO RESPIRADERO	1				
26	36X-14191-00	.PLUG, DRAIN .TORNILLO, DE DRENAJE	1				
27	36X-1490K-00	.STOP SCREW SET .JUEGO DE TORNILLOS DE TOPE	1				


36X700-3080

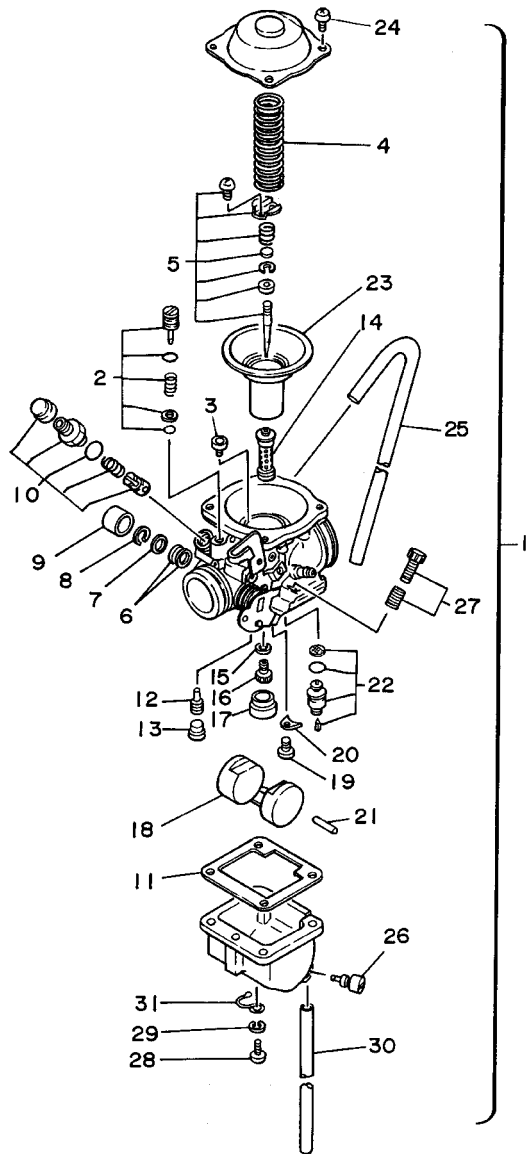


FIG. 8 CARBURETOR

CARBURADOR

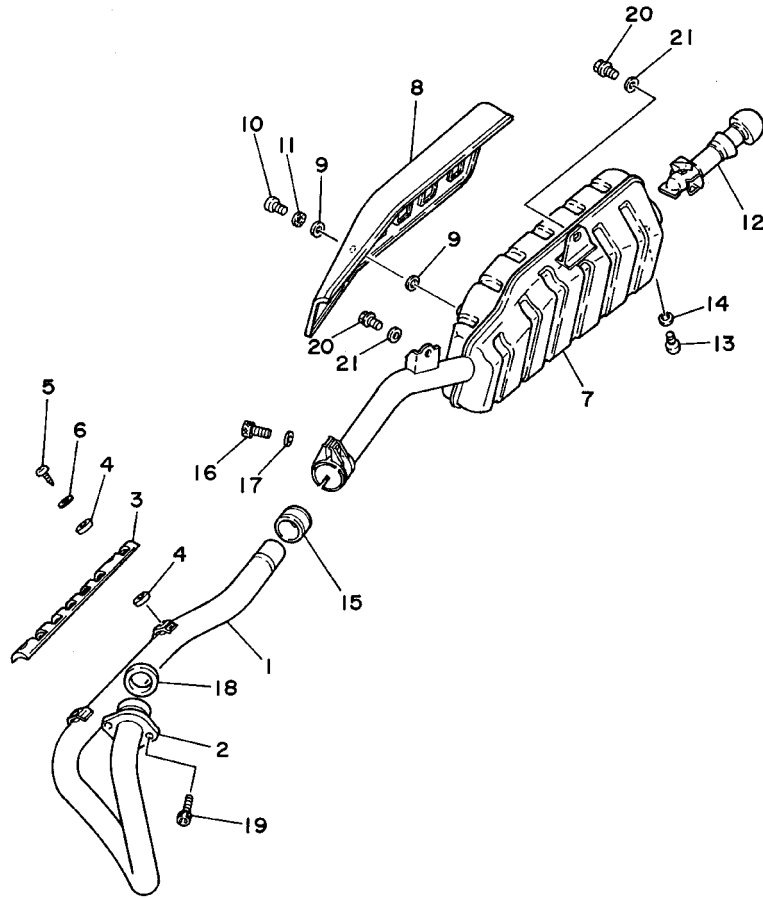
REF. NO.	PART NO. CODIGO NO.	DESCRIPTION DESCRIPTION	3GXG			REMARKS OBSERVACION
28	98502-04014	.SCREW, PAN HEAD .TORNILLO DE CABEZA CON PLANA	4			
29	92902-04100	.WASHER, SPRING .ARANDELA	4			
30	21V-14196-00	.PIPE .TUBO DE DRENASE	1			
31	25G-14937-00	.CLIP .PRESILLA	1			



36X700-3080

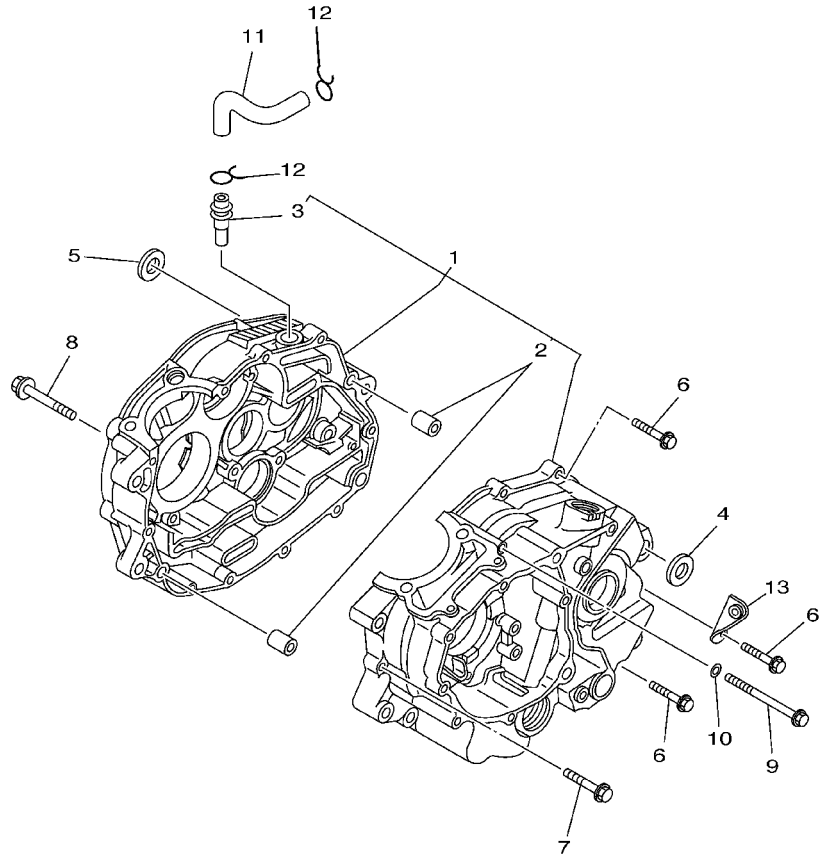
FIG. 9 EXHAUST

DESCARGA



3GX700-8090

REF. NO.	PART NO. CODIGO NO.	DESCRIPTION DESCRIPTION	3GXG				REMARKS OBSERVACION
1	36X-14611-01	PIPE, EXHAUST 1 TUBO DE ESCAPE 1	1				
2	5H0-14612-01	NUT, RING TUERCA ANILLO	1				
3	36X-14628-01	PROTECTOR, EXHAUST PIPE PROTECTOR DE TUBO DE ESCAPE	1				
4	4BD-14766-00	WASHER, PROTECTOR ARANDELA DE PROTECTOR	4				
5	98907-06010	SCREW, BIND TORNILLO DE LIGAR	2				
6	90206-06090	WASHER, WAVE ARANDELA ONDULADA	2				
7	36X-14711-01	MUFFLER 1 SILENCIADOR 1	1				
8	36X-14728-00	PROTECTOR, MUFFLER 2 PROTECTOR DE SILENCIADOR 2	1				
9	4BD-14766-00	WASHER, PROTECTOR ARANDELA DE PROTECTOR	4				
10	98907-06010	SCREW, BIND TORNILLO DE LIGAR	2				
11	90206-06090	WASHER, WAVE ARANDELA ONDULADA	2				
12	36X-14752-02	PIPE, OUTLET TUBO BOCA DE SALIDA	1				
13	98507-06010	SCREW, PAN HEAD TORNILLO DE CABEZA CON PLANA	1				
14	92907-06600	WASHER, PLATE ARANDELA	1				
15	3YF-14714-00	GASKET, MUFFLER EMPAQUE DE SILENCIADOR	1				
16	91317-08025	BOLT PERNO	1				
17	92907-08600	WASHER, PLATE ARANDELA	1				
18	4BE-14613-00	GASKET, EXHAUST PIPE JUNTA, TUBO DE ESCAPE	1				
19	91317-06020	BOLT PERNO	2				
20	90105-08141	BOLT, FLANGE TORNILLO	2				
21	90201-08326	WASHER, PLATE ARANDELA PLANA	2				



3GXX200-A100

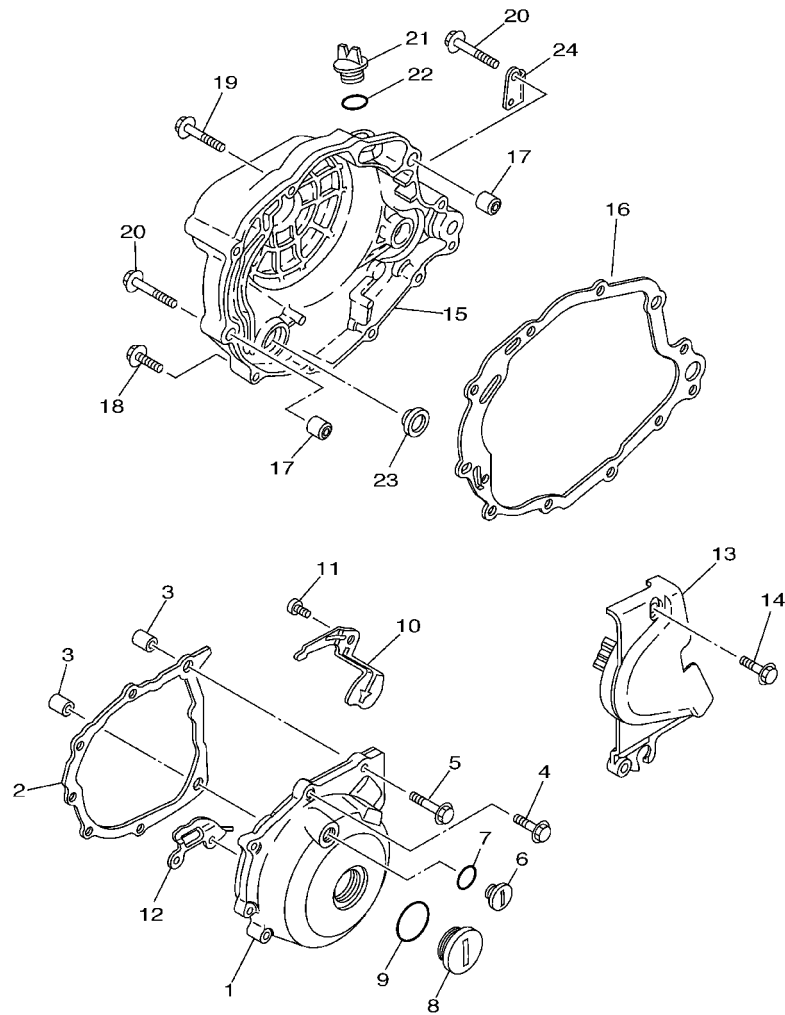
FIG. 10 CRANKCASE

CARTER

REF. NO.	PART NO. CODIGO NO.	DESCRIPTION DESCRIPTION	3GXX				REMARKS OBSERVACION
1	36X-15100-03	CRANKCASE ASSY CARTER COMPLETO	1				
2	99530-12016	.PIN, DOWEL .PASADOR, DE ESPIGA	2				
3	371-11167-01	.PIPE, BREATHER 2 .CUBIERTA RESPIRADERO 2	1				
4	90387-125F1	COLLAR COLLAR	1				
5	90387-125F1	COLLAR COLLAR	1				
6	95027-06030	BOLT, FLANGE PERNO, DE BRIDA	7				
7	95027-06040	BOLT, FLANGE PERNO, DE BRIDA	2				
8	95027-06080	BOLT, FLANGE PERNO, DE BRIDA	2				
9	95027-06085	BOLT, FLANGE PERNO, DE BRIDA	1				
10	90430-06014	GASKET JUNTA	1				
11	36X-11166-00	PIPE, BREATHER 1 TUBO RESPIRADERO 1	1				
12	90467-14015	CLIP PRESILLA	2				
13	90465-08020	CLAMP BRIDA	1				

FIG. 11 CRANKCASE COVER 1

CUBIERTA DE CARTER 1



FWD
3GXG200-A110

REF. NO.	PART NO. CODIGO NO.	DESCRIPTION DESCRIPTION	3GXG				REMARKS OBSERVACION
1	36X-15411-00	COVER, CRANKCASE 1 CUBIERTA DE CARTER 1	1				
2	15A-15451-02	GASKET, CRANKCASE COVER 1 EMPAQ DE CUBIERTA DE CARTER 1	1				
3	99530-12016	PIN, DOWEL PASADOR, DE ESPIGA	2				
4	95027-06025	BOLT, FLANGE PERNO, DE BRIDA	2				
5	95027-06035	BOLT, FLANGE PERNO, DE BRIDA	2				
6	90340-14068	PLUG, STRAIGHT SCREW TORNILLO, DE DRENAJE	1				
7	93210-14369	O-RING ANILLO O	1				
8	90340-32116	PLUG, STRAIGHT SCREW TORNILLO, DE DRENAJE	1				
9	93210-32172	O-RING ANILLO O	1				
10	90465-08188	CLAMP BRIDA	1				
11	98507-06010	SCREW, PAN HEAD TORNILLO DE CABEZA CON PLANA	1				
12	90465-16187	CLAMP BRIDA	1				
13	36X-15421-01	COVER, CRANKCASE 2 TAPA DE CARTER DERECHA 2	1				
14	95027-06025	BOLT, FLANGE PERNO, DE BRIDA	2				
15	36X-15431-01	COVER, CRANKCASE 3 CUBIERTA DE CARTER 3	1				
16	4BE-15462-00	GASKET, CRANKCASE COVER 3 EMPAQ CUBIERTA DE CARTER 3	1				
17	99530-12016	PIN, DOWEL PASADOR, DE ESPIGA	2				
18	95027-06025	BOLT, FLANGE PERNO, DE BRIDA	2				
19	95027-06035	BOLT, FLANGE PERNO, DE BRIDA	2				
20	95027-06045	BOLT, FLANGE PERNO, DE BRIDA	2				
21	3Y1-15363-00	PLUG, OIL TAPON DE ACEITE	1				
22	93210-19123	O-RING ANILLO O	1				
23	3Y1-15361-00	GAUGE, LEVEL MEDIDOR DE NIVEL	1				
24	36X-15378-00	HOLDER SOPORTE	1				

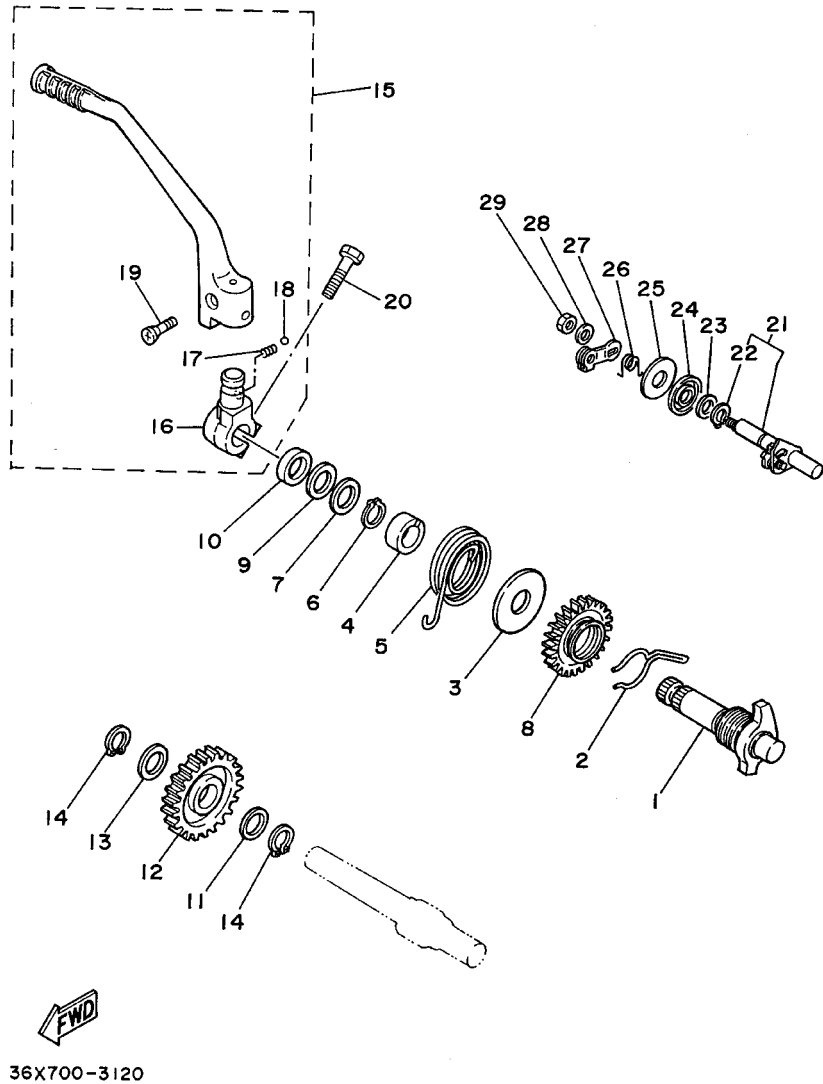
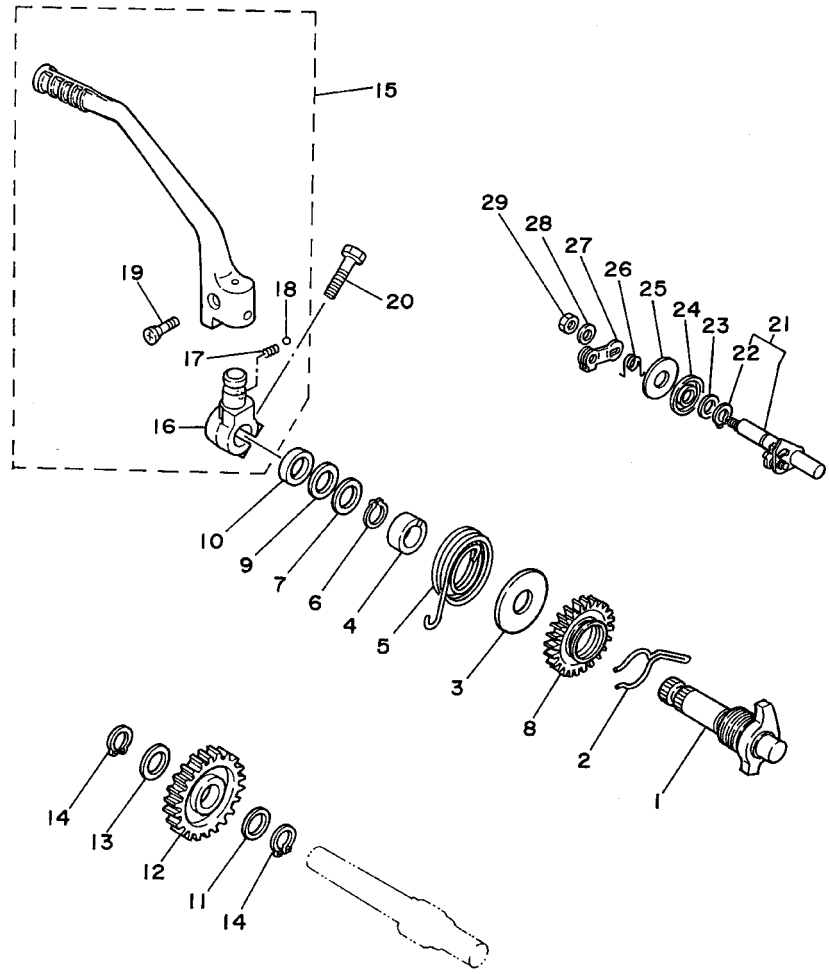


FIG. 12 STARTER

ARRANQUE

REF. NO.	PART NO. CODIGO NO.	DESCRIPTION DESCRIPTION	3GXG				REMARKS OBSERVACION
1	36X-15660-01	KICK AXLE ASSY EJE DEL PEDAL DE ARRAN.COMPLET	1				
2	90468-26122	CLIP PRESILLA	1				
3	401-15676-00	COVER, SPRING CUBIERTA DE RESORTE	1				
4	15A-15666-00	SPACER SEPARADOR	1				
5	90508-26538	SPRING, TORSION RESORTE DE TORSION	1				
6	99009-17400	CIRCLIP PRESILLA REDONDA	1				
7	90201-175F6	WASHER, PLATE ARANDELA PLANA	1				
8	36X-15641-00	GEAR, KICK ENGRANAJE PEDAL ARRANQUE	1				
9	90209-17226	WASHER ARANDELA DE SEPARACION	1				
10	93102-17263	OIL SEAL SELLO ACEITE	1				
11	90201-173F4	WASHER, PLATE ARANDELA PLANA	1				
12	15A-15651-01	GEAR, KICK IDLE (28T) PINON LIBRE, PEDAL ARRANQUE (28T)	1				
13	90214-17028	WASHER, CLAW ARANDELA DE POSICION	1				
14	99009-17400	CIRCLIP PRESILLA REDONDA	2				
15	36X-15620-01	KICK CRANK ASSY MANIVELA DE PEDAL COMPLETA	1				
16	36X-15621-02	.BOSS, KICK CRANK .COPA DE MANIVELA DE PEDAL	1				
17	90501-12081	.SPRING, COMPRESSION .RESORTE DE COMPRESION	1				
18	93507-32009	.BALL .BOLA	1				
19	90152-06010	.SCREW, PAN HEAD .TORNILLO CABEZA CONICA PLANA	1				
20	97027-08030	BOLT PERNO	1				
21	36X-1561A-00	DECOMP. LEVER ASSY PALANCA DE DESCOMPRESION COMPL	1				
22	99009-10400	.CIRCLIP .PRESILLA REDONDA	1				
23	90201-10644	WASHER, PLATE ARANDELA PLANA	1				
24	93102-10207	OIL SEAL (SD 10-21-5 HS) SELLO, ACEITE (SD 10-21-5 HS)	1				
25	90201-10135	WASHER, PLATE ARANDELA PLANA	1				
26	90508-14620	SPRING, TORSION RESORTE DE TORSION	1				
27	36X-1561G-00	LEVER, CABLE PALANCA DE CABLE	1				



36X700-3120

FIG. 12 STARTER

ARRANQUE

REF. NO.	PART NO. CODIGO NO.	DESCRIPTION DESCRIPTION	3GXG				REMARKS OBSERVACION
28	92907-06600	WASHER, PLATE ARANDELA	1				
29	95317-06700	NUT TUERCA	1				

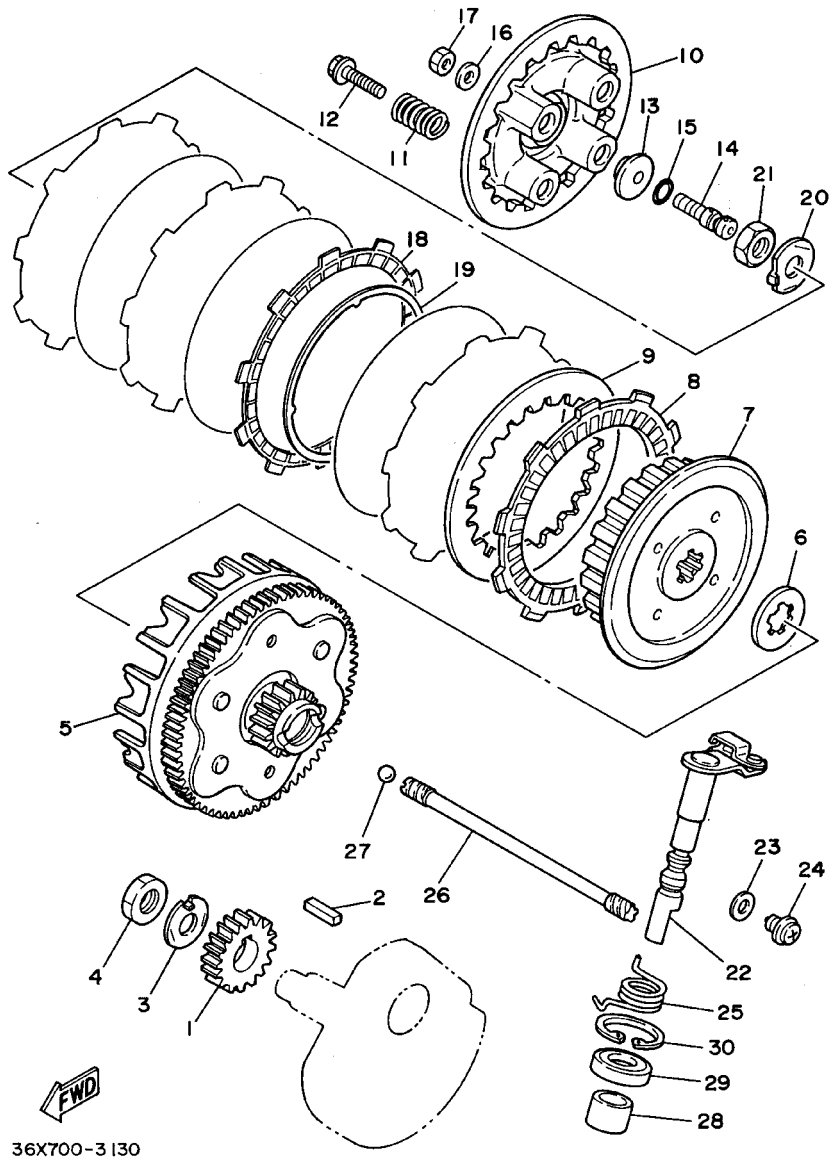


FIG. 13 CLUTCH

EMBRAGUE

REF. NO.	PART NO. CODIGO NO.	DESCRIPTION DESCRIPTION	3GXG				REMARKS OBSERVACION
1	36X-16111-00	GEAR, PRIMARY DRIVE ENGRANAJE TRACC.PRIMARIA	1				
2	90282-05043	KEY, STRAIGHT CHAVETA, RECTA	1				
3	90215-14205	WASHER, LOCK ARANDELA DE CIERRE	1				
4	90170-14284	NUT TUERCA	1				
5	36X-16150-00	PRIMARY DRIVEN GEAR COMP. CAMPANA DE EMBRAGUE	1				
6	5H0-16154-00	PLATE, THRUST 1 ARANDELA, DE EMPUJE 1	1				
7	36X-16371-00	BOSS, CLUTCH CUBO, DE EMBRAGUE	1				
8	537-16321-00	PLATE, FRICTION PLACA DE FRICCION	4				
9	137-16324-00	PLATE, CLUTCH 1 PLACA DE EMBRAGUE 1	4				
10	5H0-16351-00	PLATE, PRESSURE 1 PLATO DE PRESION 1	1				
11	90501-23700	SPRING, COMPRESSION RESORTE DE COMPRESION	4				
12	90159-05011	SCREW, WITH WASHER TORNILLO CON VALONA	4				
13	1W1-16358-01	PLATE, PUSH PLACA DE EMPUJE	1				
14	5H0-16356-01	ROD, PUSH 1 VARILLA DE EMPUJE 1	1				
15	93210-48364	O-RING ANILLO O	1				
16	92907-06200	WASHER ARANDELA	1				
17	95307-06600	NUT TUERCA	1				
18	36X-16321-00	PLATE, FRICTION PLACA DE FRICCION	1				
19	1KH-16383-00	SPRING, CLUTCH BOSS RESORTE DE COPA DE EMBRAGUE	1				
20	90215-14186	WASHER, LOCK ARANDELA DE CIERRE	1				
21	90170-14284	NUT TUERCA	1				
22	15A-16380-00	PUSH LEVER ASSY LEVA DE EMPUJE COMPLETA	1				
23	90430-08119	GASKET JUNTA	1				
24	90149-08067	SCREW TORNILLO DE REGLAJE	1				
25	90508-18537	SPRING, TORSION RESORTE DE TORSION	1				
26	5H0-16357-00	ROD, PUSH 2 VARILLA DE EMPUJE 2	1				
27	93505-16006	BALL BOLA	1				

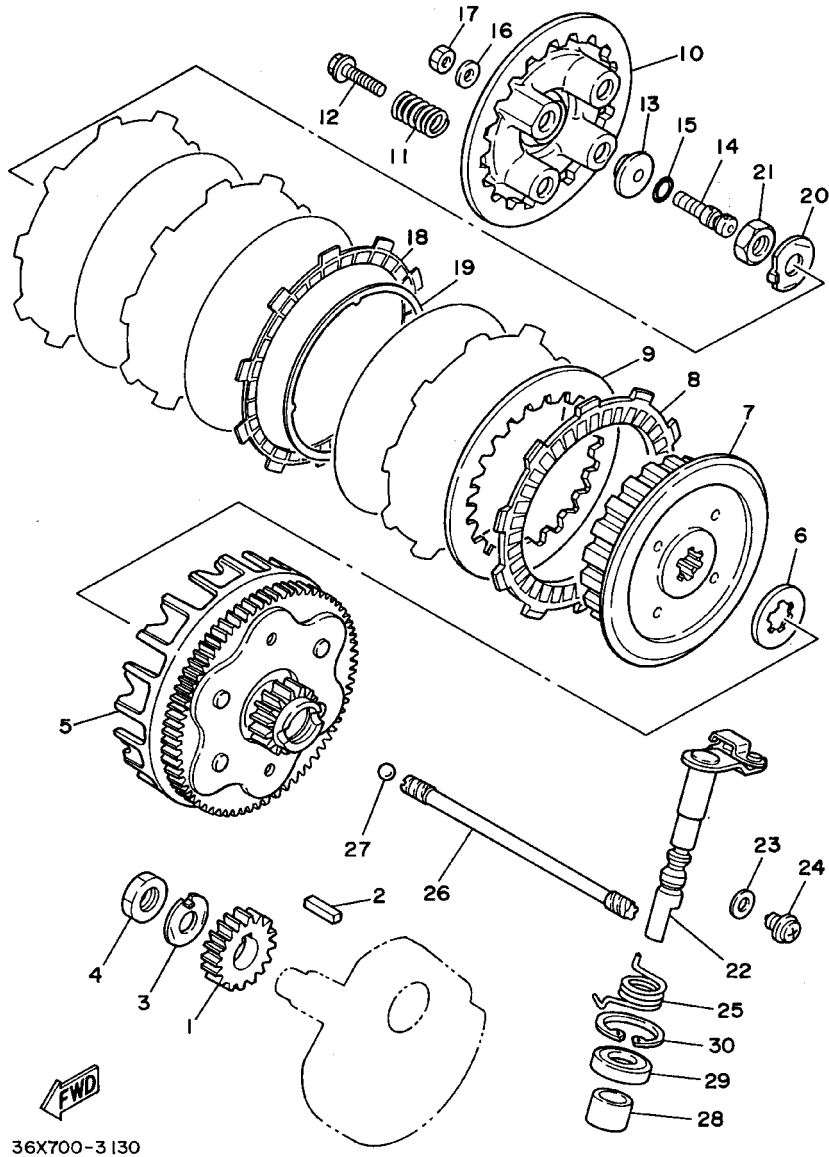
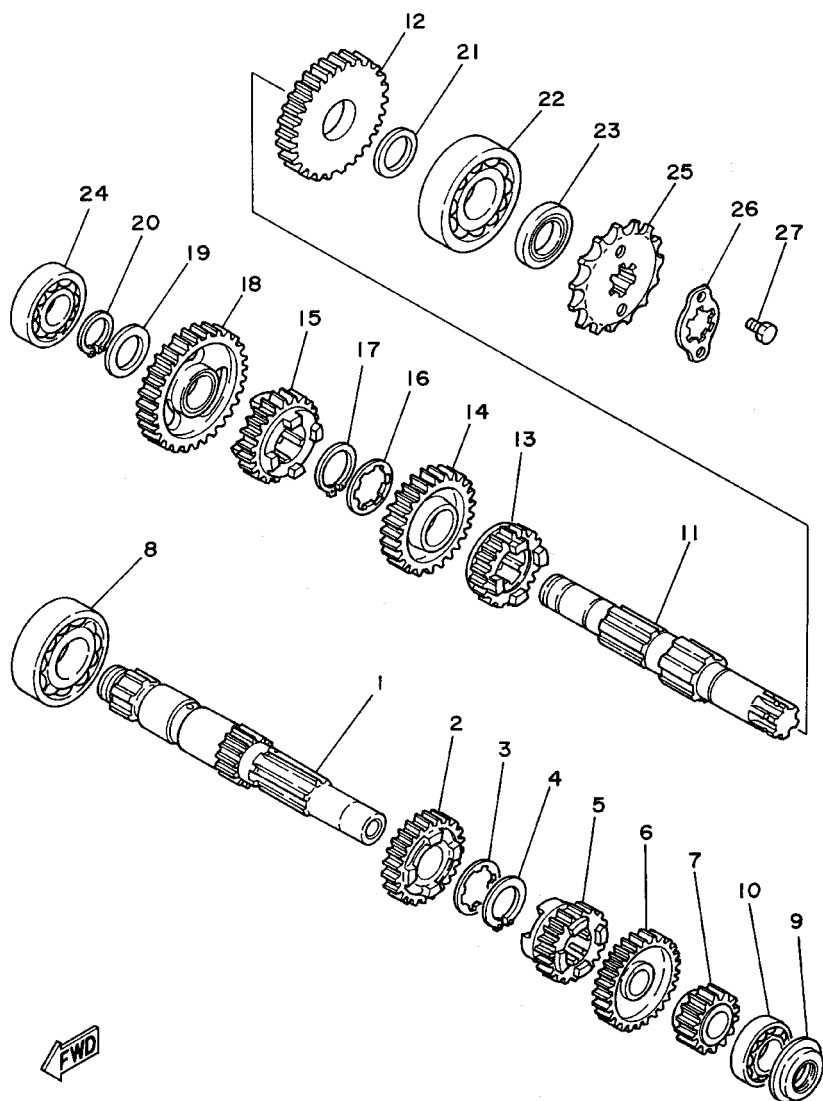


FIG. 13 CLUTCH

EMBRAGUE

REF. NO.	PART NO. CODIGO NO.	DESCRIPTION DESCRIPTION	3GXG				REMARKS OBSERVACION
28	90386-14103	BUSH BUJE	1				
29	93102-14209	OIL SEAL SELLO ACEITE	1				
30	93420-28055	CIRCLIP BOLA	1				



36X700-3140

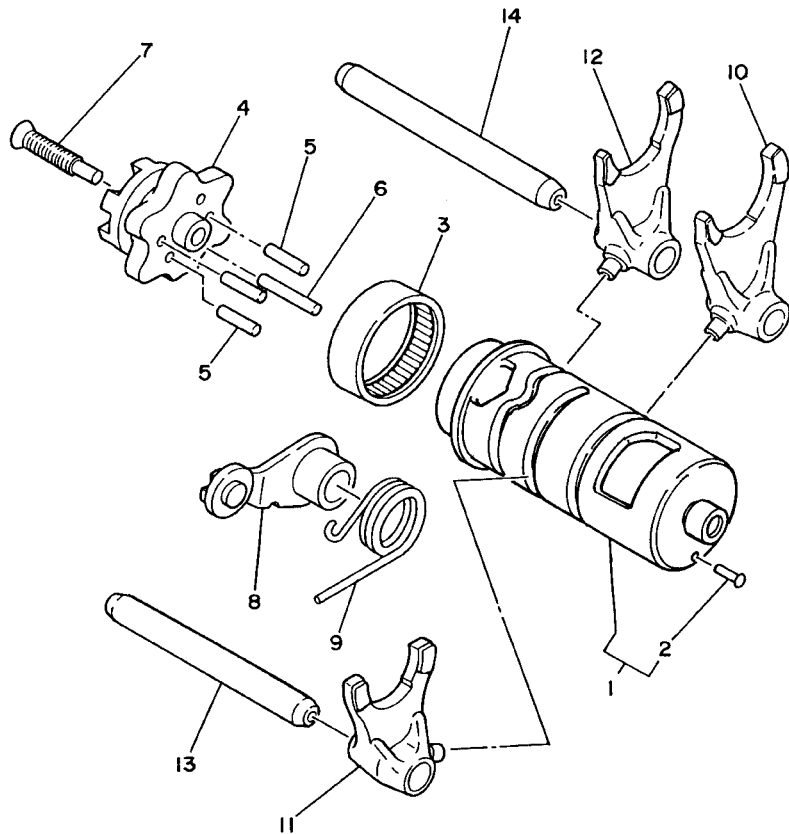
FIG. 14 TRANSMISSION

TRANSMISION

REF. NO.	PART NO. CODIGO NO.	DESCRIPTION DESCRIPTION	3GXG				REMARKS OBSERVACION
1	36X-17411-00	AXLE, MAIN EJE PRIMARIO	1				
2	36X-17141-01	GEAR, 4TH PINION (26T) ENGRANAJE PINON DE 4TA (26T)	1				
3	90209-16209	WASHER ARANDELA DE SEPARACION	1				
4	93410-20038	CIRCLIP BOLA	1				
5	24W-17131-00	GEAR, 3RD PINION (21T) ENGRANAJE PINON DE 3RA (21T)	1				
6	36X-17151-00	GEAR, 5TH PINION (31T) ENGRANAJE PINON DE 5TA (31T)	1				
7	24W-17121-00	GEAR, 2ND PINION (15T) ENGRANAJE DE PINON DE 2DA (15T)	1				
8	93306-20401	BEARING (B6204) COJINETE (B6204)	1				
9	93101-15101	OIL SEAL SELLO ACEITE	1				
10	93306-20201	BEARING (B6202) COJINETE	1				
11	15A-17402-01	DRIVE AXLE ASSY EJE DE TRACCION COMPLETO	1				
12	36X-17221-01	GEAR, 2ND WHEEL (31T) ENGRANAJE RUEDA DE 2DA (31T)	1				
13	36X-17251-00	GEAR, 5TH WHEEL (22T) ENGRANAJE RUEDA DE 5TA (22T)	1				
14	24W-17231-00	GEAR, 3RD WHEEL (30T) ENGRANAJE RUEDA DE 3RA (30T)	1				
15	36X-17241-01	GEAR, 4TH WHEEL (20T) ENGRANAJE DE RUEDA 4TA (20T)	1				
16	90209-18208	WASHER ARANDELA DE SEPARACION	1				
17	93410-22039	CIRCLIP BOLA	1				
18	36X-17211-00	GEAR, 1ST WHEEL (35T) ENGRANAJE RUEDA DE 1 RA (35T)	1				
19	90201-17257	WASHER, PLATE ARANDELA PLANA	1				
20	99009-17400	CIRCLIP PRESILLA REDONDA	1				
21	90201-203E7	WASHER, PLATE ARANDELA PLANA	1				
22	93306-30424	BEARING (B6304A3) COJINETE (B6304A3)	1				
23	93102-20004	OIL SEAL SELLO ACEITE	1				
24	93306-20332	BEARING COJINETE	1				
25	93822-14043	SPROCKET, DRIVE 14T(5N01746141) RUEDA DENTADA 14T(5N01746141)	1				
26	5H0-17456-00	HOLDER, SPROCKET SOPORTE DE CORONA	1				
27	97027-06010	BOLT PERNO	2				

FIG. 15 SHIFT CAM. FORK

LEVA DE CAMBIO. HORQ



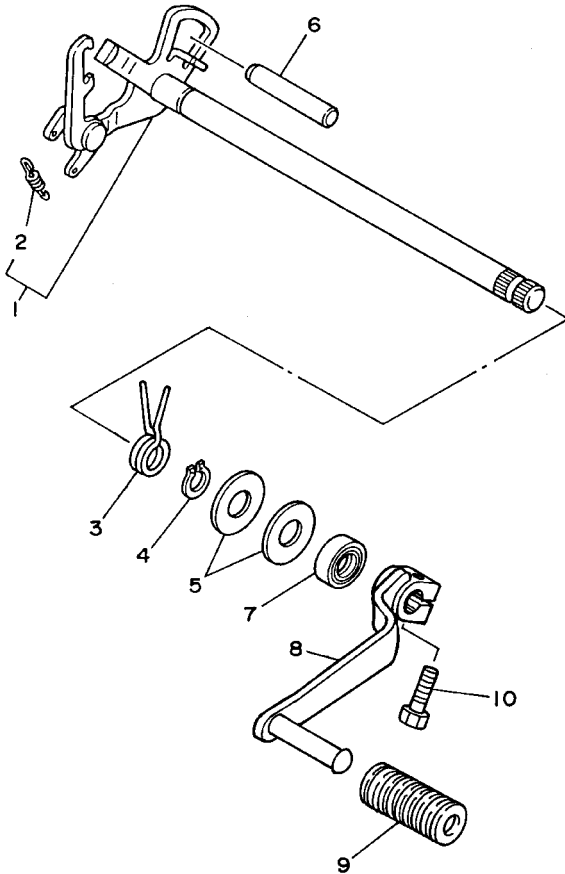
REF. NO.	PART NO. CODIGO NO.	DESCRIPTION DESCRIPTION	3GXG				REMARKS OBSERVACION
1	36X-18540-00	SHIFT CAM ASSY LEVADEL CAMBIO COMPLETA	1				
2	136-18542-00	.POINT, NEUTRAL .PUNTO MVERTO	1				
3	93315-23607	BEARING COJINETE	1				
4	5H0-18185-01	SEGMENT SEGMENTO DE RETENCION	1				
5	93604-16092	PIN, DOWEL PASADOR DE CLAVIJA	4				
6	93604-20156	PIN, DOWEL PASADOR DE CLAVIJA	1				
7	90151-06013	SCREW, COUNTERSUNK TORNILLO EMBUTIDO	1				
8	4G0-18140-00	STOPPER LEVER ASSY PALANCA DE TOPE COMPLETA	1				
9	90508-26539	SPRING, TORSION RESORTE DE TORSION	1				
10	36X-18513-00	FORK, SHIFT 3 HORQUILLA DE CAMBIO 3	1				
11	4JG-18511-00	FORK, SHIFT 1 HORQUILLA DEL CAMBIO 1	1				
12	4JG-18512-01	FORK, SHIFT 2 HORQUILLA DEL CAMBIO 2	1				
13	3GX-18531-00	BAR, SHIFT FORK GUIDE 1 BARRA GUIA HORQ. CAMBIO 1	1				
14	3GX-18535-00	BAR, SHIFT FORK GUIDE 2 BARRA GUIA HORQ. CAMBIO 2	1				



36X700-3151

FIG. 16 SHIFT SHAFT

EJE DE CAMBIO. PEDAL



REF. NO.	PART NO. CODIGO NO.	DESCRIPTION DESCRIPTION	3GXG				REMARKS OBSERVACION
1	5H0-18120-02	SHIFT LEVER ASSY PALANCA DE SELECTOR COMPLETO	1				
2	90506-08227	.SPRING, TENSION .RESORTE DE TENSION	1				
3	90508-29540	SPRING, TORSION RESORTE DE TORSION	1				
4	99001-10600	CIRCLIP PRESILLA REDONDA	1				
5	90201-12588	WASHER, PLATE ARANDELA PLANA	2				
6	93608-50158	PIN, DOWEL PASADOR DE CLAVIJA	1				
7	93102-12106	OIL SEAL (SD 12-22-5 HS) SELLO ACEITE (SD 12-22-5 HS)	1				
8	36X-18111-00	PEDAL, SHIFT PEDAL DEL CAMBIO	1				
9	132-18113-01	COVER, SHIFT PEDAL FUNDA DEL PEDAL DEL CAMBIO	1				
10	97027-06020	BOLT PERNO	1				



3GX700-8160



3GXB200-7170

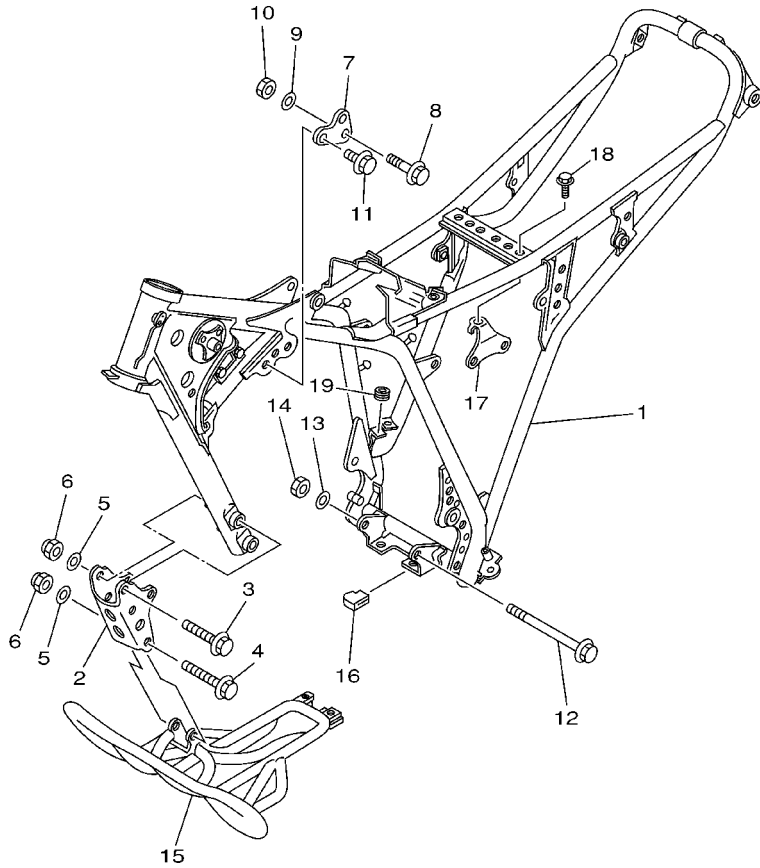


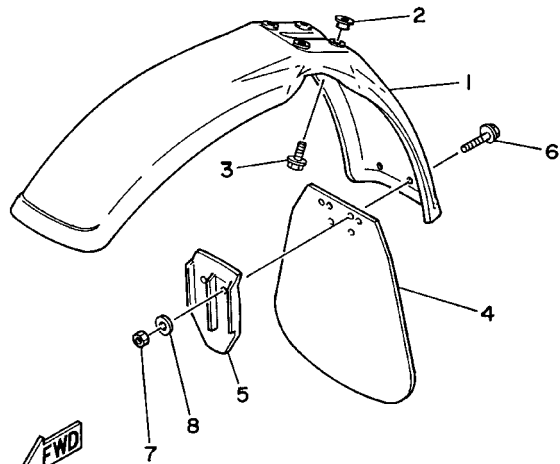
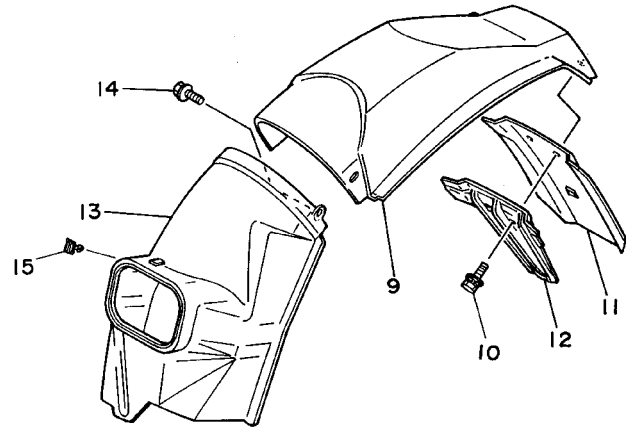
FIG. 17 FRAME

CUADRO

REF. NO.	PART NO. CODIGO NO.	DESCRIPTION DESCRIPTION	3GXG				REMARKS OBSERVACION
1	3GX-21110-00-33	FRAME COMP. ARMAZON COMPLETO	1				YB
2	36X-21316-00	STAY, ENGINE 3 SOPORTE DE MOTOR 3	1				
3	95817-08065	BOLT, FLANGE TUERCA DE REBORDE	3				
4	95817-08070	BOLT, FLANGE TUERCA DE REBORDE	1				
5	90201-08366	WASHER, PLATE ARANDELA PLANA	4				
6	90185-08089	NUT, SELF-LOCKING TUERCA AUTOBLOCANTE	4				
7	36X-21315-00	STAY, ENGINE 2 SOPORTE DE MOTOR 2	1				
8	95817-08050	BOLT, FLANGE TUERCA DE REBORDE	1				
9	90201-08366	WASHER, PLATE ARANDELA PLANA	1				
10	90185-08089	NUT, SELF-LOCKING TUERCA AUTOBLOCANTE	1				
11	90105-08066	BOLT, FLANGE TORNILLO	2				
12	95827-08120	BOLT, FLANGE TUERCA DE REBORDE	1				
13	90201-08366	WASHER, PLATE ARANDELA PLANA	1				
14	90185-08089	NUT, SELF-LOCKING TUERCA AUTOBLOCANTE	1				
15	36X-21471-00	PROTECTOR, ENGINE PROTECTOR DE MOTOR	1				UR YB FOR YNS3
	36X-21471-20	PROTECTOR, ENGINE PROTECTOR DE MOTOR	1				UR SL FOR SBE
16	36X-21485-00	DAMPER, RUBBER 1 AMORTIGUADOR DE GOMA 1	2				
17	36X-21287-00	BRACKET, REGULATOR SOPORTE DE REGULADOR	1				
18	95807-06008	BOLT, FLANGE TUERCA DE REBORDE	1				
19	90480-14229	GROMMET TAPON	1				

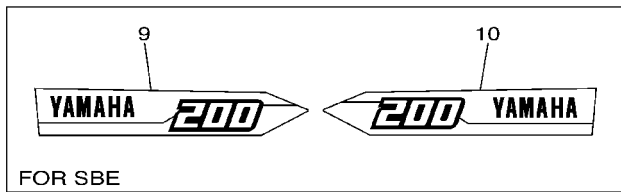
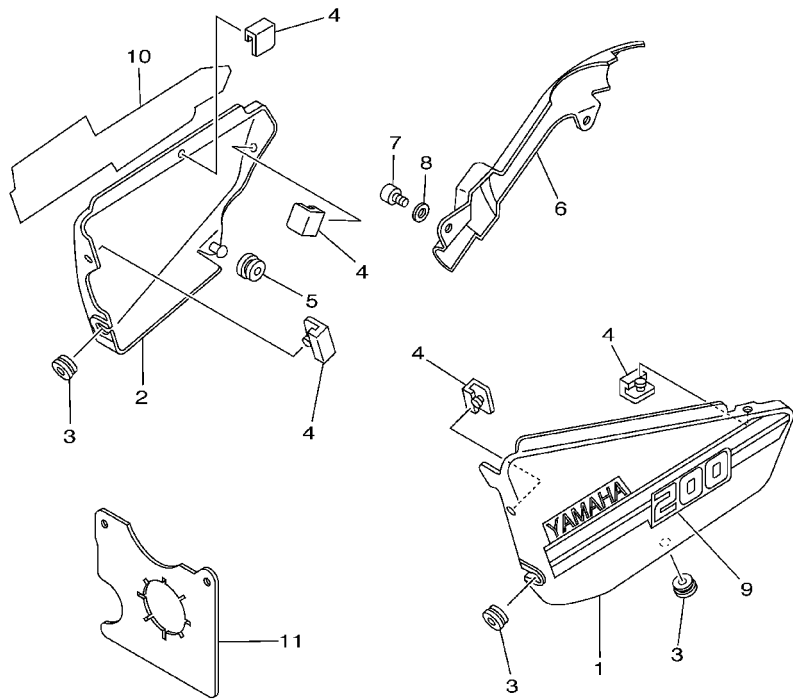
FIG. 18 FENDER

GUARDABARRO



36X700-3180

REF. NO.	PART NO. CODIGO NO.	DESCRIPTION DESCRIPTION	3GXG			REMARKS OBSERVACION
1	36X-21511-40	FENDER, FRONT GUARDABARRO DELANTERO	1			UR YNS3
	36X-21511-60	FENDER, FRONT GUARDABARRO DELANTERO	1			UR SBE
2	90387-062V8	COLLAR COLLAR	4			
3	90119-06063	BOLT, WITH WASHER TORNILLO CON ARANDELA	4			
4	36X-21521-00	FLAP, FRONT FENDER CHARNELA DE GUARDABARRO	1			
5	36X-21522-00	BAND, FLAP BANDA DE CHARNELA	1			
6	90159-06085	SCREW, WITH WASHER TORNILLO CON VALONA	2			
7	95307-06700	NUT TUERCA	2			
8	90201-06557	WASHER, PLATE ARANDELA PLANA	2			
9	36X-21611-20	FENDER, REAR GUARDABARRO TRASERO	1			UR YNS3
	36X-21611-40	FENDER, REAR GUARDABARRO TRASERO	1			UR SBE
10	90119-06097	BOLT, WITH WASHER TORNILLO CON ARANDELA	2			
11	36X-21621-00	FLAP CHARNELA	1			
12	36X-21622-00	BAND, FLAP BANDA DE CHARNELA	1			
13	36X-21629-01	GUARD, MUD GUARDABARRO INFERIOR	1			
14	90119-06063	BOLT, WITH WASHER TORNILLO CON ARANDELA	2			
15	90464-13249	CLAMP BRIDA	2			



3GXG200-A190

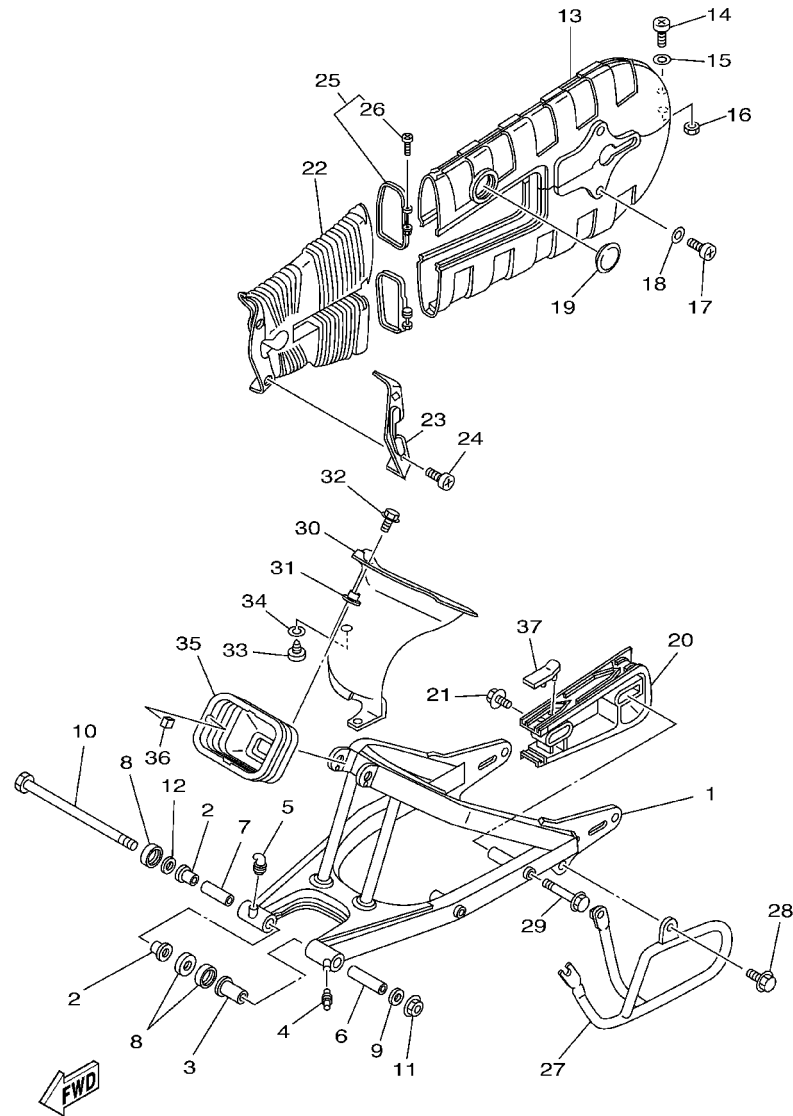
FIG. 19 SIDE COVER

CUBIERTA LATERAL

REF. NO.	PART NO. CODIGO NO.	DESCRIPTION DESCRIPTION	3GXG			REMARKS OBSERVACION
1	36X-21711-20	COVER, SIDE 1 JUEGO DE GRAFICOS 1	1			UR YNS3
	36X-21711-40	COVER, SIDE 1 JUEGO DE GRAFICOS 1	1			UR SBE
2	36X-21721-20	COVER, SIDE 2 JUEGO DE GRAFICOS 2	1			UR YNS3
	36X-21721-40	COVER, SIDE 2 JUEGO DE GRAFICOS 2	1			UR SBE
3	90480-12320	GROMMET TAPON	3			
4	3M7-21746-00	DAMPER AMORTIGUADOR	5			
5	90480-01141	GROMMET TAPON	1			
6	36X-2172A-00	PANEL 1 PANEL 1	1			
7	98507-06012	SCREW, PAN HEAD TORNILLO DE CABEZA CON PLANA	2			
8	92907-06600	WASHER, PLATE ARANDELA	2			
9	3GX-2173E-10	GRAPHIC 1 GRAFICO 1	1			UR FOR YNS3
	3GX-2173E-30	GRAPHIC 1 GRAFICO 1	1			UR FOR SBE
10	3GX-2173F-10	GRAPHIC 2 GRAFICO 2	1			UR FOR YNS3
	3GX-2173F-30	GRAPHIC 2 GRAFICO 2	1			UR FOR SBE
11	36X-2177F-00	COVER CUBIERTA	1			

FIG. 20 REAR ARM

BRAZO TRASERO

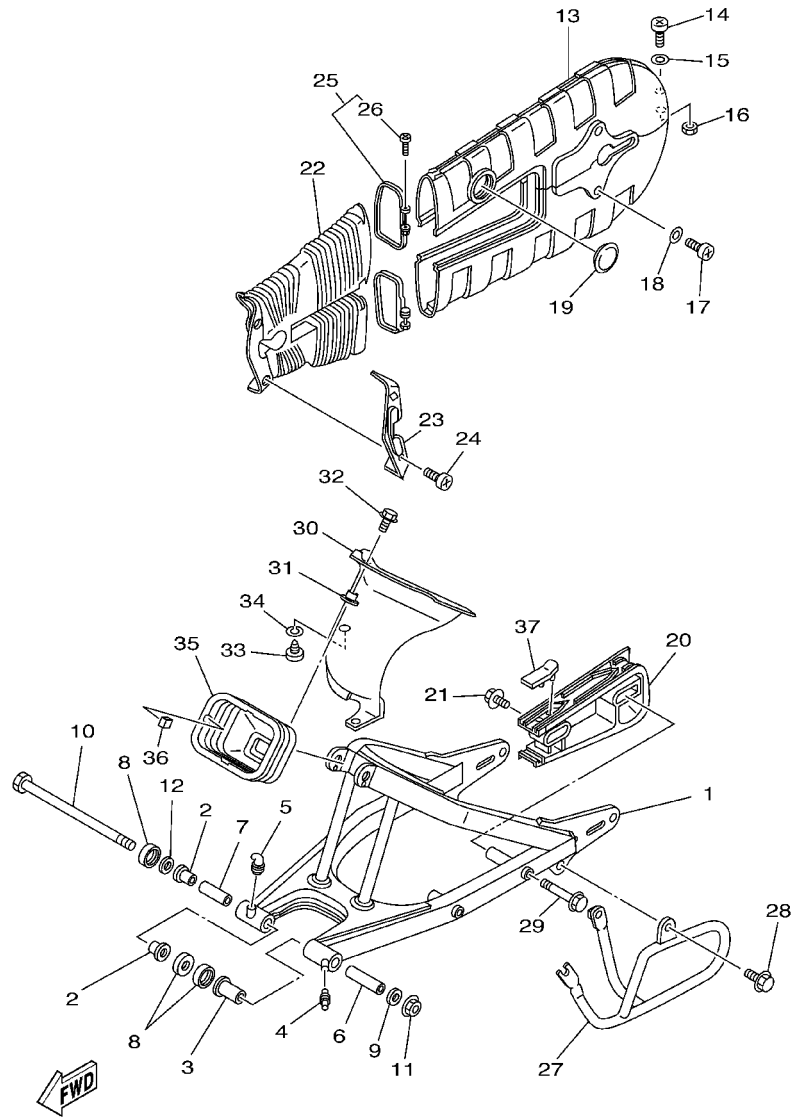


3GXB200-7201

REF. NO.	PART NO. CODIGO NO.	DESCRIPTION DESCRIPTION	3GXB			REMARKS OBSERVACION
1	36X-22110-00-35	REAR ARM COMP. BRAZO TRASERO COMPLETO	1			SL
2	15A-22123-00	BUSH 1 BUJE 1	2			
3	90386-18028	BUSH BUJE	1			
4	93700-06004	NIPPLE, GREASE NIPLE DE ENGRASAR	1			
5	93700-06009	NIPPLE, GREASE NIPLE DE ENGRASAR	1			
6	36X-22126-00	COLLAR, DISTANCE COLLAR DISTANCIADOR	1			
7	36X-22126-10	COLLAR, DISTANCE COLLAR DISTANCIADOR	1			
8	401-22128-01	SEAL, GUARD TAPA DE EMPIJE 1	3			
9	93109-18020	OIL SEAL SELLO ACEITE	1			
10	36X-22141-01	SHAFT, PIVOT EJE DEL BARCULANTE	1			
11	90185-12072	NUT, SELF-LOCKING TUERCA AUTOBLOCANTE	1			
12	401-22127-00	SHIM CUNA	1			UN
13	36X-22310-00-35	CHAIN CASE ASSY CAJA DE CADENA COMPLETA	1			SL
14	98507-06045	SCREW, PAN HEAD TORNILLO DE CABEZA CON PLANA	1			
15	92907-06600	WASHER, PLATE ARANDELA	1			
16	95607-06200	NUT, SELF U-FLANGE TUERCA DE AUTO-CIERRE	1			
17	98507-06016	SCREW, PAN HEAD TORNILLO DE CABEZA CON PLANA	2			
18	92907-06600	WASHER, PLATE ARANDELA	2			
19	148-22315-00	CAP TAPA	1			
20	36X-22358-00	SEAL 1 SELLO 1	1			
21	90119-06074	BOLT, WITH WASHER TORNILLO CON ARANDELA	1			
22	36X-22325-00	COVER, DUST CUBIERTA PARA POLVO	1			
23	36X-22324-00	STAY, DUST COVER SOPORTE DE CUBIERTA PARA POLVO	1			
24	98507-05008	SCREW, PAN HEAD TORNILLO DE CABEZA CON PLANA	2			
25	36X-22323-00	STAY, CHAIN CASE 3 SOPORTE DE CAJA DE CADENA 3	2			
26	98507-04030	SCREW, PAN HEAD TORNILLO DE CABEZA CON PLANA	1			
27	36X-22318-00	GUARD, CHAIN GUARDACADENA	1			

FIG. 20 REAR ARM

BRAZO TRASERO

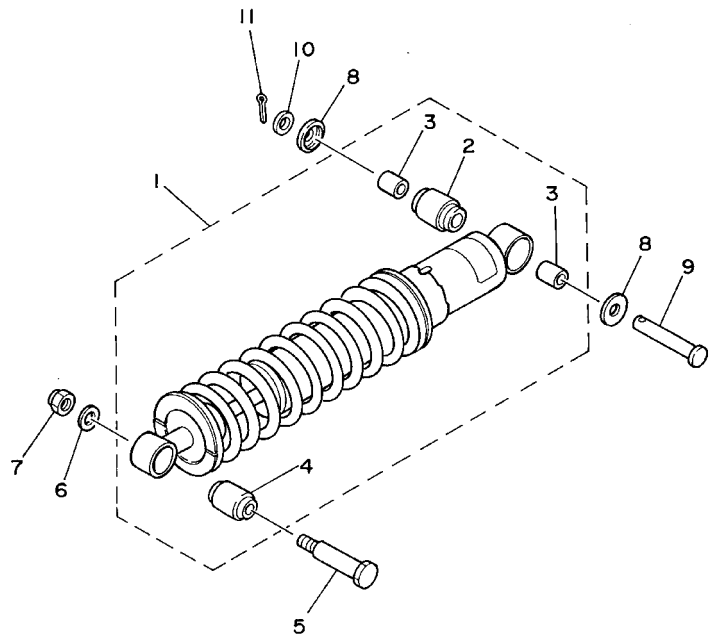


3GXB200-7201

REF. NO.	PART NO. CODIGO NO.	DESCRIPTION DESCRIPTION	3GXB				REMARKS OBSERVACION
28	95807-08012	BOLT, FLANGE TUERCA DE REBORDE	2				
29	95827-08090	BOLT, FLANGE TUERCA DE REBORDE	1				
30	36X-22327-00	MUD GUARD 1 GUARDAFANGO 1	1				
31	90387-06681	COLLAR COLLAR	1				
32	95807-06016	BOLT, FLANGE TUERCA DE REBORDE	1				
33	97707-50512	SCREW, TAPPING TORNILLO ROSCA HEMBRA	2				
34	90201-05032	WASHER, PLATE ARANDELA PLANA	2				
35	36X-22189-00	BOOT, RUBBER FUNDA DE GOMA	1				
36	90468-06134	CLIP PRESILLA	4				
37	36X-22151-00	SEAL, GUARD SELLO DE GUARDA	1				

FIG. 21 REAR SUSPENSION

SUSPENSION TRASERO

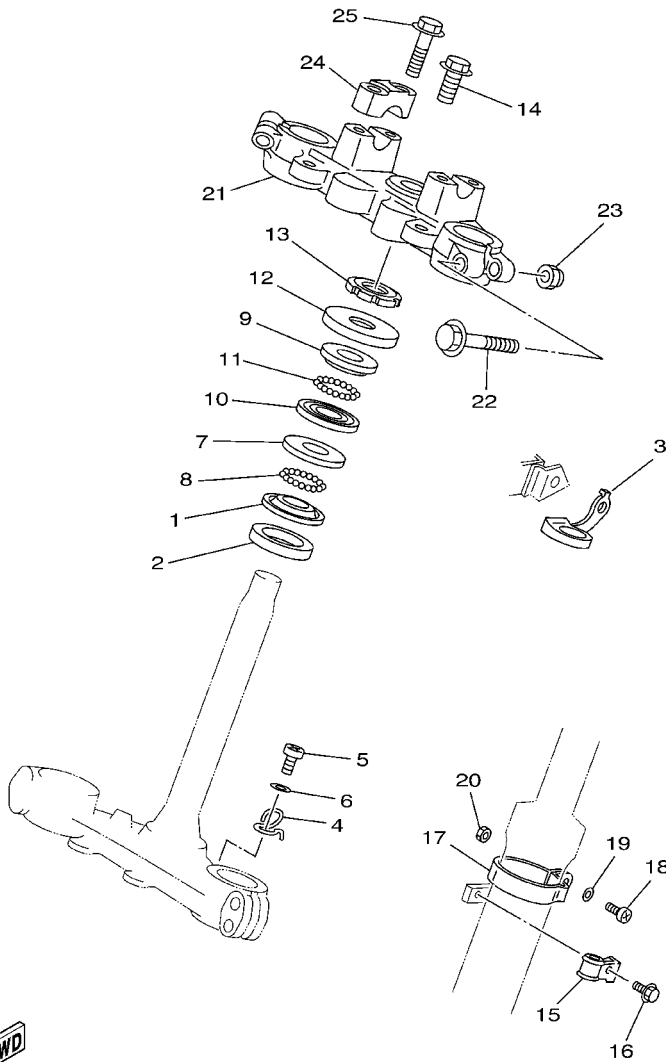


REF. NO.	PART NO. CODIGO NO.	DESCRIPTION DESCRIPTION	3GXG					REMARKS OBSERVACION
1	36X-22210-20	SHOCK ABSORBER ASSY, REAR AMORTIGUADOR TRASERO COMPLETO	1					
2	3R4-22226-00	.BUSH, SHOCK ABSORBER LOWER .BUJE DE AMORTIGUADOR INFERIO	1					
3	90380-12051	.BUSH, SOLID .CASQUILLO SOLIDO	2					
4	1YW-22216-00	.BUSH, REAR SHOCK ABSORBER .BUJE DEL AMORTIGUADOR TRASERO	1					
5	90109-10554	BOLT PERNO	1					
6	90201-10126	WASHER, PLATE ARANDELA PLANA	1					
7	95607-10100	NUT, U TUERCA AUTOBLOCANTE	1					
8	1W1-22128-00	COVER, THRUST 1 TAPA DE EMPIJE 1	2					
9	90240-12092	PIN, CLEVIS PASADOR CON HOYO	1					
10	92907-12600	WASHER ARANDELA	1					
11	91401-25020	PIN, COTTER PASADOR DE CHAVETA	1					

FWD
36X700-3210

FIG. 22 STEERING

DIRECCION

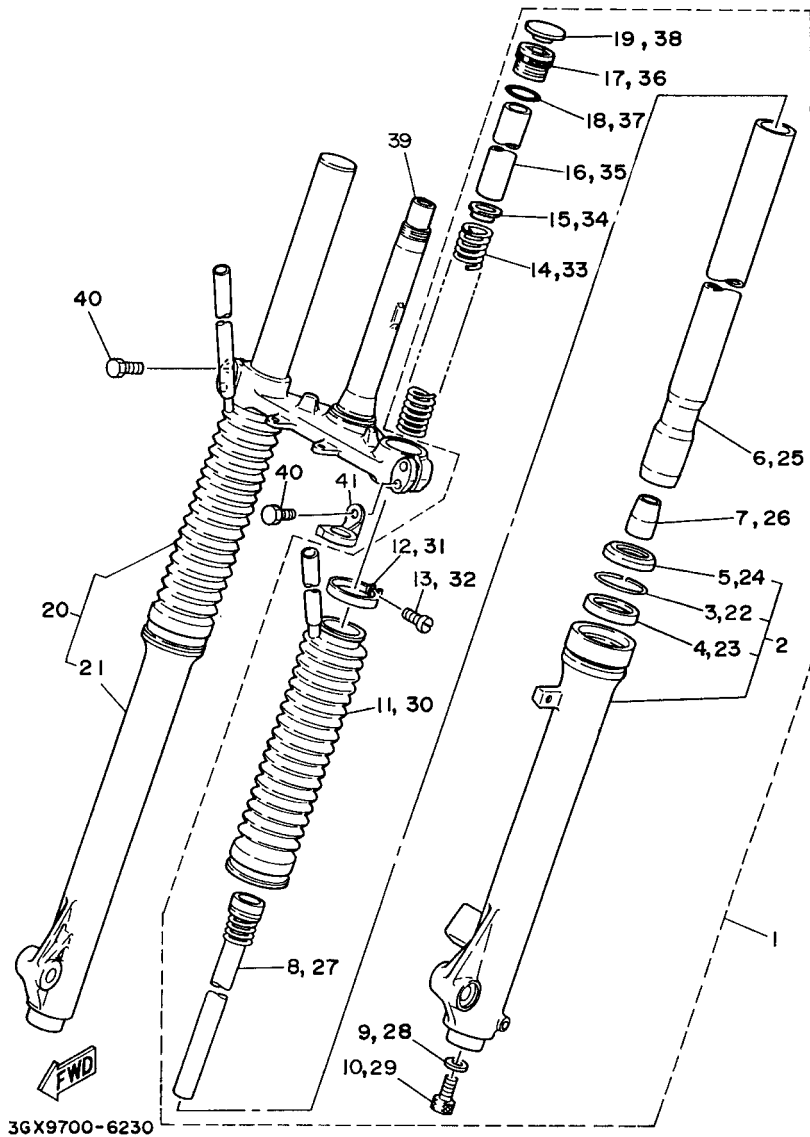


REF. NO.	PART NO. CODIGO NO.	DESCRIPTION DESCRIPTION	3GXB				REMARKS OBSERVACION
1	156-23411-00	RACE, BALL 1 PISTA DE BOLAS 1	1				
2	164-23462-00	SEAL, STEERING RETEN DE DIRECCION	1				
3	36X-23389-00	GUIDE, CABLE GUIA DE CABLE	1				
4	36X-2331E-00	GUIDE, CABLE GUIA DE CABLE	1				
5	98507-06012	SCREW, PAN HEAD TORNILLO DE CABEZA CON PLANA	1				
6	92907-06600	WASHER, PLATE ARANDELA	1				
7	156-23412-00	RACE, BALL 2 PISTA DE BOLAS 2	1				
8	93501-04011	BALL BOLA	19				
9	22F-23411-01	RACE, BALL 1 PISTA DE BOLAS 1	1				
10	22F-23412-01	RACE, BALL 2 PISTA DE BOLAS 2	1				
11	93503-16003	BALL BOLA	22				
12	36X-23416-00	COVER, BALL RACE 2 CUBIERTA DE BASE DE BOLA 2	1				
13	90179-25033	NUT TUERCA	1				
14	90105-14102	BOLT, FLANGE TORNILLO	1				
15	3Y1-23319-00	HOLDER, CABLE 2 SOSTEN DE CABLE 2	1				
16	95807-06012	BOLT, FLANGE TUERCA DE REBORDE	1				
17	3R9-23318-00	HOLDER, CABLE 1 SOSTEN DE CABLE 1	1				
18	98507-05016	SCREW, PAN HEAD TORNILLO DE CABEZA CON PLANA	1				
19	92907-05600	WASHER, PLATE ARANDELA	1				
20	95307-05600	NUT TUERCA	1				
21	36X-23435-00	CROWN, HANDLE PLATINA SUPERIOR	1				
22	95827-10060	BOLT, FLANGE TUERCA DE REBORDE	2				
23	90185-10091	NUT, SELF-LOCKING TUERCA AUTOBLOCANTE	2				
24	1E6-23441-10-98	HOLDER, HANDLE UPPER SOPORTE DE MANUBRIO	2				LGB
25	95827-08035	BOLT, FLANGE TUERCA DE REBORDE	4				

3GXB200-7221

FIG. 23 FRONT FORK

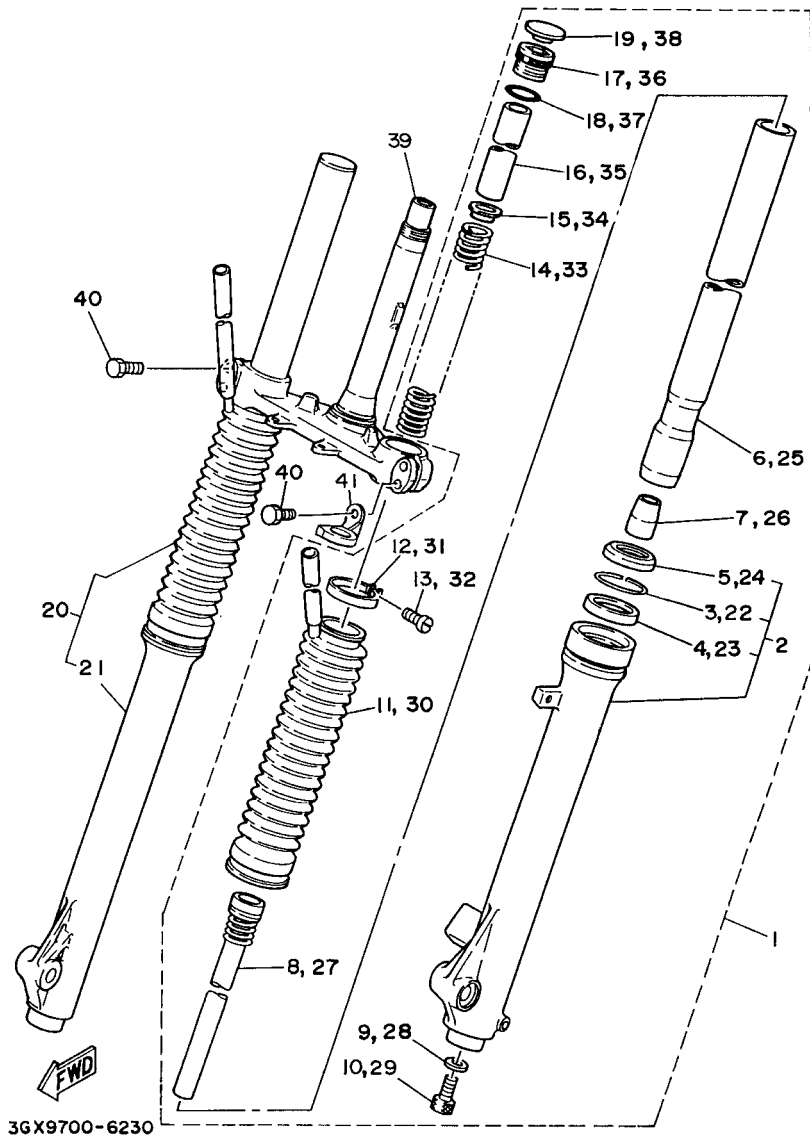
HORQUILLA DELANTERA



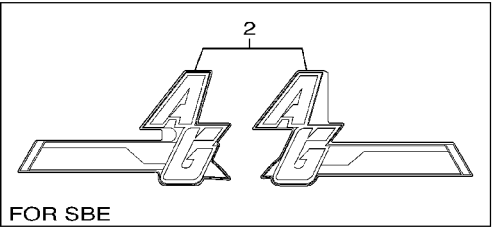
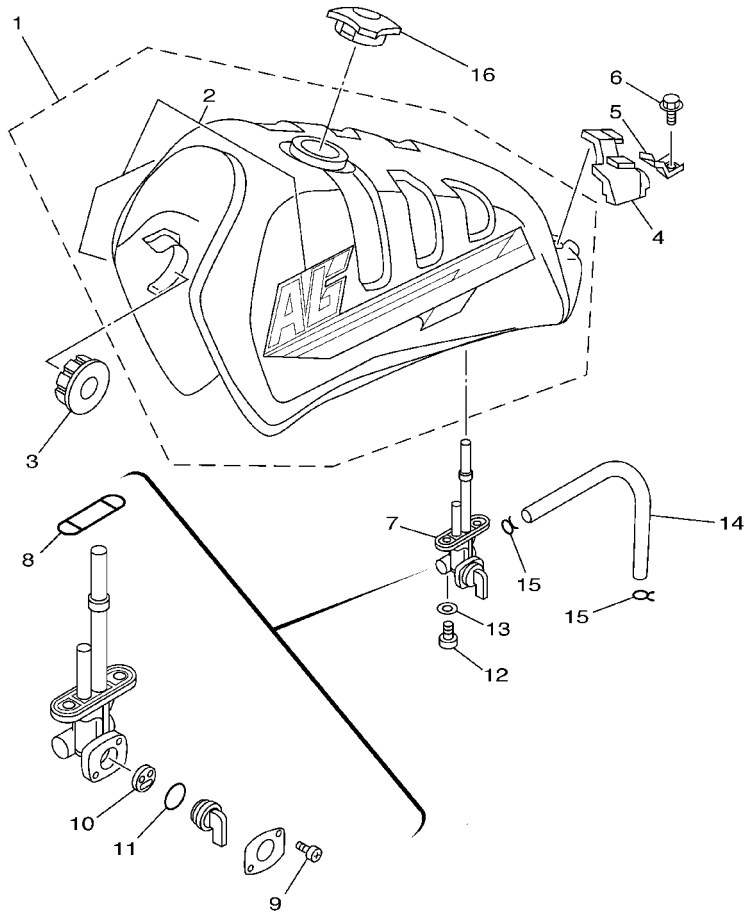
REF. NO.	PART NO. CODIGO NO.	DESCRIPTION DESCRIPTION	3GXG				REMARKS OBSERVACION
1	36X-23102-10	FRONT FORK ASSY (L.H) HORQUILLA DELANTERA COMPL.(MI)	1				
2	36X-23107-00-35	.OUTER TUBE COMP. (R.H) .TUBO EXTERIOR COMPLETO 2	1				SL
3	4A1-23156-00	..CLIP, OIL SEAL ..PRESILLA DEL RETEN DE ACEITE	1				
4	1T3-23145-00	..OIL SEAL ..RETEN DE ACEITE	1				
5	3R2-23144-00	..SEAL, DUST ..GUARDAPOLVO	1				
6	36X-23110-00	.INNER TUBE COMP.1 .TUBO INTERIOR COMPLETO 1	1				
7	1W1-23173-L0	.SPINDLE, TAPER .VASTAGO AHUSADO	1				
8	36X-23170-00	.CYLINDER COMP., FRONT FORK .CILINDRO COMPL DE HORQ DELAN	1				
9	509-23158-L0	.GASKET .EMPAQUE	1				
10	278-23181-50	.BOLT, HEXAGON SOCKET HEAD .TORNILLO CABEZAHEXAGONAL	1				
11	36X-23191-10	.BOOT .FUNDA	1				
12	36X-23192-00	.BAND .BANDA	1				
13	4V2-23194-L0	.SCREW, BOOT BAND .TORNILLO DE BANDA DE FUNDA	1				
14	36X-23141-00	.SPRING, FRONT FORK .RESORTE HORQUILLA DELANT.	1				
15	3DM-23149-10	.WASHER, SPRING UPPER .ARANDELA DE RESORTE SUPERIOR	1				
16	36X-23118-00	.SPACER .SEPARADOR	1				
17	1U6-23111-M1	.BOLT, CAP .TAPON	1				
18	240-23114-00	.GASKET .EMPAQUE	1				
19	1U6-23168-M0	.CAP, FRONT FORK .TAPA DE HORQUILLA DELANTERA	1				
20	36X-23103-10	FRONT FORK ASSY (R.H) HORQUILLA DELANTERA COMPL.(MD)	1				
21	36X-23106-00-35	.OUTER TUBE COMP. (L.H) .TUBO EXTERIOR COMPLETO 1	1				SL
22	4A1-23156-00	..CLIP, OIL SEAL ..PRESILLA DEL RETEN DE ACEITE	1				
23	1T3-23145-00	..OIL SEAL ..RETEN DE ACEITE	1				
24	3R2-23144-00	..SEAL, DUST ..GUARDAPOLVO	1				
25	36X-23110-00	.INNER TUBE COMP.1 .TUBO INTERIOR COMPLETO 1	1				
26	1W1-23173-L0	.SPINDLE, TAPER .VASTAGO AHUSADO	1				
27	36X-23170-00	.CYLINDER COMP., FRONT FORK .CILINDRO COMPL DE HORQ DELAN	1				

FIG. 23 FRONT FORK

HORQUILLA DELANTERA



REF. NO.	PART NO. CODIGO NO.	DESCRIPTION DESCRIPTION	3GXG				REMARKS OBSERVACION
28	509-23158-L0	.GASKET .EMPAQUE	1				
29	278-23181-50	.BOLT, HEXAGON SOCKET HEAD .TORNILLO CABEZAHEXAGONAL	1				
30	36X-23191-10	.BOOT .FUNDA	1				
31	36X-23192-00	.BAND .BANDA	1				
32	4V2-23194-L0	.SCREW, BOOT BAND .TORNILLO DE BANDA DE FUNDA	1				
33	36X-23141-00	.SPRING, FRONT FORK .RESORTE HORQUILLA DELANT.	1				
34	3DM-23149-10	.WASHER, SPRING UPPER .ARANDELA DE RESORTE SUPERIOR	1				
35	36X-23118-00	.SPACER .SEPARADOR	1				
36	1U6-23111-M1	.BOLT, CAP .TAPON	1				
37	240-23114-00	.GASKET .EMPAQUE	1				
38	1U6-23168-M0	.CAP, FRONT FORK .TAPA DE HORQUILLA DELANTERA	1				
39	36X-23340-00-33	UNDER BRACKET COMP. PLATINA INFERIOR COMPLETA	1				YB
40	3YF-23181-00	BOLT, HEXAGON SOCKET HEAD TORNILLO CABEZAHEXAGONAL	4				
41	3R4-23389-00	GUIDE, CABLE GUIA DE CABLE	1				



3GXG200-A240

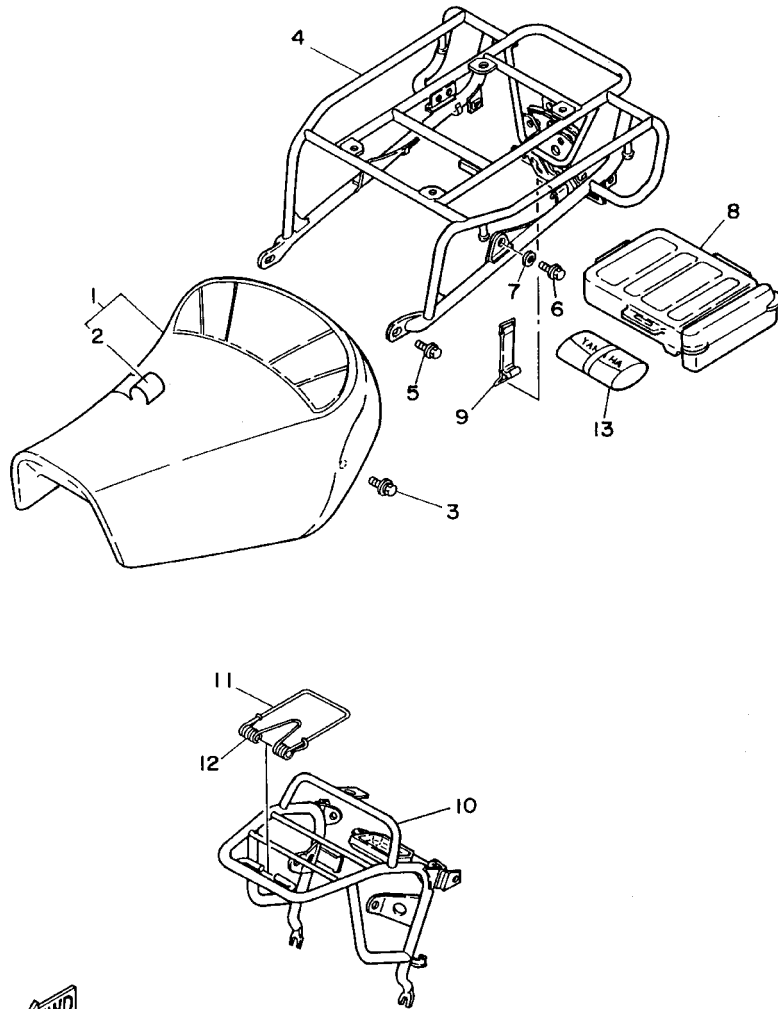
FIG. 24 FUEL TANK

DEPOSITO DE COMBUSTIBLE

REF. NO.	PART NO. CODIGO NO.	DESCRIPTION DESCRIPTION	3GXG				REMARKS OBSERVACION
1	36X-24110-10-02	FUEL TANK COMP. DEPOSITO DE COMBUSTIBLE COMP.	1				UR YNS3
	36X-Y2410-10-02	FUEL TANK COMP. DEPOSITO DE COMBUSTIBLE COMP.	1				UR SBE
2	3GX-24240-10	.GRAPHIC SET .JUEGO DE CALCOMANIAS	1				UR FOR YNS3
	3GX-24240-40	.GRAPHIC SET .JUEGO DE CALCOMANIAS	1				UR FOR SBE
3	4H7-24181-00	DAMPER, LOCATING 1 AMORTIGUADOR DE MONTAJE 1	2				
4	36X-24182-00	DAMPER, LOCATING 2 AMORTIGUADOR DE MONTAJE 2	1				
5	36X-24186-00	WASHER, SPECIAL ARANDELA ESPECIAL	2				
6	95807-06016	BOLT, FLANGE TUERCA DE REBORDE	2				
7	23F-24500-01	FUEL COCK ASSY 1 GRIFO DE COMBUSTIBLE 1	1				
8	4X8-24512-00	.O-RING .EMPAQUE	1				
9	97801-03008	.SCREW, PAN HEAD .TORNILLO	2				
10	3AJ-24523-00	.VALVE PACKING .VALVULA	1				
11	3AJ-24534-00	.SEAL, COCK .SELLO DE GRIFO	1				
12	90149-06011	SCREW TORNILLO DE REGLAJE	2				
13	90202-05193	WASHER, PLATE ARANDELA DE PLANA	2				
14	90445-10638	HOSE (L145) TUBO (L145)	1				
15	90467-09006	CLIP PRESILLA	2				
16	36X-24610-00	CAP ASSY TAPA COMPLETA	1				

FIG. 25 SEAT

ASIENTO

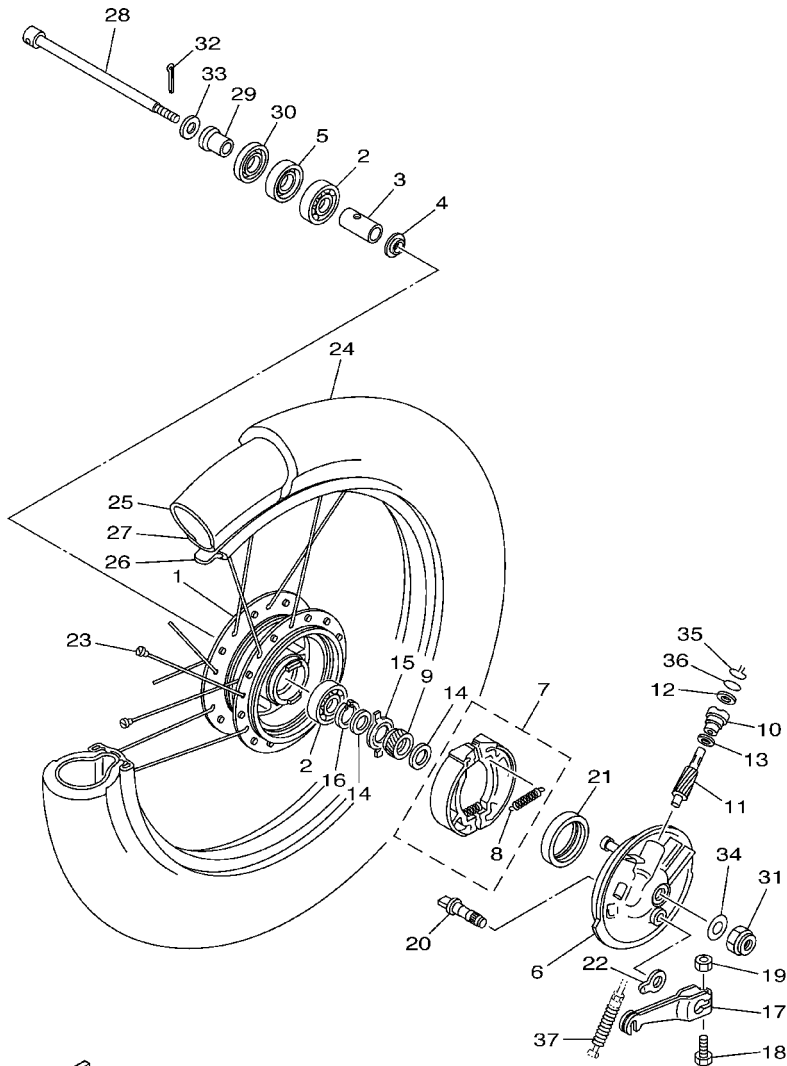


REF. NO.	PART NO. CODIGO NO.	DESCRIPTION DESCRIPTION	3GXG				REMARKS OBSERVACION
1	3GX-24710-31	SINGLE SEAT ASSY ASIENTO SIMPLE COMPLETO	1				
2	3GX-24711-31	.COVER, SINGLE SEAT .CUBIERTA DE ASIENTO SIMPLE	1				
3	90119-06063	BOLT, WITH WASHER TORNILLO CON ARANDELA	2				
4	36X-24810-00-98	CARRIER ASSY PORTADOR COMPLETO	1				UR LGB FOR YNS3
	36X-24810-00-35	CARRIER ASSY PORTADOR COMPLETO	1				UR SL FOR SBE
5	95817-08012	BOLT, FLANGE TUERCA DE REBORDE	2				
6	90105-08141	BOLT, FLANGE TORNILLO	1				
7	90201-08326	WASHER, PLATE ARANDELA PLANA	1				
8	36X-21107-00	TOOL BOX COMP. CAJA DE HERRAMIENTAS COMPL.	1				
9	36X-2811G-00	BAND BANDA	1				
10	36X-24860-00-98	FRONT CARRIER ASSY PORTADOR DELANTERO COMPLETO	1				UR LGB FOR YNS3
	36X-24860-00-35	FRONT CARRIER ASSY PORTADOR DELANTERO COMPLETO	1				UR SL FOR SBE
11	36X-24862-00	CLAMP, CARRIER GRAMPA DE PORTADOR	1				
12	36X-24861-00	SPRING, FRONT CARRIER RESORTE DE PORTADOR DELANTERO	1				
13	36X-28100-00	TOOL KIT JUEGO DE HERRAMIENTAS	1				


36X700-3251

FIG. 26 FRONT WHEEL

RUEDA DELANTERA

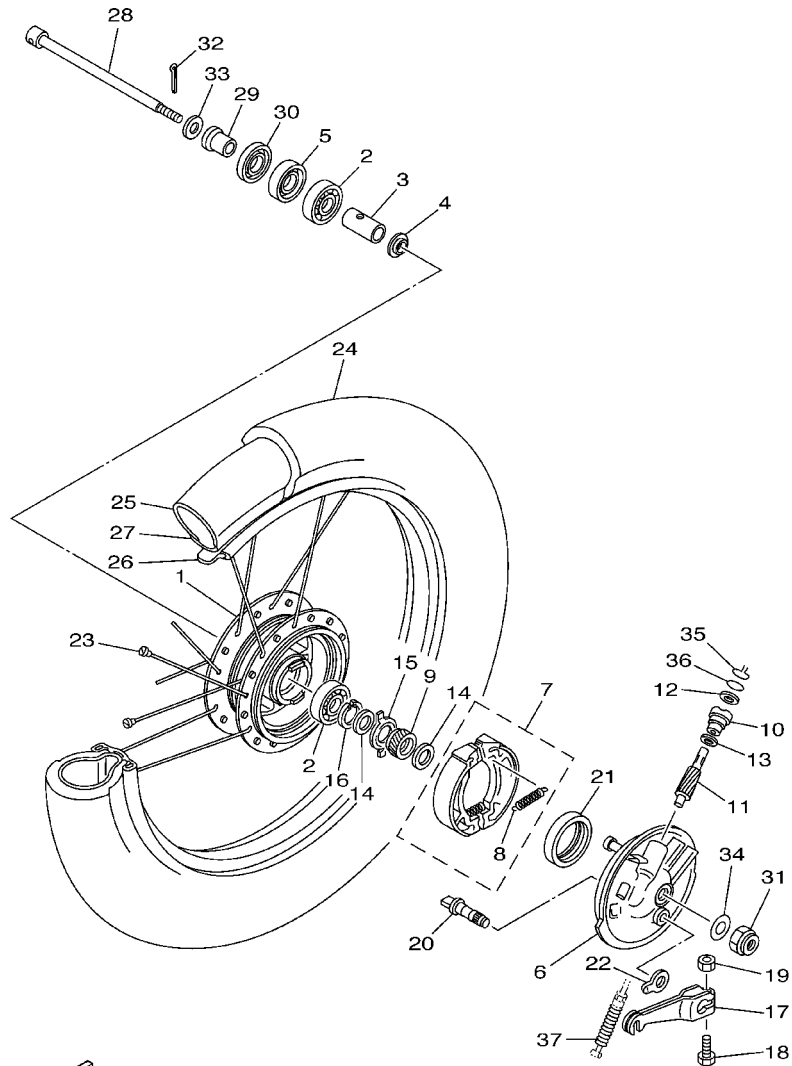


3GXG200-A260

REF. NO.	PART NO. CODIGO NO.	DESCRIPTION DESCRIPTION	3GXG			REMARKS OBSERVACION
1	248-25111-00-35	HUB, FRONT MASA DELANTERA	1			SL
2	93306-30103	BEARING (B6301Z) COJINETE	2			
3	90560-12138	SPACER SEPARADOR	1			
4	109-25315-00	FLANGE, SPACER SEPARADOR	1			
5	93102-18008	OIL SEAL SELLO ACEITE	1			
6	23F-25121-00-35	PLATE, BRAKE SHOE PLACA DE ZAPATA DE FRENO	1			SL
7	4BE-W253E-00	BRAKE SHOE SET JUEGO DE ZAPATA DE FRENO	1			
8	90506-15260	.SPRING, TENSION .RESORTE DE TENSION	2			
9	36X-25135-00	GEAR, DRIVE ENGRANAJE DE TRACCION	1			
10	109-25136-00	BUSH BUJE	1			
11	36X-25138-00	GEAR, METER ENGRANAJE DE MEDIDOR	1			
12	93104-07003	OIL SEAL SELLO ACEITE	1			
13	90201-07076	WASHER, PLATE ARANDELA PLANA	1			
14	90201-20269	WASHER, PLATE ARANDELA PLANA	2			
15	183-25149-00	CLUTCH, METER EMBRAGUE DEL CUENTAKMS	1			
16	99009-20400	CIRCLIP PRESILLA REDONDA	1			
17	558-25155-00	LEVER, CAMSHAFT 1 PALANCA DE ARBOL DE LEVAS 1	1			
18	90101-06278	BOLT TORNILLO	1			
19	95307-06600	NUT TUERCA	1			
20	3Y6-25351-00	CAMSHAFT ARBOL DE LEVAS	1			
21	93102-47297	OIL SEAL SELLO ACEITE	1			
22	23F-2533A-00	PLATE, INDICATOR PLACA INDICADOR	1			
23	3V6-25104-00	SPOKE SET, FRONT JUEGO DE RAYOS DELANTERO	1			
24	94130-195E9	TIRE (3.00-19) NEUMATICO (3.00-19)	1			INOUE
25	94227-19292	TUBE (2.75-19) TUBO (2.75-19)	1			INOUE
26	94327-19111	BAND, RIM (2.75-19) BANDA DE ARO (2.75-19)	1			INOUE
27	94416-19002	RIM (1.60-19) ARO (1.60-19)	1			

FIG. 26 FRONT WHEEL

RUEDA DELANTERA

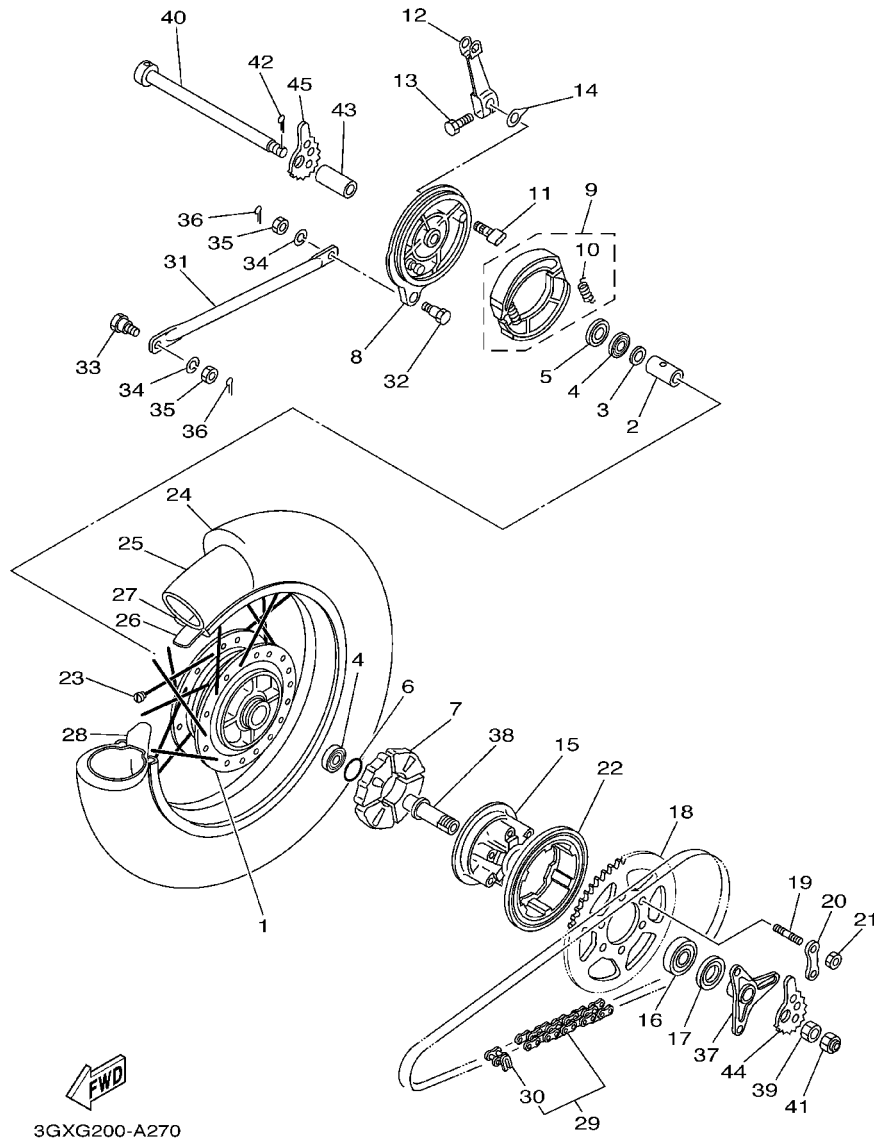


3GXG200-A260

REF. NO.	PART NO. CODIGO NO.	DESCRIPTION DESCRIPTION	3GXG				REMARKS OBSERVACION
28	353-25381-00	AXLE, WHEEL EJE DE RUEDA	1				
29	90387-12265	COLLAR COLLAR	1				
30	2K5-25118-00	COVER, HUB DUST CUBIERTA DE MASA PARA POLVO	1				
31	90171-10004	NUT, CASTLE TUERCA ENTALLADA	1				
32	91401-20020	PIN, COTTER PASADOR DE CHAVETA	1				
33	90201-12749	WASHER, PLATE ARANDELA PLANA	1				
34	92907-10200	WASHER, PLAIN ARANDELA	1				
35	102-25137-00	RING, STOP ANILLO DE TOPE	1				
36	93210-14104	O-RING ANILLO O	1				
37	90501-12792	SPRING, COMPRESSION RESORTE DE COMPRESION	1				

FIG. 27 REAR WHEEL

RUEDA TRASERA



REF. NO.	PART NO. CODIGO NO.	DESCRIPTION DESCRIPTION	3GXG			REMARKS OBSERVACION
1	391-25311-00-35	HUB, REAR MASA TRASERA	1			SL
2	90560-15136	SPACER SEPARADOR	1			
3	183-25315-00	FLANGE, SPACER SEPARADOR	1			
4	93306-20227	BEARING COJINETE	2			
5	93104-22018	OIL SEAL SELLO ACEITE	1			
6	93210-42101	O-RING ANILLO O	1			
7	36X-25364-00	DAMPER AMORTIGUADOR	4			
8	248-25321-00-35	PLATE, BRAKE SHOE PLACA DE ZAPATA DE FRENO	1			SL
9	3FA-W253A-00	BRAKE SHOE SET JUEGO DE ZAPATA DE FRENO	1			
10	90506-15260	SPRING, TENSION RESORTE DE TENSION	2			
11	248-25351-10	CAMSHAFT ARBOL DE LEVAS	1			
12	4V8-25355-00	LEVER, CAMSHAFT PALANCA DE ARBOL DE LEVAS	1			
13	90101-06291	BOLT TORNILLO	1			
14	5T9-2533A-00	PLATE, INDICATOR PLACA INDICADOR	1			
15	31G-25366-00	CLUTCH, HUB EMBRAGUE DE MASA	1			
16	93306-00406	BEARING (B6004Z) COJINETE (B6004Z)	1			NTN
17	93106-26005	OIL SEAL SELLO ACEITE	1			
18	15A-25454-10	SPROCKET, DRIVEN (54T) CORONA (54T)	1			
19	90116-08425	BOLT, STUD ESPARRAGO	6			
20	90215-08160	WASHER, LOCK ARANDELA DE CIERRE	3			
21	90170-08258	NUT TUERCA	6			
22	36X-25327-00	COVER, PLATE CUBIERTA DE PLACA	1			
23	3V6-25304-00	SPOKE SET, REAR JUEGO DE RAYOS TRASEROS	1			
24	94141-185E8	TIRE (4.10-18) NEUMATICO (4.10-18)	1			INOUE
25	94232-18113	TUBE (3.25-18) TUBO (3.25-18)	1			INOUE
26	94325-18081	BAND, RIM (2.50-18) BANDA DE ARO (2.50-18)	1			INOUE
27	94418-18008	RIM (1.85-18) ARO (1.85-18)	1			

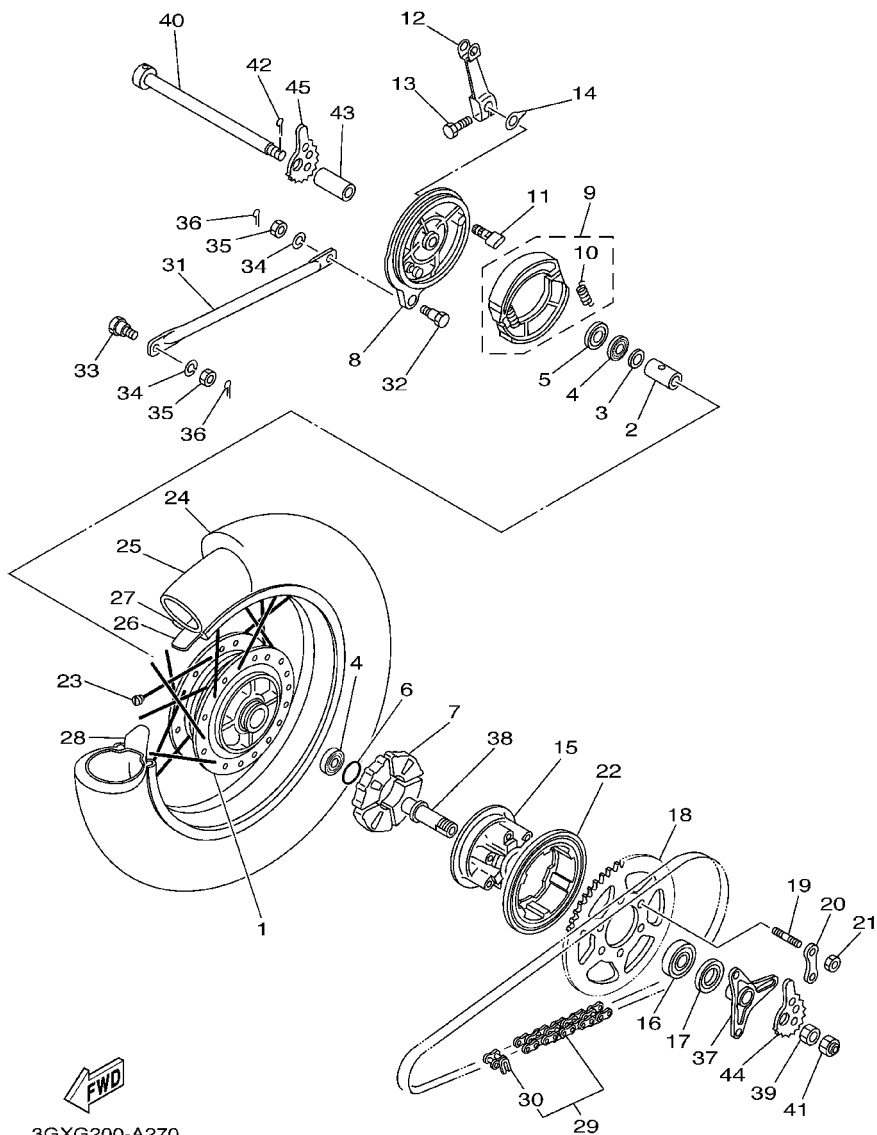
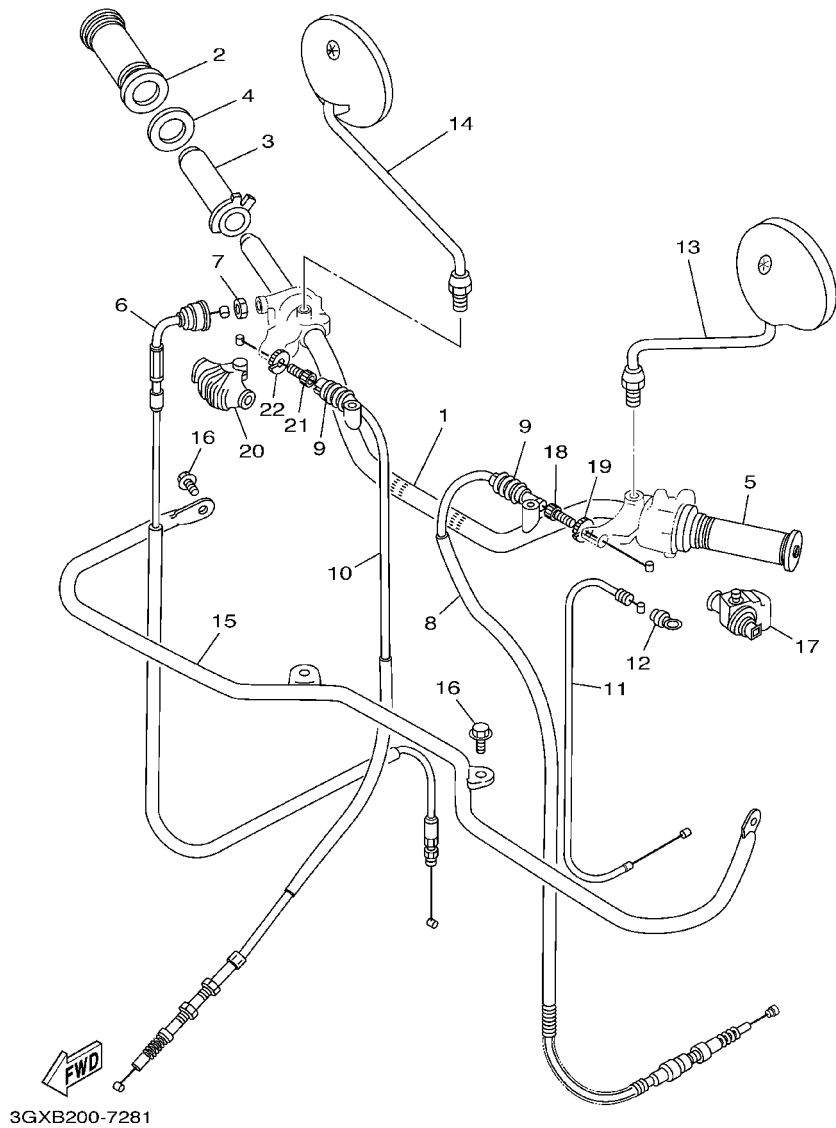


FIG. 27 REAR WHEEL

RUEDA TRASERA

REF. NO.	PART NO. CODIGO NO.	DESCRIPTION DESCRIPTION	3GXG				REMARKS OBSERVACION
28	1T2-25394-00	SPACER, BEAD ESPACIDOR DE BANCADA	1				
29	94580-88122	CHAIN (DID 428HG-122L) CADENA (DID 428HG-122L)	1				
30	94680-88001	.JOINT, CHAIN (DID 428HG) .CONECTOR DE CADENA (DID 428HG)	1				
31	3V6-25371-00	BAR, TENSION BARRA TENSORA	1				
32	90109-08063	BOLT PERNO	1				
33	90109-08368	BOLT PERNO	1				
34	92907-08100	WASHER, SPRING ARANDELA	2				
35	95307-08700	NUT TUERCA	2				
36	91401-20012	PIN, COTTER PASADOR DE CHAVETA	2				
37	36X-25386-00	COLLAR, SPROCKET AXLE COLLAR EJE DE RUEDA DENTADA	1				
38	36X-25387-00	AXLE, SPROCKET EJE DE CORONA	1				
39	90170-20224	NUT TUERCA	1				
40	2K6-25381-00	AXLE, WHEEL EJE DE RUEDA	1				
41	90171-14020	NUT, CASTLE TUERCA ENTALLADA	1				
42	91401-30030	PIN, COTTER PASADOR DE CHAVETA	1				
43	90387-155J5	COLLAR COLLAR	1				
44	3V6-25388-00	PULLER, CHAIN 1 TIRADOR DE CADENA 1	1				
45	3V6-25389-00	PULLER, CHAIN 2 TIRADOR DE CADENA 2	1				

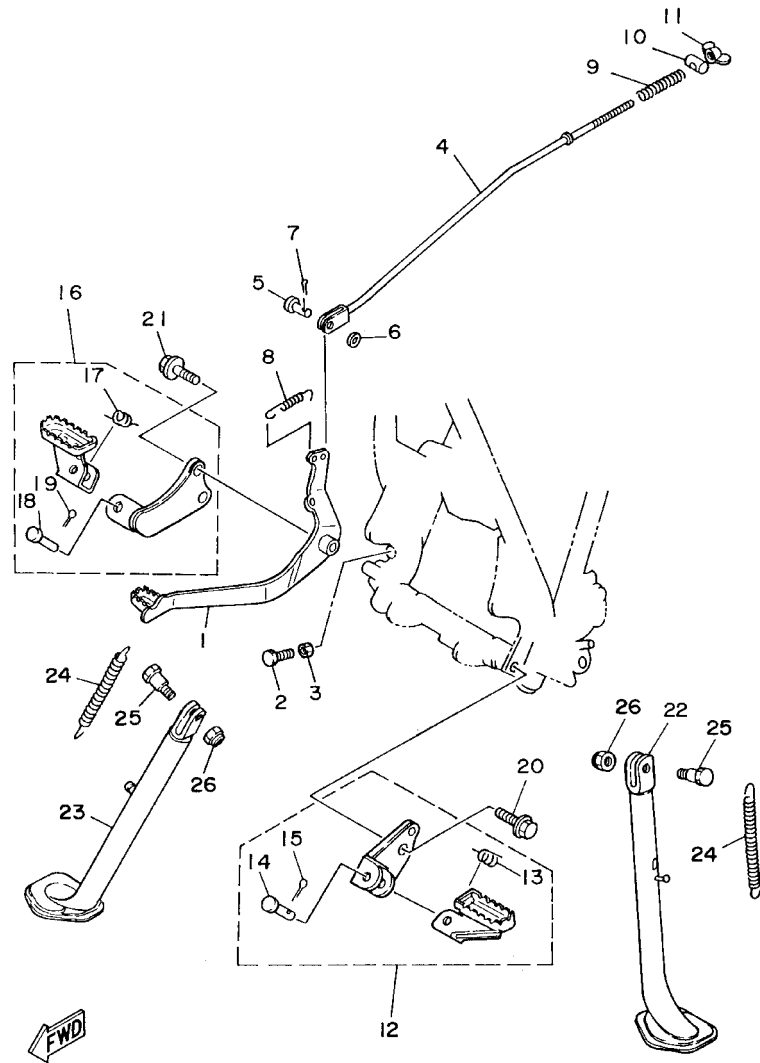
FIG. 28 STEERING HANDLE. CABLE MANUBRIO. CABLE



REF. NO.	PART NO. CODIGO NO.	DESCRIPTION DESCRIPTION	3GXB			REMARKS OBSERVACION
1	36X-26111-01	HANDLEBAR MANUBRIO	1			UR YB FOR YNS3
	36X-26111-11	HANDLEBAR MANUBRIO	1			UR SL FOR SBE
2	3V6-26242-00	GRIP (RIGHT) EMPUNADURA (MD)	1			
3	434-26243-00	TUBE, THROTTLE GUIDE TUBO DE GUIA DE OBTURADOR	1			
4	1M1-26249-01	RING, LEAF ANILLO DE FLEJE	1			
5	3V6-26241-00	GRIP EMPUNADURA	1			
6	36X-26311-01	CABLE, THROTTLE 1 CABLE DE ACELERADOR 1	1			
7	90170-10038	NUT TUERCA	1			
8	1RH-26335-00	CABLE, CLUTCH CABLE DE EMBRAGUE	1			
9	1E6-26342-00	BOOT, CABLE FUNDA DE CABLE	2			
10	36X-26341-01	CABLE, BRAKE CABLE DE FRENO	1			
11	36X-26331-00	CABLE, STARTER 1 CABLE DE ARRANQUE 1	1			
12	5Y1-26339-00	BOOT FUNDA	1			
13	1Y1-26290-50	BACK MIRROR ASSY (L.H) ESPEJO COMPLETO (DERECHO)	1			
14	1Y1-26290-60	BACK MIRROR ASSY (R.H) ESPEJO COMPLETO (DERECHO)	1			
15	36X-26123-01	GUARD, LEVER GUARDA DE PALANCA	1			UR LGB FOR YNS3
	36X-26123-11	GUARD, LEVER GUARDA DE PALANCA	1			UR SL FOR SBE
16	95807-08016	BOLT, FLANGE TUERCA DE REBORDE	4			
17	36X-26372-00	COVER, HANDLE LEVER 1 CUBIERTA DE PALANCA DE MANUB 1	1			
18	90123-08046	BOLT PERNO	1			
19	90179-08148	NUT TUERCA	1			
20	1E6-26372-00	COVER, HANDLE LEVER 1 CUBIERTA DE PALANCA DE MANUB 1	1			
21	90123-08046	BOLT PERNO	1			
22	90179-08148	NUT TUERCA	1			

FIG. 29 STAND. FOOTREST

SOPORTE. APOYAPIE

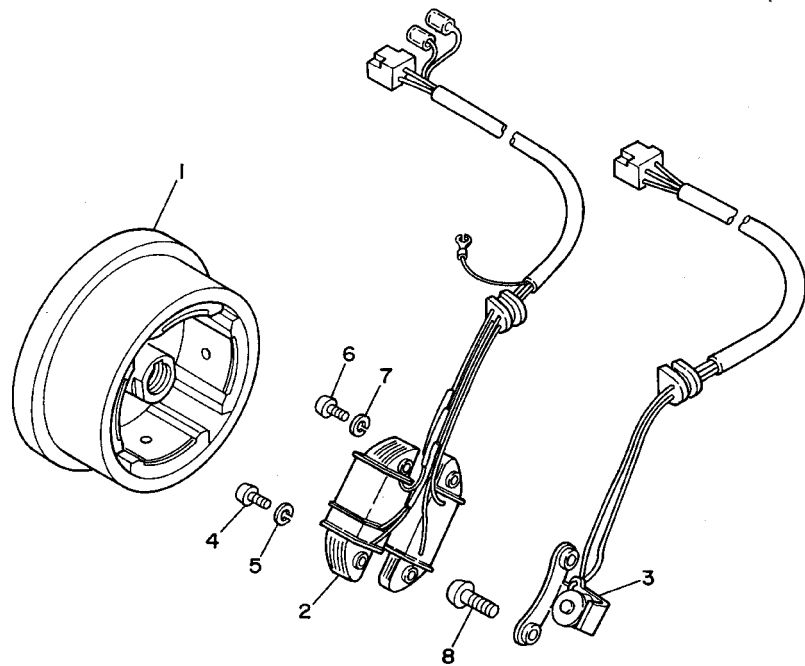


36X700-3290

REF. NO.	PART NO. CODIGO NO.	DESCRIPTION DESCRIPTION	3GXG				REMARKS OBSERVACION
1	36X-27211-00-90	PEDAL, BRAKE PEDAL DE FRENO	1				ZK
2	97007-06020	BOLT PERNO	1				
3	95307-06700	NUT TUERCA	1				
4	36X-27231-00	ROD, BRAKE VARILLA DE FRENO	1				
5	90240-06076	PIN, CLEVIS PASADOR CON HOYO	1				
6	92907-06200	WASHER ARANDELA	1				
7	91401-20012	PIN, COTTER PASADOR DE CHAVETA	1				
8	90506-14343	SPRING, TENSION RESORTE DE TENSION	1				
9	90501-10245	SPRING, COMPRESSION RESORTE DE COMPRESION	1				
10	90249-12008	PIN PASADOR	1				
11	90175-06013	NUT, WING TUERCA MARIPOSA	1				
12	36X-27410-00-90	FRONT FOOTREST ASSY (LEFT) APOYAPIE DELANTERO (MI)	1				ZK
13	90508-20023	SPRING, TORSION RESORTE DE TORSION	1				
14	91701-08038	PIN, CLEVIS PASADOR DE ABRAZADERA	1				
15	91401-25015	PIN, COTTER PASADOR DE CHAVETA	1				
16	36X-27420-00-90	FRONT FOOTREST ASSY (RIGHT) APOYAPIE DELANTERO (MD)	1				ZK
17	90508-20023	SPRING, TORSION RESORTE DE TORSION	1				
18	91701-08038	PIN, CLEVIS PASADOR DE ABRAZADERA	1				
19	91401-25015	PIN, COTTER PASADOR DE CHAVETA	1				
20	95827-12025	BOLT, FLANGE TUERCA DE REBORDE	1				
21	90105-10058	BOLT, FLANGE TORNILLO	2				
22	36X-27311-01	STAND, SIDE PUNTAL LATERAL	1				
23	36X-27311-11	STAND, SIDE PUNTAL LATERAL	1				
24	90506-28100	SPRING, TENSION RESORTE DE TENSION	2				
25	90109-10473	BOLT PERNO	2				
26	90185-10037	NUT, SELF-LOCKING TUERCA AUTOBLOCANTE	2				

FIG. 30 GENERATOR

GENERADOR

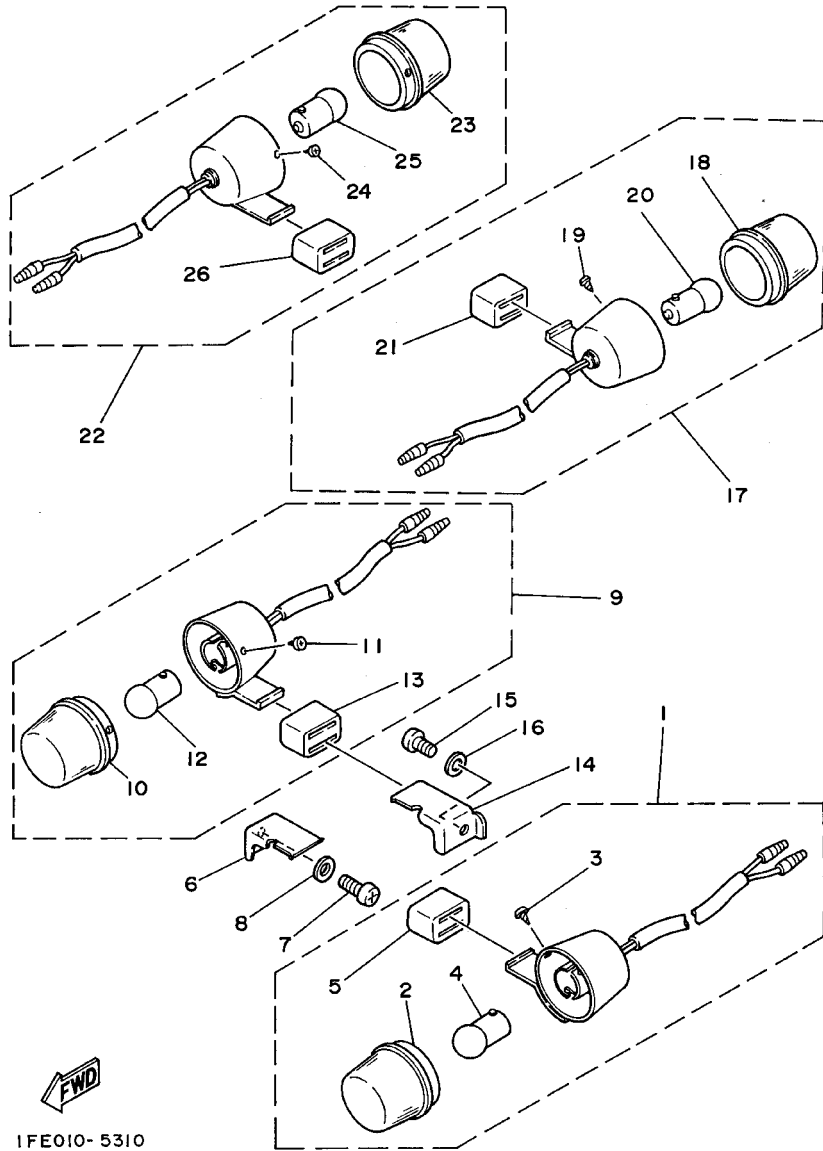


REF. NO.	PART NO. CODIGO NO.	DESCRIPTION DESCRIPTION	3GXG				REMARKS OBSERVACION
1	36X-85550-M0	ROTOR ASSY ROTOR COMPLETO	1				
2	36X-81410-M0	STATOR ASSY ESTATOR COMPLETO	1				
3	15A-85580-M0	COIL, PULSER BOBINA DE PULSACION	1				
4	98507-05030	SCREW, PAN HEAD TORNILLO DE CABEZA CON PLANA	2				
5	92907-05100	WASHER, SPRING ARANDELA	2				
6	98507-05025	SCREW, PAN HEAD TORNILLO DE CABEZA CON PLANA	2				
7	92907-05100	WASHER, SPRING ARANDELA	2				
8	98507-06020	SCREW, PAN HEAD TORNILLO DE CABEZA CON PLANA	2				

 36X700-3301

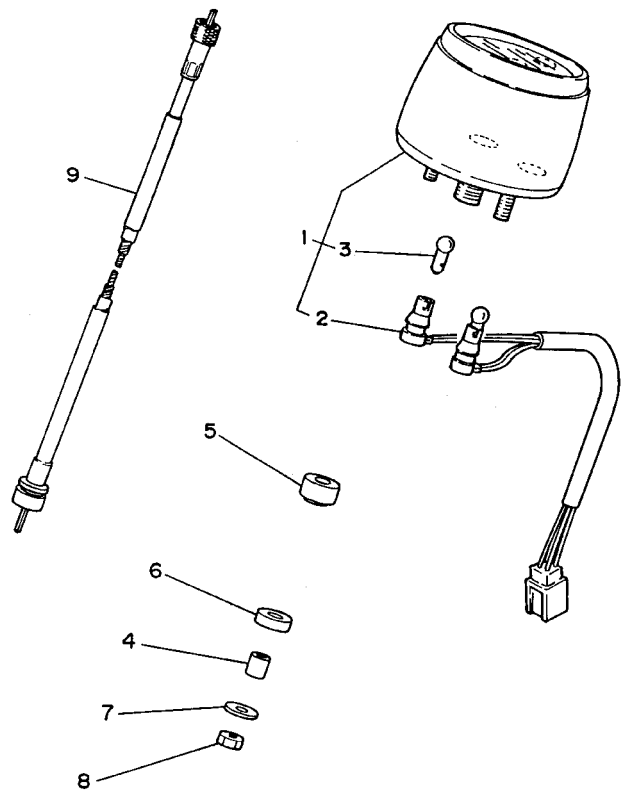
FIG. 31 FLASHER LIGHT

LUZ DE DESTELLADOR



1FE010-5310

REF. NO.	PART NO. CODIGO NO.	DESCRIPTION DESCRIPTION	3GXG				REMARKS OBSERVACION
1	36X-83310-10	FRONT FLASHER LIGHT ASSY 1 DESTELLADOR DE LUZ DELANT. 1	1				
2	36X-83312-00	.LENS, FLASHER .LENTE DE DESTELLADOR	1				
3	97706-30108	.SCREW, TAPPING .TORNILLO ROSCA HEMBRA	1				
4	185-83311-10	.BULB (6V-8W) .BOMBILLA DE DESTELLADOR (6V-8W)	1				
5	36X-83321-00	.DAMPER, FLASHER 1 .AMORTIGUADOR DE DESTELLADOR 1	1				
6	36X-83318-00	STAY, FLASHER 1 SOPORTE DE DESTELLADOR 1	1				
7	98507-06016	SCREW, PAN HEAD TORNILLO DE CABEZA CON PLANA	1				
8	92907-06600	WASHER, PLATE ARANDELA	1				
9	36X-83320-10	FRONT FLASHER LIGHT ASSY 2 DESTELLADOR DE LUZ DELANT.	1				
10	36X-83312-00	.LENS, FLASHER .LENTE DE DESTELLADOR	1				
11	97706-30108	.SCREW, TAPPING .TORNILLO ROSCA HEMBRA	1				
12	185-83311-10	.BULB (6V-8W) .BOMBILLA DE DESTELLADOR (6V-8W)	1				
13	36X-83321-00	.DAMPER, FLASHER 1 .AMORTIGUADOR DE DESTELLADOR 1	1				
14	36X-83328-00	STAY, FLASHER 2 SOPORTE DE DESTELLADOR 2	1				
15	98507-06016	SCREW, PAN HEAD TORNILLO DE CABEZA CON PLANA	1				
16	92907-06600	WASHER, PLATE ARANDELA	1				
17	36X-83330-10	REAR FLASHER LIGHT ASSY 1 DESTELLADOR DE LUZ TRAS.COMPL. 1	1				
18	36X-83312-00	.LENS, FLASHER .LENTE DE DESTELLADOR	1				
19	97706-30108	.SCREW, TAPPING .TORNILLO ROSCA HEMBRA	1				
20	185-83311-10	.BULB (6V-8W) .BOMBILLA DE DESTELLADOR (6V-8W)	1				
21	36X-83321-00	.DAMPER, FLASHER 1 .AMORTIGUADOR DE DESTELLADOR 1	1				
22	36X-83340-10	FLASHER LIGHT ASSY 2 DESTELLADOR DE LUZ COMPL. 2	1				
23	36X-83312-00	.LENS, FLASHER .LENTE DE DESTELLADOR	1				
24	97706-30108	.SCREW, TAPPING .TORNILLO ROSCA HEMBRA	1				
25	185-83311-10	.BULB (6V-8W) .BOMBILLA DE DESTELLADOR (6V-8W)	1				
26	36X-83321-00	.DAMPER, FLASHER 1 .AMORTIGUADOR DE DESTELLADOR 1	1				



3GX700-8320

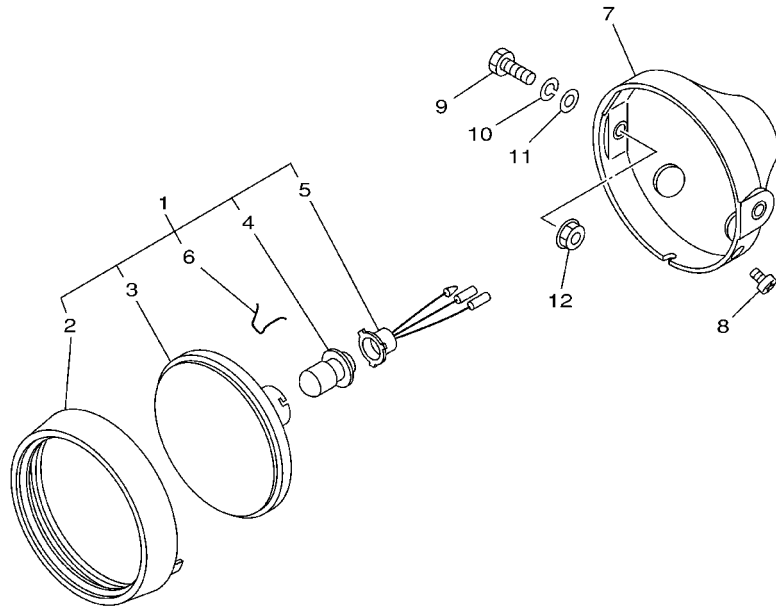
FIG. 32 METER

MEDIDOR

REF. NO.	PART NO. CODIGO NO.	DESCRIPTION DESCRIPTION	3GXG				REMARKS OBSERVACION
1	3HA-83510-00	SPEEDOMETER ASSY VELOCIMETRO COMPL.	1				
2	2W0-83520-00	.SOCKET CORD ASSY .ENCASTRE COMPLETO	1				
3	4N0-83516-00	.BULB (6V-3W) .AMPOLLETA (6V-3W)	2				
4	90387-067V1	COLLAR COLLAR	2				
5	1M3-83513-00	DAMPER AMORTIGUADOR	2				
6	355-83526-00	DAMPER 2 AMORTIGUADOR 2	2				
7	355-83524-00	WASHER, SPECIAL ARANDELA ESPECIAL	2				
8	95307-06600	NUT TUERCA	2				
9	36X-83550-00	SPEEDOMETER CABLE ASSY CABLE DE VELOCIMETRO COMPLETO	1				

FIG. 33 HEADLIGHT

FARO DELANTERO



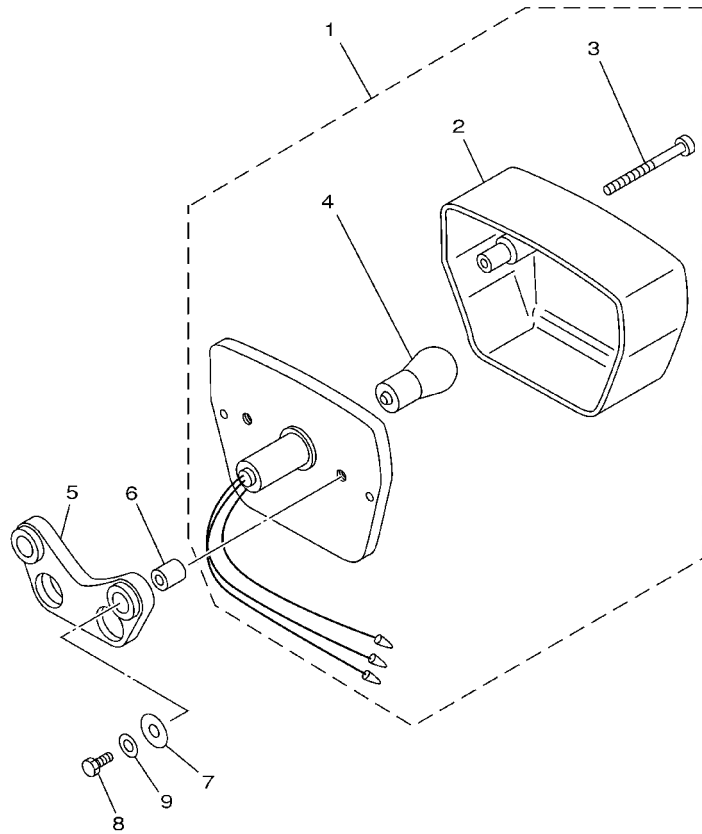
REF. NO.	PART NO. CODIGO NO.	DESCRIPTION DESCRIPTION	3GXG				REMARKS OBSERVACION
1	3M7-84110-00	HEADLIGHT UNIT ASSY UNIDAD FARO DELANTERO COMPLETO	1				
2	202-84315-00	.RIM, HEADLIGHT .ARO DE FARO DELANTERO	1				
3	276-84120-00	.LENS ASSY .LENTES COMPLETO	1				
4	248-84114-00	.BULB, HADLIGHT (6V-25/25W) .AMPOLLETA DE FARO DELANTERO	1				YELLOW
5	317-84112-30	.SOCKET .ENCASTRE	1				
6	195-84324-00	.SPRING, REFLECTOR .RESORTE DE REFLECTOR	3				
7	3M7-84130-00	BODY ASSY, HEADLIGHT CUERPO COMPL FARO DELANTERO	1				
8	98507-05012	SCREW, PAN HEAD TORNILLO DE CABEZA CON PLANA	1				
9	97007-08025	BOLT PERNO	2				
10	92907-08100	WASHER, SPRING ARANDELA	2				
11	92907-08600	WASHER, PLATE ARANDELA	2				
12	95707-08500	NUT, FLANGE TUERCA DE BRIDA	2				



3GXB200-7330

FIG. 34 TAILLIGHT

LUZ DE COLA



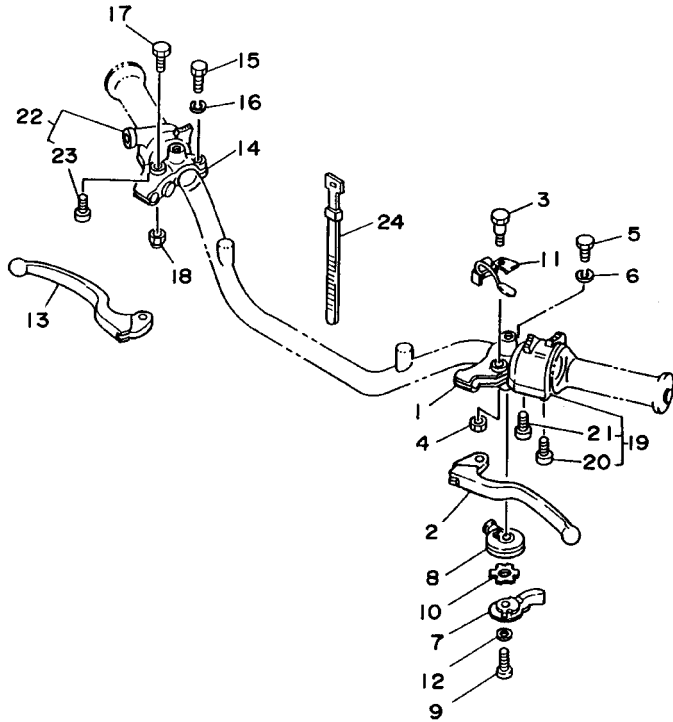
REF. NO.	PART NO. CODIGO NO.	DESCRIPTION DESCRIPTION	3GXB				REMARKS OBSERVACION
1	36X-84510-00	TAILLIGHT UNIT ASSY FARO TRASERO COMPLETO	1				
2	1Y1-84521-00	.LENS, TAILLIGHT .LENTE DE FARO TRASERO	1				
3	98511-03045	.SCREW, PAN HEAD .TORNILLO DE CABEZA CON PLANA	2				
4	122-84514-30	.BULB (6V-17/5.3W) .AMPOLLETA (6V-17/5.3W)	1				
5	36X-84527-00	DAMPER AMORTIGUADOR	1				
6	90387-05563	COLLAR COLLAR	2				
7	90201-054K4	WASHER, PLATE ARANDELA PLANA	2				
8	97007-05020	BOLT PERNO	2				
9	92907-05600	WASHER, PLATE ARANDELA	2				



3GXB200-7340

FIG. 35 HANDLE SWITCH. LEVER

INTERRUPTOR DE MANIJA. PALANCA



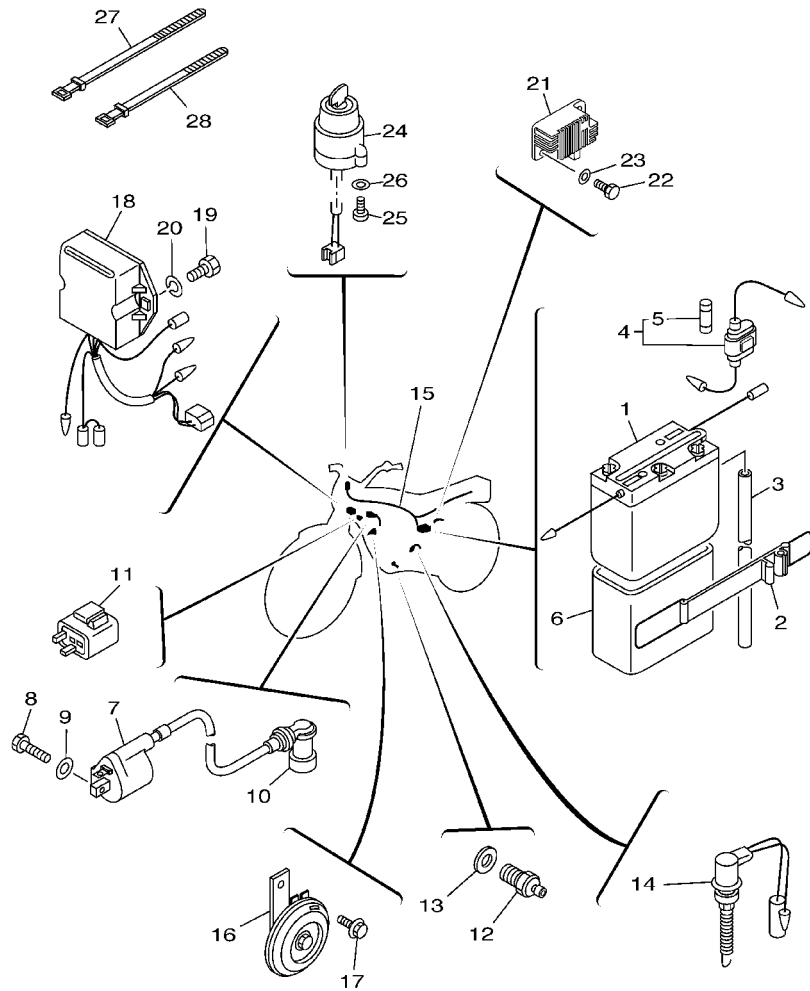
REF. NO.	PART NO. CODIGO NO.	DESCRIPTION DESCRIPTION	3GXG				REMARKS OBSERVACION
1	5Y1-82911-01	HOLDER, LEVER 1 SOPORTE DE LEVA 1	1				
2	4GY-83912-00	LEVER 1 PALANCA 1	1				
3	90109-06799	BOLT PERNO	1				
4	95607-06100	NUT, U TUERCA AUTOBLOCANTE	1				
5	97007-06022	BOLT PERNO	1				
6	92907-06100	WASHER, SPRING ARANDELA	1				
7	5Y1-83941-00	LEVER, STARTER PALANCA DE ARRANQUE	1				
8	5Y1-83942-00	COVER, STARTER CUBIERTA DE ARRANQUE	1				
9	98507-06035	SCREW, PAN HEAD TORNILLO DE CABEZA CON PLANA	1				
10	90209-10131	WASHER ARANDELA DE SEPARACION	1				
11	36X-83965-00	LEVER, LOCK PALANCA DE CIERRE	1				
12	92907-06200	WASHER ARANDELA	1				
13	23X-83922-00	LEVER 2 PALANCA 2	1				
14	361-82921-31	HOLDER, LEVER 2 SOPORTE DE LEVA 2	1				
15	97007-06022	BOLT PERNO	1				
16	92907-06100	WASHER, SPRING ARANDELA	1				
17	90109-06799	BOLT PERNO	1				
18	95607-06100	NUT, U TUERCA AUTOBLOCANTE	1				
19	36X-83972-01	SWITCH, HANDLE 4 INTERRUPTOR DE MANIJA 4	1				
20	98506-05025	SCREW, PAN HEAD TORNILLO DE CABEZA CON PLANA	1				
21	98506-05030	SCREW, PAN HEAD TORNILLO DE CABEZA CON PLANA	1				
22	18G-83976-00	SWITCH, HANDLE 1 INTERRUPTOR MANIJA 1	1				
23	90157-05027	SCREW, PAN HEAD TORNILLO CABEZA CONICA PLANA	2				
24	437-83936-01	BAND, SWITCH CORD BANDA DE CABLE DE INTERRUPTOR	4				



3GX9700-6350

FIG. 36 ELECTRICAL 1

EQUIPO ELECTRICO 1

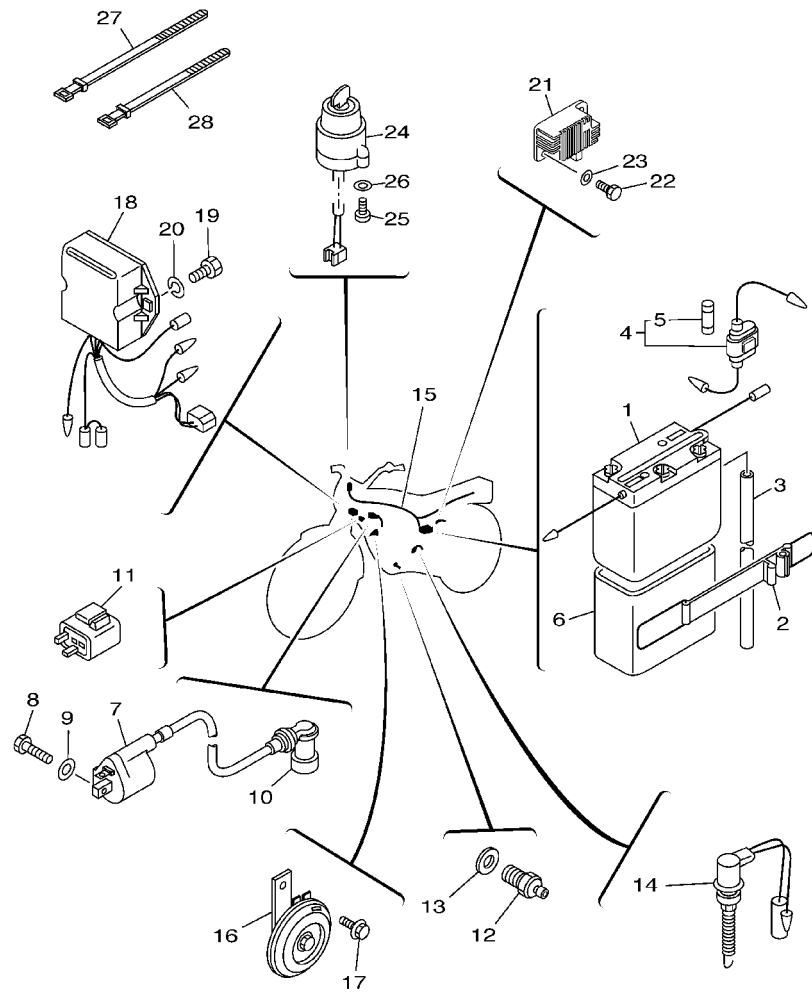


REF. NO.	PART NO. CODIGO NO.	DESCRIPTION DESCRIPTION	3GXG				REMARKS OBSERVACION
1	558-82110-12	BATTERY ASSY BATERIA COMPLETA	1				
2	36X-82131-00	BAND, BATTERY TIRANTE DE BATERIA	1				
3	90445-08171	HOSE (L375) TUBO (L375)	1				
4	55K-82150-01	FUSE HOLDER ASSY PORTA-FUSIBLES COMPLETO	1				
5	116-82151-00	.FUSE (10A) .FUSIBLE (10A)	2				
6	36X-82122-00	SEAT, BATTERY ASIENTO DE BATERIA	1				
7	3KJ-82310-10	IGNITION COIL ASSY BOBINA DE ENCENDIDO COMPLETA	1				
8	97007-06020	BOLT PERNO	2				
9	92907-06600	WASHER, PLATE ARANDELA	2				
10	55X-82370-00	PLUG CAP ASSY TAPON DE BUJIA COMPLT.	1				
11	36X-83350-10	FLASHER RELAY ASSY RELE DE DESTELLADOR COMPL.	1				
12	4KM-82540-00	NEUTRAL SWITCH ASSY INTERRUPTOR NEUTRAL COMPL	1				
13	90430-10148	GASKET JUNTA	1				
14	2F1-82530-02	STOP SWITCH ASSY INTERRUPTOR DE PARADA COMPLETO	1				
15	36X-82590-01	WIRE HARNESS ASSY CONJUNTO DE CABLES	1				
16	36X-83371-11	HORN BOCINA	1				
17	95807-06012	BOLT, FLANGE TUERCA DE REBORDE	1				
18	12V-85540-10	C.D.I. UNIT ASSY UNIDAD C.D.I. COMPLETA	1				
19	97007-06016	BOLT PERNO	2				
20	92907-06100	WASHER, SPRING ARANDELA	2				
21	18A-81960-60	RECTIFIER & REGULATOR ASSY RECTIFICADOR Y REGULADOR	1				STANLEY
22	97007-05012	BOLT PERNO	2				
23	92907-05600	WASHER, PLATE ARANDELA	2				
24	36X-82510-02	MAIN SWITCH ASSY CONJUNTO DE LLAVE IGNICION	1				
25	98507-05012	SCREW, PAN HEAD TORNILLO DE CABEZA CON PLANA	2				
26	92907-05600	WASHER, PLATE ARANDELA	2				
27	437-83936-11	BAND, SWITCH CORD BANDA DE CABLE DE INTERRUPTOR	1				

FWD
3GXE200-9361

FIG. 36 ELECTRICAL 1

EQUIPO ELECTRICO 1



REF. NO.	PART NO. CODIGO NO.	DESCRIPTION DESCRIPTION	3GXX					REMARKS OBSERVACION
28	3TB-83936-00	BAND, SWITCH CORD BANDA DE CABLE DE INTERRUPTOR	3					

FWD
3GXE200-9361

NUMERICAL INDEX
INDICE NUMERICO

PART NO. CODIGO NO.	REF. NO.	PART NO. CODIGO NO.	REF. NO.	PART NO. CODIGO NO.	REF. NO.	PART NO. CODIGO NO.	REF. NO.	PART NO. CODIGO NO.	REF. NO.	PART NO. CODIGO NO.	REF. NO.
3FA-W253A-00	27 - 9	4FM-12213-00	5 - 11	36X-14752-02	9 - 12	24W-17131-00	14 - 5	3GX-2173F-30	19 - 10	1U6-23168-M0	23 - 19
4BE-W253E-00	26 - 9	5H0-12231-00	5 - 8	4BD-14766-00	9 - 4	36X-17141-01	14 - 2	3M7-21746-00	19 - 4		23 - 38
36X-Y2410-10-02	24 - 1	5N0-12241-00	5 - 9		9 - 9	36X-17151-00	14 - 6	36X-2177F-00	19 - 11	36X-23170-00	23 - 8
36X-11102-03	1 - 1	36X-12283-00	1 - 25	36X-1490J-00	8 - 5	36X-17211-00	14 - 18	36X-22110-00-35	20 - 1		23 - 27
5H0-1111F-00	1 - 20	36X-12288-00	5 - 15	36X-1490K-00	8 - 27	36X-17221-01	14 - 12	15A-22123-00	20 - 2	1W1-23173-L0	23 - 7
5H0-11133-11	1 - 2	36X-12292-00	1 - 24	36X-14901-01	8 - 1	24W-17231-00	14 - 14	36X-22126-00	20 - 6		23 - 26
15A-11161-01	2 - 9	5H0-13300-02	6 - 1	36X-14933-01	8 - 4	36X-17241-01	14 - 15	36X-22126-10	20 - 7	278-23181-50	23 - 10
15A-11162-00	2 - 7	36X-13324-00	6 - 17	25G-14937-00	8 - 31	36X-17251-00	14 - 13	401-22127-00	20 - 12		23 - 29
5H0-11162-00	2 - 8	5H0-13326-01	6 - 2	36X-14940-00	8 - 23	15A-17402-01	14 - 11	1W1-22128-00	21 - 8	3YF-23181-00	23 - 40
36X-11166-00	10 - 11	4BE-13329-01	6 - 4	36X-14941-42	8 - 14	36X-17411-00	14 - 1	401-22128-01	20 - 8	36X-23191-10	23 - 11
371-11167-01	10 - 3	51Y-13411-00	6 - 6	46X-14984-00	8 - 11	5H0-17456-00	14 - 26	36X-22141-01	20 - 10		23 - 30
1NU-11181-00	1 - 6	5H0-13440-00	6 - 10	4G0-14985-00	8 - 18	36X-18111-00	16 - 8	36X-22151-00	20 - 37	36X-23192-00	23 - 12
3RW-11185-00	1 - 12	3GX-13447-00	6 - 11	3F7-14991-00	8 - 13	132-18113-01	16 - 9	36X-22189-00	20 - 35		23 - 31
5H0-11186-00	1 - 15	24W-13512-00	7 - 17	256-14997-00	8 - 6	5H0-18120-02	16 - 1	36X-22210-20	21 - 1	4V2-23194-L0	23 - 13
36X-11187-00	1 - 16	16G-13569-00	7 - 3	16G-15100-03	10 - 1	4G0-18140-00	15 - 8	1YW-22216-00	21 - 4		23 - 32
36X-11310-00	2 - 1	1HX-13575-00	7 - 6	5H0-15351-00	6 - 8	5H0-18185-01	15 - 4	3R4-22226-00	21 - 2	36X-2331E-00	22 - 4
5LB-11351-00	2 - 3	36X-13586-01	7 - 1	3Y1-15361-00	11 - 23	4JG-18511-00	15 - 11	36X-22310-00-35	20 - 13	3R9-23318-00	22 - 17
15A-11400-00	3 - 1	36X-1410A-00	8 - 10	3Y1-15363-00	11 - 21	4JG-18512-01	15 - 12	148-22315-00	20 - 19	3Y1-23319-00	22 - 15
15A-11412-09	3 - 2	36X-14105-00	8 - 2	36X-15378-00	11 - 24	36X-18513-00	15 - 10	36X-22318-00	20 - 27	36X-23340-00-33	23 - 39
5H0-11422-00	3 - 3	25G-14107-20	8 - 22	36X-15411-00	11 - 1	3GX-18531-00	15 - 13	36X-22323-00	20 - 25	3R4-23389-00	23 - 41
15A-11454-00	3 - 22	22F-14126-00	8 - 7	36X-15421-01	11 - 13	3GX-18535-00	15 - 14	36X-22324-00	20 - 23	36X-23389-00	22 - 3
5H0-11496-00	3 - 13	812-14137-00	8 - 8	36X-15431-01	11 - 15	36X-18540-00	15 - 1	36X-22325-00	20 - 22	156-23411-00	22 - 1
5H0-11531-00	3 - 21	4G0-14142-35	8 - 12	36X-15441-00	2 - 10	136-18542-00	15 - 2	36X-22327-00	20 - 30	22F-23411-01	22 - 9
5H0-11536-00	3 - 16	36X-14146-00	8 - 20	15A-15451-02	11 - 2	36X-21107-00	25 - 8	36X-22358-00	20 - 20	156-23412-00	22 - 7
15A-11603-00	3 - 9	137-14153-00	8 - 15	4BE-15462-00	11 - 16	3GX-21110-00-33	17 - 1	36X-23102-10	23 - 1	22F-23412-01	22 - 10
15A-11605-00	3 - 9	36X-14153-00	8 - 17	36X-1561A-00	12 - 21	36X-21287-00	17 - 17	36X-23103-10	23 - 20	36X-23416-00	22 - 12
15A-11607-00	3 - 9	36X-14169-00	8 - 9	36X-1561G-00	12 - 27	36X-21315-00	17 - 7	36X-23106-00-35	23 - 21	36X-23435-00	22 - 21
36X-11631-00-A0	3 - 8	537-14186-00	8 - 21	36X-15620-01	12 - 15	36X-21316-00	17 - 2	36X-23107-00-35	23 - 2	1E6-23441-10-98	22 - 24
15A-11633-00	3 - 10	36X-14191-00	8 - 26	36X-15621-02	12 - 16	36X-21471-00	17 - 15	36X-23110-00	23 - 6	164-23462-00	22 - 2
36X-11636-00	3 - 8	21V-14196-00	8 - 30	36X-15641-00	12 - 8	36X-21471-20	17 - 15		23 - 25	36X-24110-10-02	24 - 1
36X-11638-00	3 - 8	36X-14197-00	8 - 25	15A-15651-01	12 - 12	36X-21485-00	17 - 16	1U6-23111-M1	23 - 17	4H7-24181-00	24 - 3
15A-11651-00	3 - 6	3G2-14231-25	8 - 3	36X-15660-01	12 - 1	36X-21511-40	18 - 1		23 - 36	36X-24182-00	24 - 4
5H0-11681-00	3 - 4	620-14231-74	8 - 16	15A-15666-00	12 - 4	36X-21511-60	18 - 1	240-23114-00	23 - 18	36X-24186-00	24 - 5
5H0-12111-01	4 - 1	36X-14401-00	7 - 7	401-15676-00	12 - 3	36X-21521-00	18 - 4		23 - 37	3GX-24240-10	24 - 2
4G0-12113-01	4 - 4	36X-14412-00	7 - 9	36X-16111-00	13 - 1	36X-21522-00	18 - 5	36X-23118-00	23 - 16	3GX-24240-40	24 - 2
4G0-12114-01	4 - 5	36X-14437-00	7 - 13	36X-16150-00	13 - 5	36X-21611-20	18 - 9		23 - 35	23F-24500-01	24 - 7
4G0-12116-01	4 - 3	36X-14451-00	7 - 10	5H0-16154-00	13 - 6	36X-21611-40	18 - 9	36X-23141-00	23 - 14	4X8-24512-00	24 - 8
4G0-12117-00	4 - 7	36X-14452-00	7 - 12	36X-16321-00	13 - 18	36X-21621-00	18 - 11		23 - 33	3AJ-24523-00	24 - 10
4G0-12118-00	4 - 8	36X-14453-01	7 - 8	537-16321-00	13 - 8	36X-21622-00	18 - 12	3R2-23144-00	23 - 5	3AJ-24534-00	24 - 11
5H0-12119-00	4 - 6	36X-14458-00	7 - 11	137-16324-00	13 - 9	36X-21629-01	18 - 13		23 - 24	36X-24610-00	24 - 16
5H0-12121-01	4 - 2	36X-14468-00	7 - 14	5H0-16351-00	13 - 10	36X-21711-20	19 - 1	1T3-23145-00	23 - 4	3GX-24710-31	25 - 1
5H0-12146-00	4 - 11	36X-14611-01	9 - 1	5H0-16356-01	13 - 14	36X-21711-40	19 - 1		23 - 23	3GX-24711-31	25 - 2
36X-12151-00	4 - 9	5H0-14612-01	9 - 2	5H0-16357-00	13 - 26	36X-2172A-00	19 - 6	3DM-23149-10	23 - 15	36X-24810-00-35	25 - 4
5H0-12156-00	4 - 10	4BE-14613-00	9 - 18	1W1-16358-01	13 - 13	36X-21721-20	19 - 2		23 - 34	36X-24810-00-98	25 - 4
2NX-12159-00	4 - 13	36X-14628-01	9 - 3	36X-16371-00	13 - 7	36X-21721-40	19 - 2	4A1-23156-00	23 - 3	36X-24860-00-35	25 - 10
36X-12171-00	5 - 1	36X-14711-01	9 - 7	15A-16380-00	13 - 22	3GX-2173E-10	19 - 9		23 - 22	36X-24860-00-98	25 - 10
5H0-12176-00	5 - 2	3YF-14714-00	9 - 15	1KH-16383-00	13 - 19	3GX-2173E-30	19 - 9	509-23158-L0	23 - 9	36X-24861-00	25 - 12
3GC-12210-10	5 - 10	36X-14728-00	9 - 8	24W-17121-00	14 - 7	3GX-2173F-10	19 - 10		23 - 28	36X-24862-00	25 - 11

NUMERICAL INDEX
INDICE NUMERICO

PART NO. CODIGO NO.	REF. NO.	PART NO. CODIGO NO.	REF. NO.	PART NO. CODIGO NO.	REF. NO.	PART NO. CODIGO NO.	REF. NO.	PART NO. CODIGO NO.	REF. NO.	PART NO. CODIGO NO.	REF. NO.
3V6-25104-00	26 - 23	1E6-26372-00	28 - 20	2W0-83520-00	32 - 2	90116-08425	27 - 19	90201-10508	3 - 29	90430-06014	1 - 5
248-25111-00-35	26 - 1	36X-26372-00	28 - 17	355-83524-00	32 - 7	90119-06063	18 - 3	90201-10591	5 - 5		5 - 20
2K5-25118-00	26 - 30	36X-27211-00-90	29 - 1	355-83526-00	32 - 6		18 - 14	90201-10644	12 - 23		10 - 10
23F-25121-00-35	26 - 6	36X-27231-00	29 - 4	36X-83550-00	32 - 9		25 - 3	90201-12588	5 - 18	90430-08119	13 - 23
36X-25135-00	26 - 9	36X-27311-01	29 - 22	4GY-83912-00	35 - 2	90119-06074	20 - 21		16 - 5	90430-10148	36 - 13
109-25136-00	26 - 10	36X-27311-11	29 - 23	23X-83922-00	35 - 13	90119-06097	18 - 10	90201-12749	26 - 33	90430-14131	1 - 8
102-25137-00	26 - 35	36X-27410-00-90	29 - 12	3TB-83936-00	36 - 28	90122-06012	7 - 15	90201-17257	14 - 19	90445-08171	36 - 3
36X-25138-00	26 - 11	36X-27420-00-90	29 - 16	437-83936-01	35 - 24	90123-08046	28 - 18	90201-173F4	12 - 11	90445-10638	24 - 14
183-25149-00	26 - 15	36X-28100-00	25 - 13	437-83936-11	36 - 27		28 - 21	90201-175F6	12 - 7	90460-56105	7 - 20
558-25155-00	26 - 17	36X-2811G-00	25 - 9	5Y1-83941-00	35 - 7	90149-06011	24 - 12	90201-201E4	3 - 12	90464-13249	18 - 15
3V6-25304-00	27 - 23	36X-81410-M0	30 - 2	5Y1-83942-00	35 - 8	90149-08067	13 - 24	90201-20269	26 - 14	90465-08020	10 - 13
391-25311-00-35	27 - 1	18A-81960-60	36 - 21	36X-83965-00	35 - 11	90151-06013	15 - 7	90201-203E7	14 - 21	90465-08188	11 - 10
109-25315-00	26 - 4	558-82110-12	36 - 1	36X-83972-01	35 - 19	90152-06010	12 - 19	90202-05193	24 - 13	90465-16187	11 - 12
183-25315-00	27 - 3	36X-82122-00	36 - 6	18G-83976-00	35 - 22	90153-06029	1 - 4	90206-06090	9 - 6	90467-09006	24 - 15
248-25321-00-35	27 - 8	36X-82131-00	36 - 2	3M7-84110-00	33 - 1	90157-05027	35 - 23		9 - 11	90467-10035	7 - 2
36X-25327-00	27 - 22	55K-82150-01	36 - 4	317-84112-30	33 - 5	90159-05011	13 - 12	90209-10131	35 - 10	90467-14015	10 - 12
23F-2533A-00	26 - 22	116-82151-00	36 - 5	248-84114-00	33 - 4	90159-06085	18 - 6	90209-16209	14 - 3	90468-06134	20 - 36
579-2533A-00	27 - 14	3KJ-82310-10	36 - 7	276-84120-00	33 - 3	90170-06128	4 - 14	90209-17226	12 - 9	90468-26122	12 - 2
248-25351-10	27 - 11	55X-82370-00	36 - 10	3M7-84130-00	33 - 7	90170-08258	27 - 21	90209-18208	14 - 16	90480-01141	19 - 5
3Y6-25351-00	26 - 20	36X-82510-02	36 - 24	202-84315-00	33 - 2	90170-10038	28 - 7	90214-17028	12 - 13	90480-12320	19 - 3
4V8-25355-00	27 - 12	2F1-82530-02	36 - 14	195-84324-00	33 - 6	90170-14284	3 - 27	90214-20023	3 - 17	90480-14229	17 - 19
36X-25364-00	27 - 7	4KM-82540-00	36 - 12	36X-84510-00	34 - 1		13 - 4	90215-06184	1 - 22	90501-07629	3 - 19
31G-25366-00	27 - 15	36X-82590-01	36 - 15	122-84514-30	34 - 4		13 - 21	90215-08160	27 - 20	90501-10245	29 - 9
3V6-25371-00	27 - 31	5Y1-82911-01	35 - 1	1Y1-84521-00	34 - 2	90170-20224	27 - 39	90215-14186	13 - 20	90501-12081	12 - 17
2K6-25381-00	27 - 40	361-82921-31	35 - 14	36X-84527-00	34 - 5	90171-10004	26 - 31	90215-14205	3 - 26	90501-12792	26 - 37
353-25381-00	26 - 28	36X-83310-10	31 - 1	12V-85540-10	36 - 18	90171-14020	27 - 41		13 - 3	90501-18576	6 - 7
36X-25386-00	27 - 37	185-83311-10	31 - 4	36X-85550-M0	30 - 1	90175-06013	29 - 11	90240-06076	29 - 5	90501-21133	3 - 14
36X-25387-00	27 - 38		31 - 12	15A-85580-M0	30 - 3	90179-08148	28 - 19	90240-07083	3 - 18	90501-23700	13 - 11
3V6-25388-00	27 - 44		31 - 20	90101-06278	26 - 18		28 - 22	90240-12092	21 - 9	90506-08227	16 - 2
3V6-25389-00	27 - 45		31 - 25	90101-06291	27 - 13	90179-25033	22 - 13	90249-12008	29 - 10	90506-14343	29 - 8
1T2-25394-00	27 - 28	36X-83312-00	31 - 2	90101-10188	3 - 30	90185-08089	17 - 6	90280-05013	3 - 28	90506-15260	26 - 8
15A-25454-10	27 - 18		31 - 10	90101-10303	5 - 4		17 - 10	90282-05013	3 - 25		27 - 10
36X-26111-01	28 - 1		31 - 18	90105-065A1	6 - 16		17 - 14	90282-05043	13 - 2	90506-28100	29 - 24
36X-26111-11	28 - 1		31 - 23	90105-08066	17 - 11	90185-10037	29 - 26	90340-14068	11 - 6	90508-14620	12 - 26
36X-26123-01	28 - 15	36X-83318-00	31 - 6	90105-08141	9 - 20	90185-10091	22 - 23	90340-32116	11 - 8	90508-16428	5 - 16
36X-26123-11	28 - 15	36X-83320-10	31 - 9		25 - 6	90185-12072	20 - 11	90380-12051	21 - 3	90508-18537	13 - 25
3V6-26241-00	28 - 5	36X-83321-00	31 - 5	90105-08195	1 - 9	90201-05032	20 - 34	90386-14103	13 - 28	90508-20023	29 - 13
3V6-26242-00	28 - 2		31 - 13	90105-10058	29 - 21	90201-054K4	34 - 7	90386-18028	20 - 3		29 - 17
434-26243-00	28 - 3		31 - 21	90105-14102	22 - 14	90201-06557	18 - 8	90387-051K7	7 - 16	90508-26538	12 - 5
1M1-26249-01	28 - 4		31 - 26	90109-06418	5 - 19	90201-07076	26 - 13	90387-05563	34 - 6	90508-26539	15 - 9
1Y1-26290-50	28 - 13	36X-83328-00	31 - 14	90109-06419	6 - 13	90201-08326	9 - 21	90387-062V8	18 - 2	90508-29540	16 - 3
1Y1-26290-60	28 - 14		31 - 17	90109-06799	35 - 3		25 - 7	90387-06681	20 - 31	90560-12138	26 - 3
36X-26311-01	28 - 6	36X-83340-10	31 - 22		35 - 17	90201-08366	17 - 5	90387-067V1	32 - 4	90560-15136	27 - 2
36X-26331-00	28 - 11	36X-83350-10	36 - 11	90109-08063	27 - 32		17 - 9	90387-12265	26 - 29	91317-06018	1 - 18
1RH-26335-00	28 - 8	36X-83371-11	36 - 16	90109-08368	27 - 33		17 - 13	90387-125F1	10 - 4	91317-06020	7 - 5
5Y1-26339-00	28 - 12	3HA-83510-00	32 - 1	90109-10473	29 - 25	90201-08609	1 - 10		10 - 5		9 - 19
36X-26341-01	28 - 10	1M3-83513-00	32 - 5	90109-10554	21 - 5	90201-10126	21 - 6	90387-155J5	27 - 43	91317-06025	5 - 12
1E6-26342-00	28 - 9	4N0-83516-00	32 - 3	90110-06064	1 - 19	90201-10135	12 - 25	90387-255F3	5 - 6	91317-06030	2 - 6

NUMERICAL INDEX
INDICE NUMERICO

PART NO. CODIGO NO.	REF. NO.	PART NO. CODIGO NO.	REF. NO.	PART NO. CODIGO NO.	REF. NO.	PART NO. CODIGO NO.	REF. NO.	PART NO. CODIGO NO.	REF. NO.	PART NO. CODIGO NO.	REF. NO.
91317-08025	9 - 16	93102-20004	14 - 23	93608-50158	16 - 6	95807-08016	28 - 16	98507-06016	31 - 15		
91317-08045	1 - 11	93102-47297	26 - 21	93700-06004	20 - 4	95817-08012	25 - 5	98507-06020	1 - 14		
91401-20012	27 - 36	93104-07003	26 - 12	93700-06009	20 - 5	95817-08050	17 - 8		30 - 8		
	29 - 7	93104-22018	27 - 5	93822-14043	14 - 25	95817-08065	17 - 3	98507-06035	35 - 9		
91401-20020	26 - 32	93106-26005	27 - 17	94130-195E9	26 - 24	95817-08070	17 - 4	98507-06045	20 - 14		
91401-25015	29 - 15	93109-18020	20 - 9	94141-185E8	27 - 24	95827-08035	22 - 25	98511-03045	34 - 3		
	29 - 19	93210-07135	6 - 14	94227-19292	26 - 25	95827-08090	20 - 29	98707-06030	6 - 5		
91401-25020	21 - 11	93210-09165	4 - 12	94232-18113	27 - 25	95827-08120	17 - 12	98907-06010	9 - 5		
91401-30030	27 - 42	93210-13361	2 - 4	94325-18081	27 - 26	95827-10060	22 - 22		9 - 10		
91701-08038	29 - 14	93210-14104	26 - 36	94327-19111	26 - 26	95827-12025	29 - 20	99001-10600	16 - 4		
	29 - 18	93210-14369	11 - 7	94416-19002	26 - 27	97007-05012	36 - 22	99009-10400	12 - 22		
92902-04100	8 - 29	93210-19123	11 - 22	94418-18008	27 - 27	97007-05020	34 - 8	99009-17400	12 - 6		
92907-05100	30 - 5	93210-32172	11 - 9	94580-41104	5 - 7	97007-06012	1 - 21		12 - 14		
	30 - 7	93210-347A1	6 - 9	94580-88122	27 - 29	97007-06016	36 - 19		14 - 20		
92907-05600	7 - 19	93210-35537	7 - 4	94680-88001	27 - 30	97007-06020	29 - 2	99009-20400	26 - 16		
	22 - 19	93210-42101	27 - 6	94701-00157	1 - 23		36 - 8	99530-12016	10 - 2		
	34 - 9	93210-48364	13 - 15	94701-00181	1 - 23	97007-06022	35 - 5		11 - 3		
	36 - 23	93210-54175	6 - 12	95027-06025	6 - 15		35 - 15		11 - 17		
	36 - 26	93210-57634	1 - 17		11 - 4	97007-08025	33 - 9	99530-14016	1 - 7		
92907-06100	35 - 6	93210-72529	2 - 2		11 - 14	97027-06010	14 - 27		2 - 5		
	35 - 16	93211-05471	1 - 13		11 - 18	97027-06016	5 - 13				
	36 - 20	93306-00406	27 - 16	95027-06030	10 - 6	97027-06020	16 - 10				
92907-06200	13 - 16	93306-20201	14 - 10	95027-06035	11 - 5	97027-08030	12 - 20				
	29 - 6	93306-20227	27 - 4		11 - 19	97706-30108	31 - 3				
	35 - 12	93306-20332	14 - 24	95027-06040	10 - 7		31 - 11				
92907-06600	5 - 14	93306-20401	14 - 8	95027-06045	11 - 20		31 - 19				
	9 - 14	93306-30103	26 - 2	95027-06080	10 - 8		31 - 24				
	12 - 28	93306-30424	14 - 22	95027-06085	10 - 9	97707-50512	20 - 33				
	19 - 8	93306-30427	3 - 23	95307-05600	22 - 20	97801-03008	24 - 9				
	20 - 15		3 - 24	95307-06600	13 - 17	97802-04006	8 - 19				
	20 - 18	93306-30611	3 - 7		26 - 19	97802-05008	8 - 24				
	22 - 6	93310-530J3	3 - 5		32 - 8	98502-04014	8 - 28				
	31 - 8	93315-23607	15 - 3	95307-06700	18 - 7	98506-05025	35 - 20				
	31 - 16	93410-20038	14 - 4		29 - 3	98506-05030	35 - 21				
	36 - 9	93410-22039	14 - 17	95307-08700	27 - 35	98507-04030	20 - 26				
92907-08100	27 - 34	93420-28055	13 - 30	95317-06700	12 - 29	98507-05008	20 - 24				
	33 - 10	93440-10085	1 - 3	95607-06100	35 - 4	98507-05012	33 - 8				
92907-08600	9 - 17	93450-17044	3 - 11		35 - 18		36 - 25				
	33 - 11	93501-04011	22 - 8	95607-06200	20 - 16	98507-05016	7 - 18				
92907-10200	26 - 34	93503-16003	22 - 11	95607-10100	21 - 7		22 - 18				
92907-12600	21 - 10	93505-16006	13 - 27	95707-08500	33 - 12	98507-05025	30 - 6				
93101-15101	14 - 9	93507-32009	12 - 18	95807-06008	17 - 18	98507-05030	30 - 4				
93102-10207	12 - 24	93602-13177	3 - 20	95807-06012	22 - 16	98507-06010	9 - 13				
93102-12106	5 - 17	93603-12030	6 - 3		36 - 17		11 - 11				
	16 - 7	93604-10011	5 - 3	95807-06016	7 - 21	98507-06012	19 - 7				
93102-14209	13 - 29	93604-16092	15 - 5		20 - 32		22 - 5				
93102-17263	12 - 10	93604-20156	15 - 6		24 - 6	98507-06016	20 - 17				
93102-18008	26 - 5	93605-10090	3 - 15	95807-08012	20 - 28		31 - 7				